

Uniform Mélange

cat. Maxi

68% wool - 22% polyamide - 10% polyester
Flame retardant - 80.000 Martindale



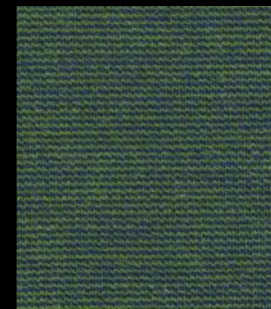
aloë



oase



cyan



peacock



cactus



ice



jeans



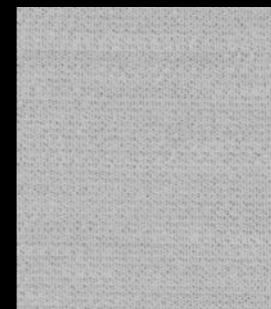
sea



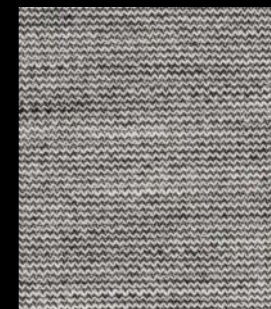
hydro



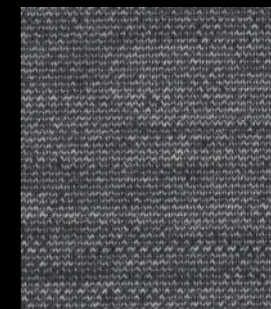
ink



smoke



ash



stone



chalk



charcoal



shell



clay



café



sunset



autumn



solar



copper



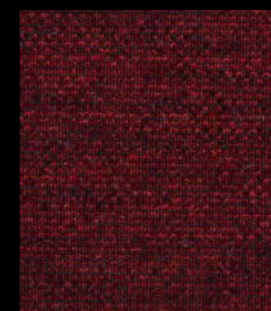
oil



coral



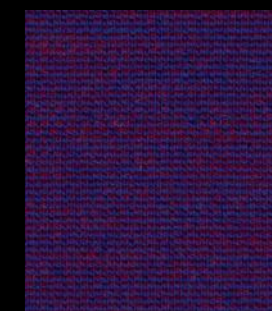
rumba



tango



violet



blueberry

Uniform Mélange

Technical details

Composition	68% wool - 22% polyamide - 10% polyester
Weight	Gr./m ² 490
Abrasion test	Martindale - ISO 12947-2: 80.000 rubs
Lightfastness	ISO 105-B02: 6
Pilling	ISO 12945-2: 4
Fastness to rubbing	ISO 105-X12: Wet 4/5 Dry 4/5
Flame retardant	EN 1021-1/2 cigarette & match BS 5852 part 1 cigarette & match DIN 4102-B2 surface ignition US Cal. Tech. Bull. 117 IMO FTP Code part 8
Features	Stretch material
Environment	Oeko-Tex 100 certified Ecologically produced in Europe