



# Xtreme

cat. A

100% post-consumer recycled polyester  
Flame retardant - 100.000 Martindale



Aruba YS108



Sandstorm YS071



Nougat YS091



Sombrero YS046



Solano YS072



Tortuga YS168



Lobster YS076



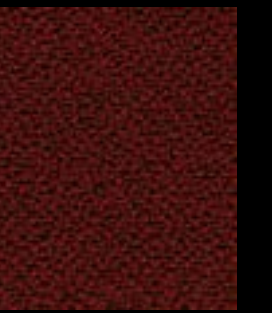
Tokara YS136



Belize YS105



Panama YS079



Tobago YS030



Bridgetown YS102



Diablo YS101



Tarot YS084



Parasol YS073



Bluebell YS097



Honeymoon YS035



Ocean YS100



Cayman YS024



Steel YS095



Martinique YS004



Scuba YS082



Curacao YS005



Costa YS026



Campeche YS074



Lombok YS159



Tonga YS160



Windjammer YS047



Madura YS156



Apple YS096



Appledore YS077



Taboo YS045



Krabi YS141



Blizzard YS081



Bonaire YS172



Adobo YS165



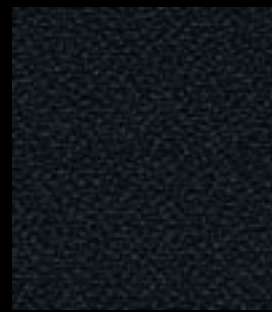
Rum YS173



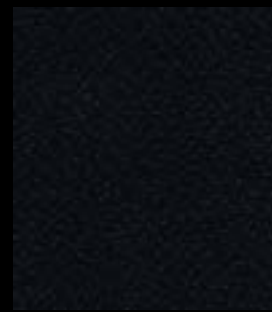
Slip YS094



Osumi YS171



Padang YS145



Havana YS009



Xtreme

eco-sustainable

## Technical details

Composition	100% post-consumer recycled polyester
Weight	Gr./m <sup>2</sup> 310
Abrasion test	Martindale - ISO 12947-2: 100.000 rubs
Lightfastness	ISO 105-B02: 6
Fastness to rubbing	ISO 105-X12: Wet 4 / Dry 4
Flame retardant	EN 1021 - 1&2 Cigarette & Match BS 7176 Low Hazard BS 5852 Ignition Source 5 BS 7176 Medium Hazard DIN 4102 B1 NF D 60-013 ÖNORM B 3825 & A 3800-1 (over 58 kg/m <sup>3</sup> CMHR foam) BS 476 Part 7 Class 1 UNI 9175 Classe 1IM BS 476 Part 7 Class 1 (Adhered)
Environment	CERTIFIED TO THE EU ECOLABEL CERTIFIED TO OEKO-TEX® STANDARD 100 CERTIFIED TO THE ADVANTAGE™ "GOLD" MADE 100% RECYCLED POLYESTER NON METALLIC DYESTUFFS



150

650

750

3150

4050

250

3550

1150

350

850



3750

3850

550

950

1250

2650

2550

1050

1350

1550



1650

3250

3350

3450

1750

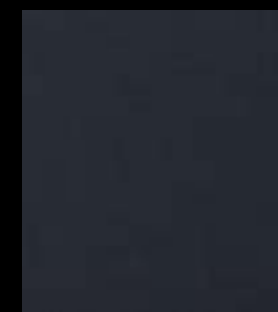
3650

1850

2150

3950

2050



1950

2250

1450

450

2950

2350

2750

2850

3050

2450

# Tailor

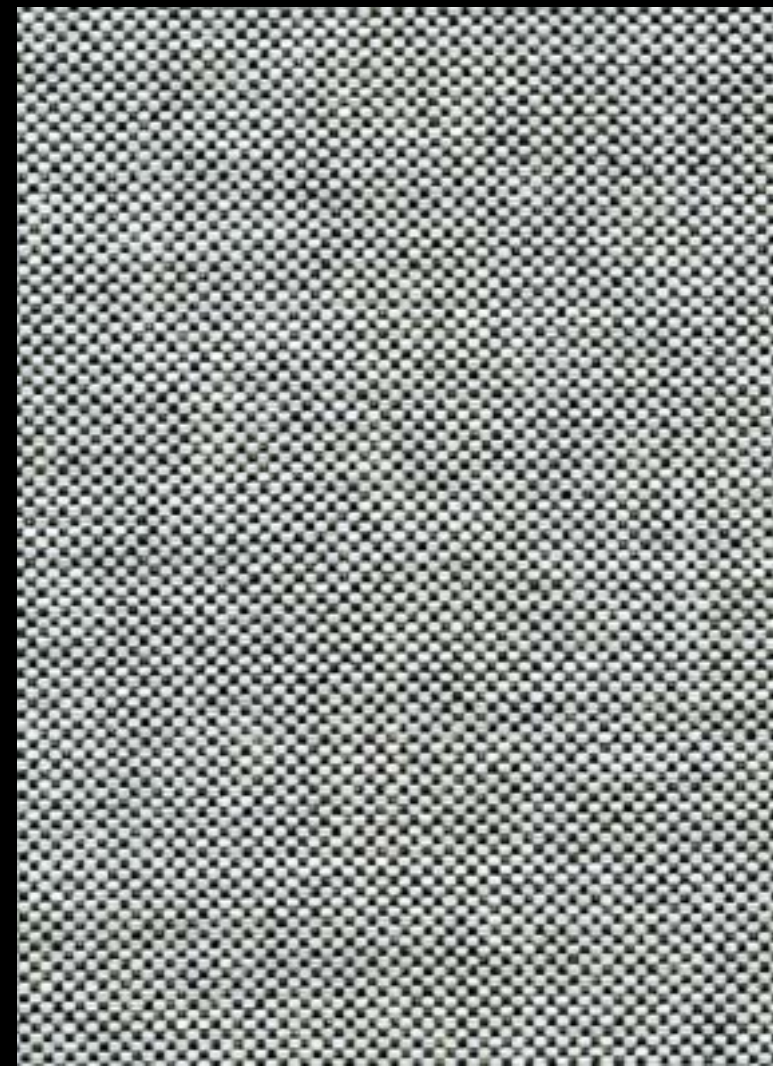
cat. A

100% PES

Flame retardant - 100.000 Martindale







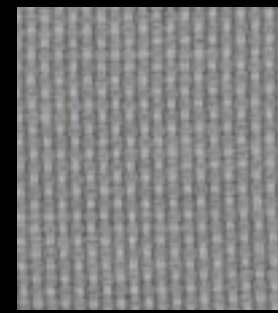
# Angel

cat. A

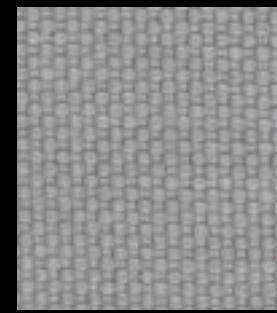
100% polypropylene  
Flame retardant - 100.000 Martindale



111



101



600



601



201



407



203



200



102



401



400



402



403



404



406



405



801



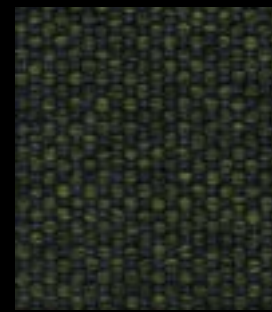
800



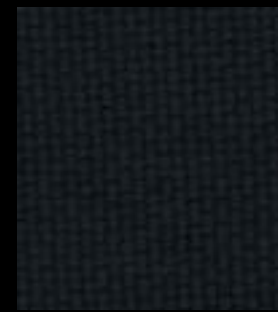
803



802



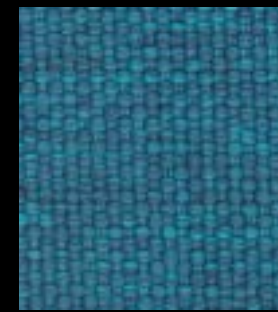
703



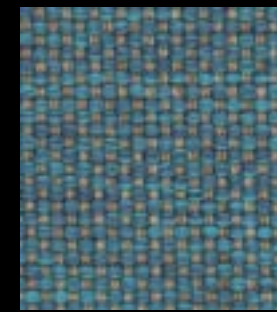
702



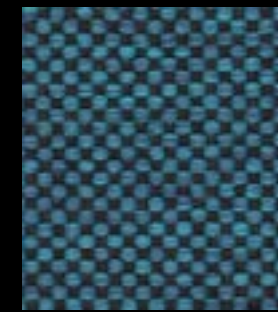
701



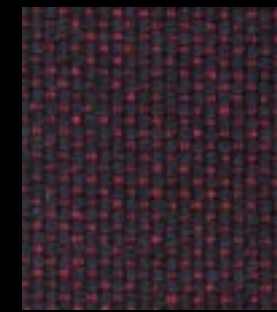
700



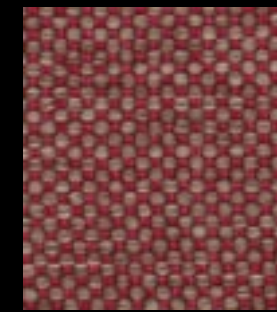
706



705



707



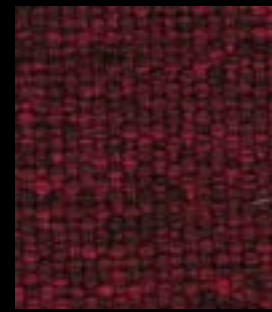
302



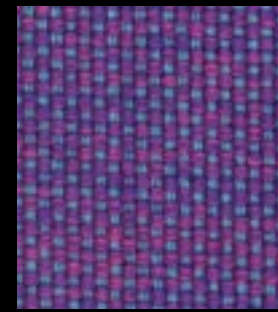
303



305



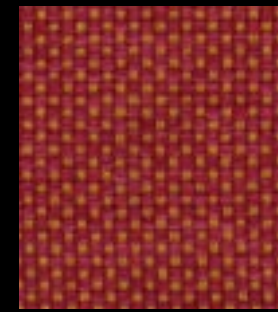
306



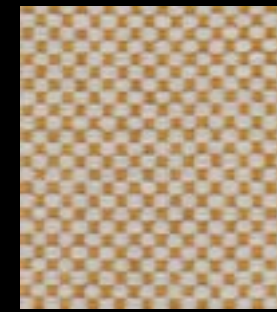
901



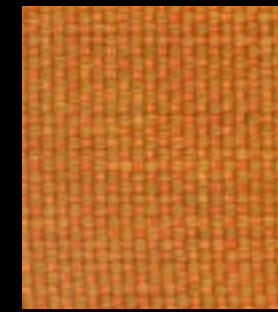
300



304



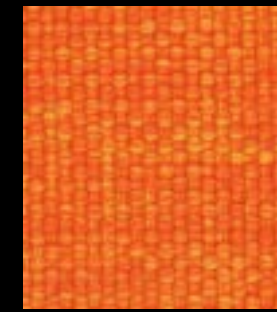
501



310



500



307



308



503









# Samar

cat. A

100% polyester FR  
Flame retardant - 50.000 Martindale



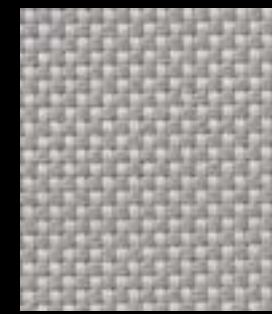
7052.04



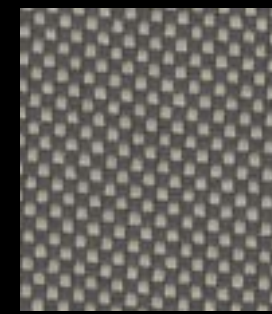
7052.24



7052.25



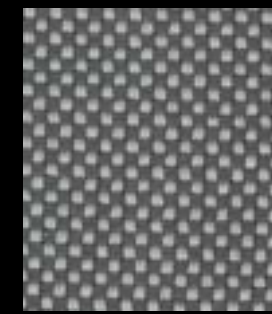
7052.14



7052.13



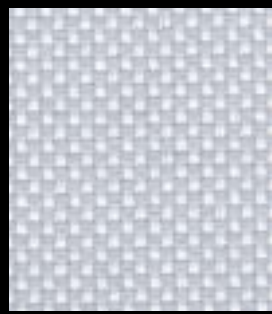
7052.27



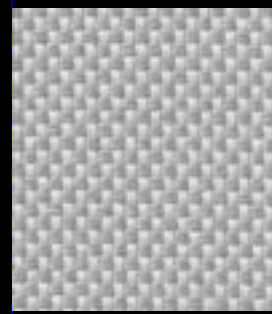
7052.17



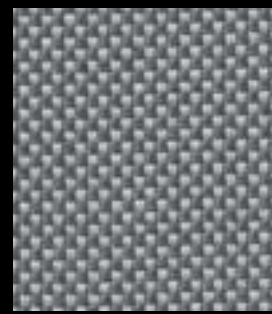
7052.16



7052.36



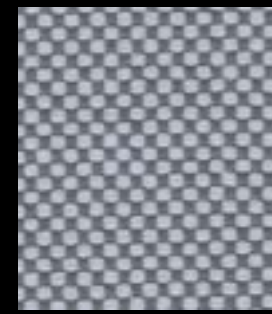
7052.35



7052.37



7052.40



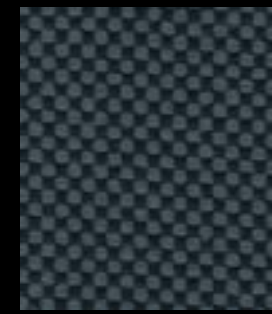
7052.39



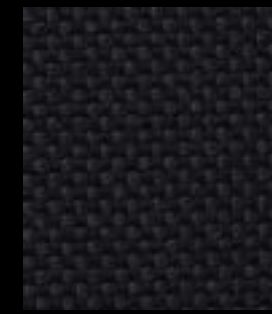
7052.38



7052.31



7052.47



7052.42



7052.50



7052.49



7052.41



7052.01



7052.46



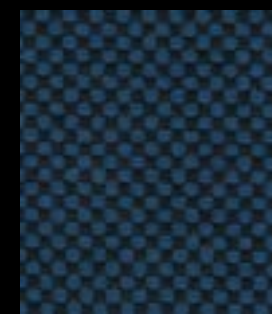
7052.02



7052.05



7052.43



7052.44



7052.51



7052.48



7052.08



7052.10



7052.21



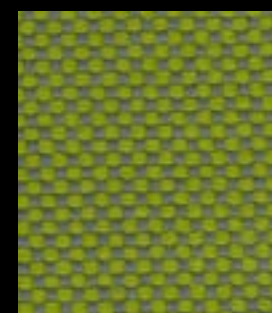
7052.07



7052.18



7052.09



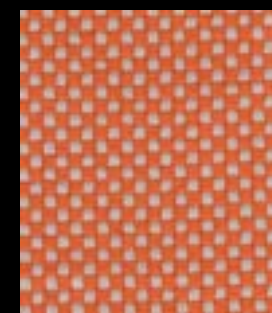
7052.12



7052.11



7052.34



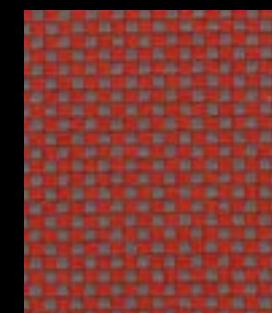
7052.19



7052.22



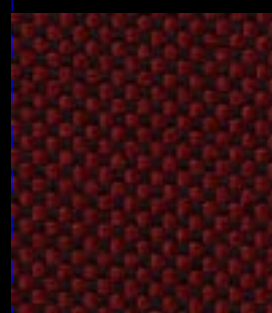
7052.23



7052.29



7052.26



7052.30



7052.33





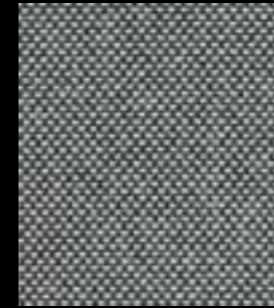




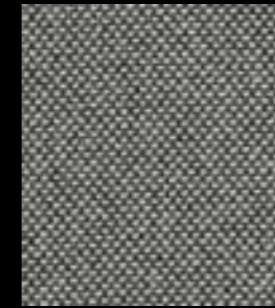
Avon

cat. A

100% recycled polyester FR  
Flame retardant - 80.000 Martindale



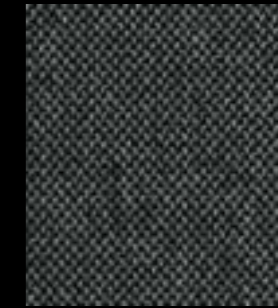
7068.06



7068.05



7068.04



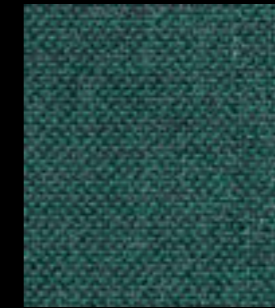
7068.07



7068.08



7068.09



7068.10



7068.11



7068.12



7068.13



7068.14



7068.01



7068.02



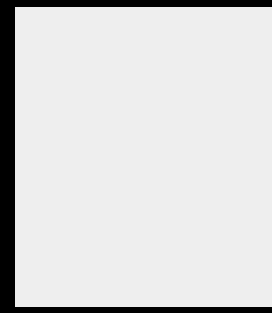
7068.03



## Technical details

Composition	100% recycled polyester FR
Weight	Gr./ml. 531
Abrasion test	Martindale - ISO 12947-2: 80.000 rubs
Lightfastness	ISO 105-B02: 6
Pilling	ISO 105-B02: 4/5
Flame retardant	EN 1021/ 1-2 BS 5852, crib 5 NF D 60-013 (AM 18) DIN 4102, B1 UNI 9175, classe 1.IM Cal TB 117 NFPA 260, class 1 IMO 2010 FTP part 8
Environment	CERTIFIED TO OEKO-TEX® STANDARD 100





111



100



105



101



102



103



407



401



400



606



404



402



403



405



406



005



006



508



500



501



503



604



603



600



601



602



607



810



703



001



707



701



708



804



802



803



805



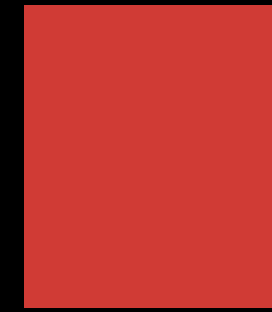
806



808



300



310



304



302



307

# Magnum

cat. A

88% pvc, 7% polyester, 4% cotton,  
1% polyurethane/polycarbonate  
Thickness ± 1,10 mm.



Technical details

Composition	88% pvc, 7% polyester, 4% cotton, 1% polyurethane/polycarbonate
Weight	Gr./m <sup>2</sup> 715
Abrasion test	Martindale - ISO 5470-2: 200.000 rubs
Lightfastness	ISO 105-B02: 7
Fastness to rubbing	ISO 105-X12: Wet 5 - Dry 5
Flame retardant	1IM - UNI 9175 EN 1021 1/2 BS 5852 part 1, is 0 and 1 NF P 92 503 M3 NFPA 260 Class 1 California TB 117-2013 IMO 3.20 - FTP Code 307 part 8 ÖNOM B 3825 - schwer brennbar
Features	ANTIMICROBIAL ANTIBACTERIAL STRETCHY NON-TOXIC EXCELLENT SCRATCH AND TEAR-RESISTANCE, PHTHALATE-FREE



1001



1002



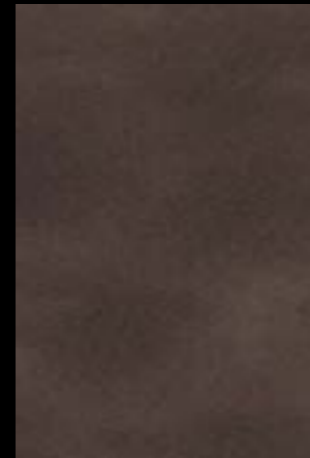
1003



1012



1010



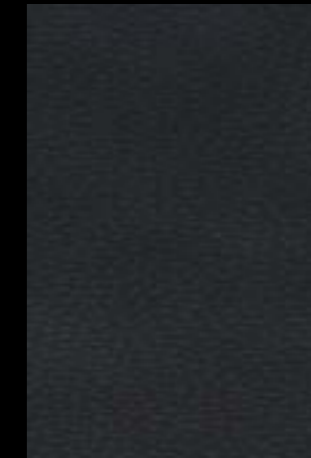
1004



1005



1006



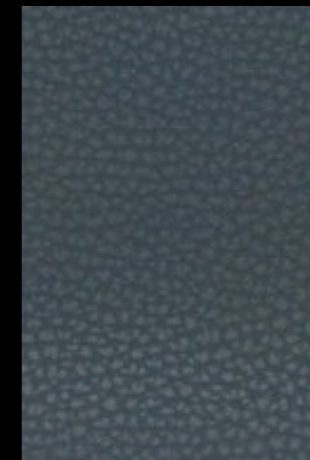
1007



1014



1015



1011



1009

# Crazy

cat. A

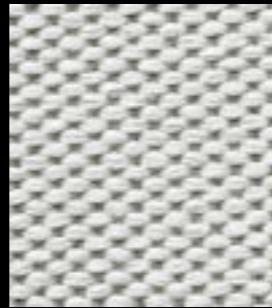
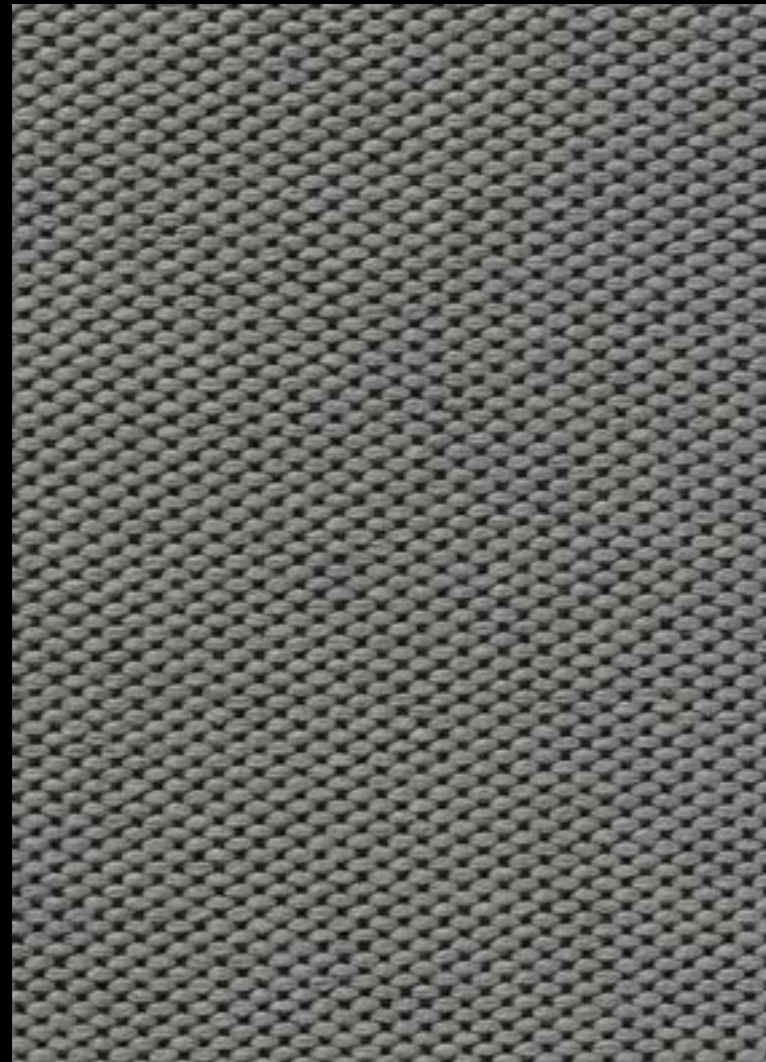
80% PVC - 18% polyester - 2% polyurethane  
Flame retardant - 50.000 Martindale



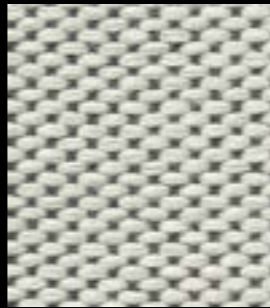
Crazy

## Technical details

Composition	80% PVC - 18% polyester - 2% polyurethane
Weight	Gr./m <sup>2</sup> 600
Abrasion test	Martindale - ISO 5470-2: 50.000 rubs
Fastness to rubbing	ISO 105-X12: Wet 4/5 Dry 4/5
Flame retardant	UNI 9175: classe 1IM EN 1021-2 EN 1021-2 BS 5852-1 cigarette test BS 5852-1 match test
Features	COMFORT AND ELASTICITY TEAR STRENGTH EASY TO CLEAN WATERPROOF PHATALATES FREE FIRE RESISTANCE



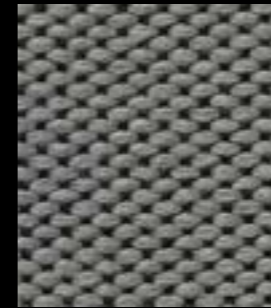
7067.08



7067.06



7067.09



7067.07



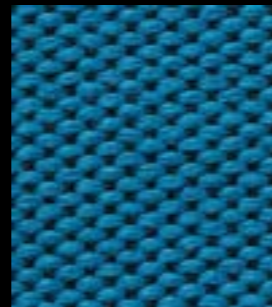
7067.11



7067.10



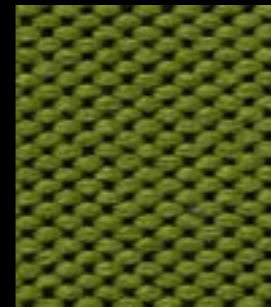
7067.14



7067.15



7067.13



7067.20



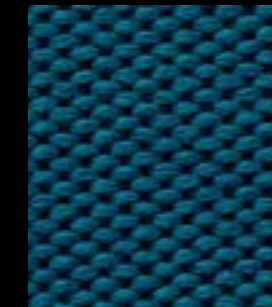
7067.19



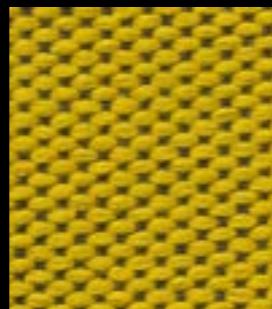
7067.18



7067.17



7067.16



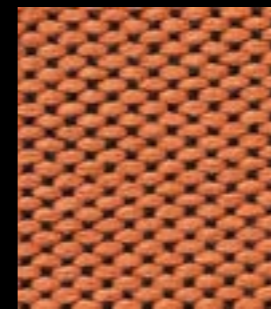
7067.21



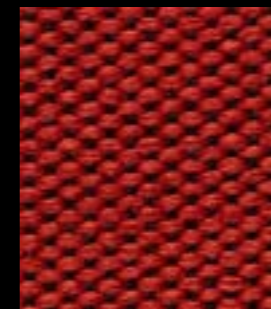
7067.05



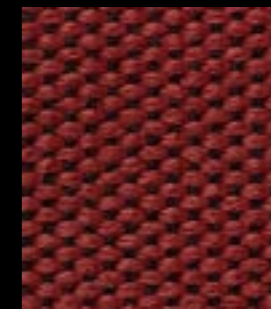
7067.04



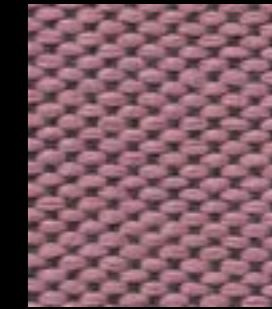
7067.03



7067.01



7067.02



7067.12

# Wilson

cat. B

100% recycled polyester FR  
Flame retardant - 80.000 Martindale



## Technical details

Composition	100% recycled polyester FR
Weight	Gr./ml 771
Abrasion test	Martindale - ISO 12947-2: 80.000 rubs
Lightfastness	ISO 105 B02: 6
Pilling	ISO 12945-2 4-5
Flame retardant	EN 1021/ 1-2 BS 5852 crib 5 NF D 60-013 (AM 18) DIN 4102, B1 UNI 9175, classe 1.IM Cal TB 117 NFPA 260, class 1 IMO 2010 FTP part 8
Environment	CERTIFIED TO OEKO-TEX® STANDARD 100



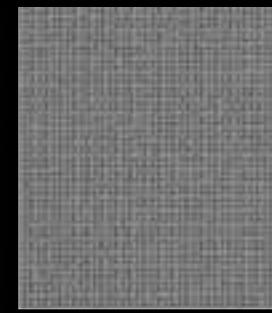
# Fame

cat. B

95% wools of New Zealand - 5% polyamide  
Flame retardant - 200.000 Martindale



60005



60078



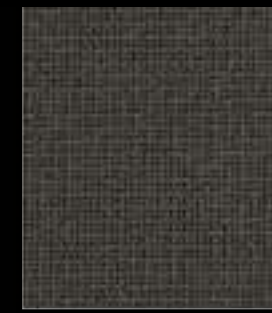
61136



61135



60017



61060



60019



60051



61003



61047



61044



64167



64169



64165



63016



64119



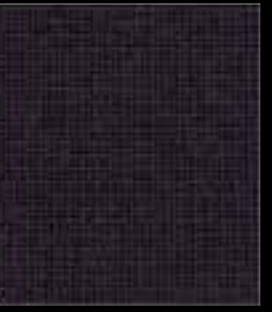
64089



64058



65082



64055



65084



66130



66131



66075



66032



67068



66133



67016



67004



68147



68145



68035



67069



67067



68143



67005



62067



62068



68004



68148



Fame

eco-sustainable

## Technical details

Composition	95% wools of New Zealand - 5% polyamide
Weight	Gr./ml. 630
Abrasion test	Martindale - ISO 12947-2: 200.000 rubs
Lightfastness	ISO 105-B02: 5/7
Pilling	ISO 12945-2: 4
Fastness to rubbing	ISO 105-X12: Wet 4/5 Dry 4/5
Acoustic test air flow resistance	EN 29053 & ISO 9053-1 (airflow resistance)
Acoustic test sound absorption	ISO 354 & ISO 11654 (sound absorption)
Flame retardant	BS EN 1021 1&2 Cigarette and Match BS 5852 Crib 5 CA TB 117-2013 Class Uno UNI 9175 Class 1 I EMME AM 18 - NF D 60-013 BS 5852 Part 1 0,1 Cigarette & Match ÖNORM B 3825-B1-3800-Q1 UK IMO MSC 307(88) Annex 1 part 8 IMO MSC 307(88) Annex 1 part 8 UK MED Certificate IMO BS 476 Part 7, class 1 DIN 4102 B1 (flame retardant) NF P 92-503 M2 (flame retardant) BS 7176 Medium hazard (flame retardant) BS 5852 Crib 5 (flame retardant)
Environment	CERTIFIED TO OEKO-TEX® STANDARD 100 EU ECOLABEL

2023

laCividina

cat. B





# Main Line Flax

cat. B

75% virgin wool - 25% flax  
Flame retardant - 50.000 Martindale



Waterloo MLF21



Bethnal MLF25



Newbury MLF10



Westminster MLF22



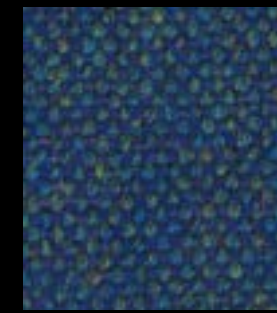
Epping MLF51



Brompton MLF35



Holborn MLF05



Pimlico MLF34



Stanmore MLF37



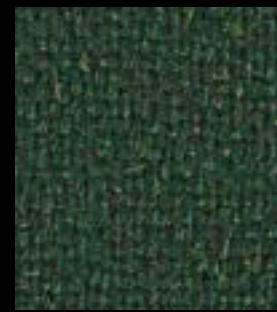
Bayswater MLF24



Greenwich MLF52



Harrow MLF54



Hornchurch MLF55



Hampstead MLF53



Kensington MLF07



Goldhawk MLF31



Greenford MLF32



Monument MLF09



Farringdon MLF29



Tufnell MLF18



Moorgate MLF57



Camden MLF26



Richmond MLF62



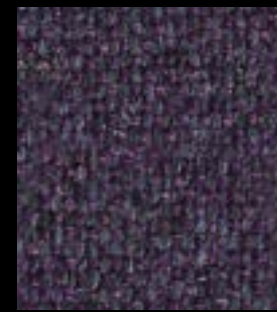
Temple MLF16



Shadwell MLF63



Barbican MLF03



Chigwell MLF48



Embankment MLF50



Tower MLF36



Archway MLF02



Morden MLF12



Lambeth MLF08



Upminster MLF20



Bank MLF23



Tooting MLF17



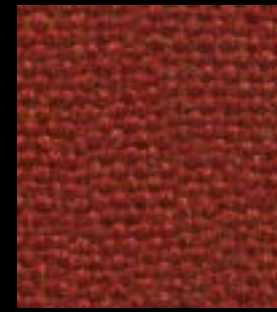
Perivale MLF59



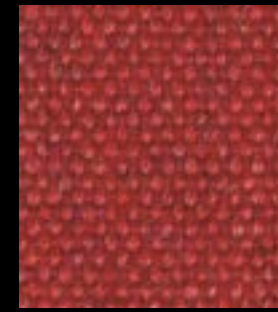
Leyton MLF13



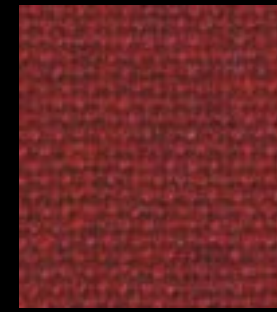
Balham MLF44



Barking MLF45



Aldgate MLF01



Kilburn MLF06



Parsons MLF14



Blackwall MLF46



Northfields MLF40



Stockwell MLF15



Stratford MLF64



Whitechapel MLF66



Edgware MLF28

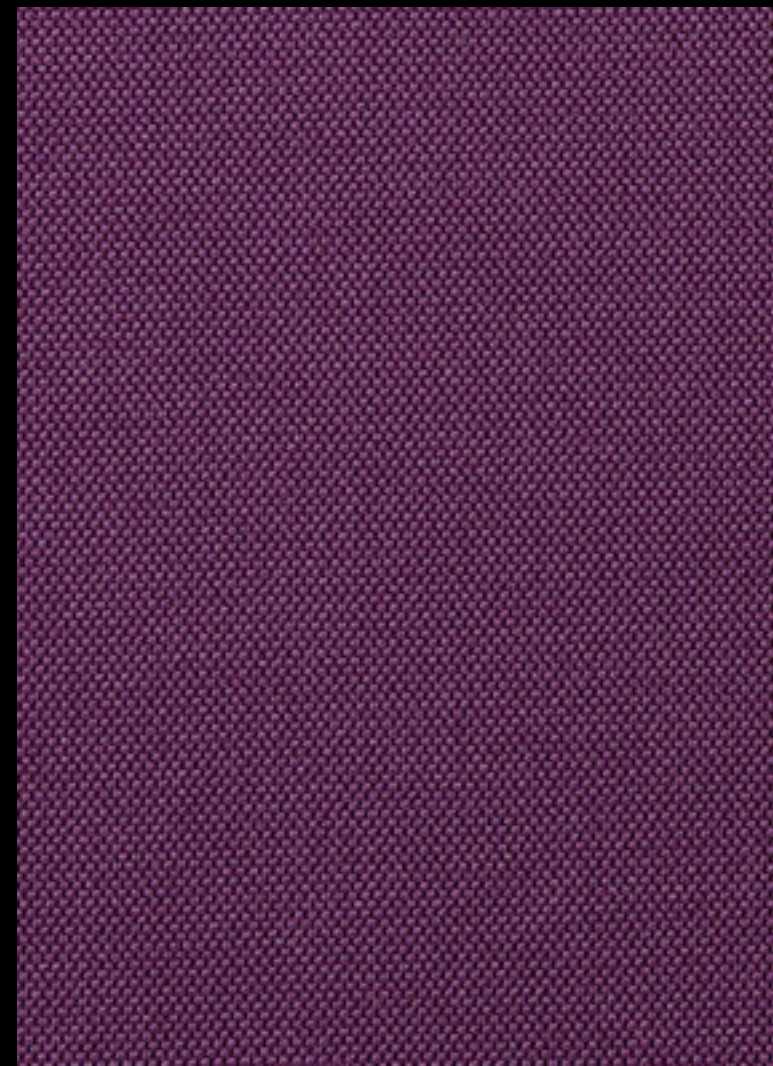


Technical details

Composition	75% virgin wool - 25% flax
Weight	Gr./m <sup>2</sup> 437
Abrasion test	Martindale - ISO 12947-2: 50.000 rubs
Lightfastness	ISO 105-B02: 4-5
Fastness to rubbing	ISO 105-X12: Wet 3 Dry 4
Flame retardant	EN 1021 - 1 (cigarette) EN 1021 - 2 (match) BS 7176 Low Hazard BS 5852 Ignition Source 5 BS 7176 Medium Hazard NF D 60-013 ÖNORM B 3825 & A 3800-1 UNI 9175 Classe 1 IM BS 476 Part 7 Class 1 (Adhered) EN 13501-1 Adhered Class B, s1 ,d0 BS 5867-2: Type B Curtains & Drapes IMO FTP Code (Part 8)

**Environment**  
**CERTIFIED TO THE EU ECOLABEL**  
**CERTIFIED TO INDOOR ADVANTAGE™ GOLD**  
**RAPIDLY RENEWABLE AND COMPOSTABLE**  
**MADE FROM WOOL AND PLANT FIBRE**

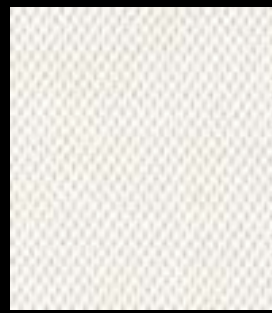




# Stretchy

cat. B

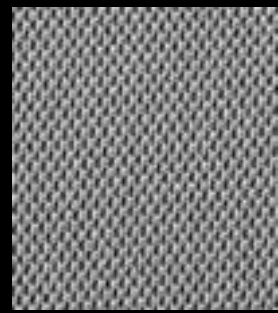
100% PES FR  
Flame retardant - 100.000 Martindale



1



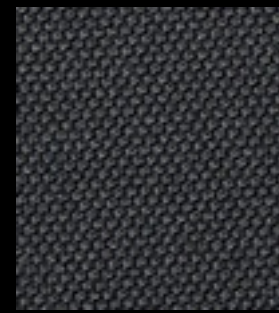
24



12



28



18



23



7



27



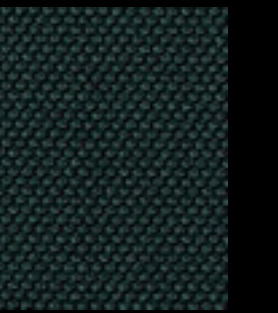
30



13



32



48



42



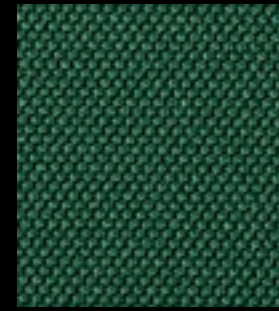
45



6



47



11



5



2



29



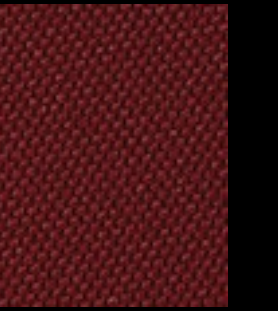
34



35



3



9



8



31



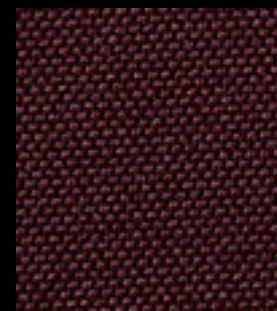
33



36



14



19



25



26



37



38



39



15



4



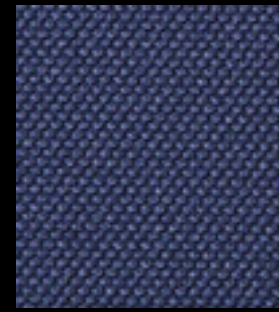
44



43



41



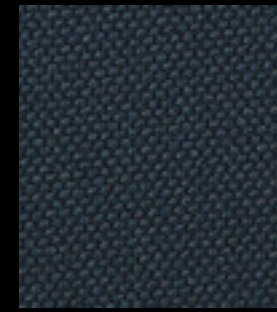
16



20



40



17



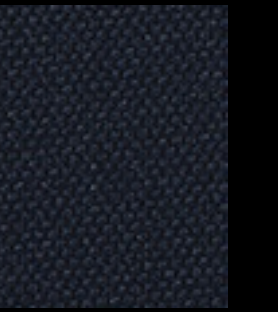
10



21



46



22







111



401



601



602



402



610



901



307



304



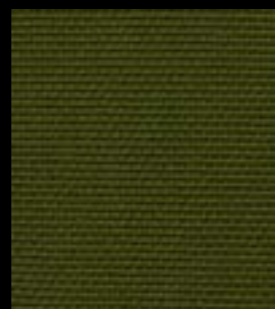
305



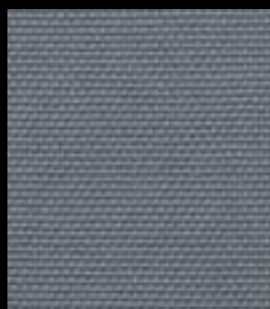
303



501



801



711



701



705



706



200

# Hero

cat. B

100% recycled PET  
Flame retardant - 100.000 Martindale



## Technical details

Composition	100% recycled PET
Weight	Gr./ml. 585
Abrasion test	Martindale - ISO 12947-2: 100.000 rubs
Pilling	ISO 12945-2: 4/5
Fastness to rubbing	ISO 105-X12: Wet 4/5 Dry 4/5
Flame retardant	Classe 1 IM - UNI 9175 EN 1021-1+2 BS5852:2006 cig.+flame California test (Tb117 + AB2998) IMO FTP Code 2010 - part8 BS5852:2006 - Crib-5 NF P 92-504+507:M1 (France)
Environment	CERTIFIED TO OEKO-TEX® STANDARD 100 GLOBAL RECYCLED STANDARD





# Hestan

cat. B

100% polyester FR  
Flame retardant - 60.000 Martindale



7035.11



7035.10



7035.29



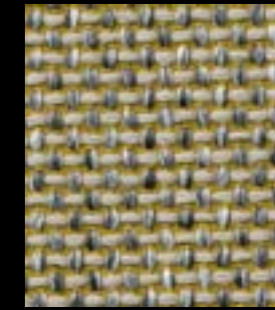
7035.04



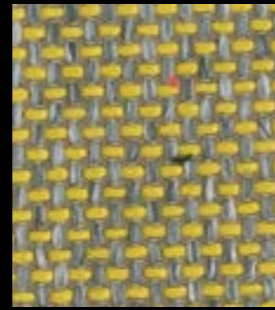
7035.21



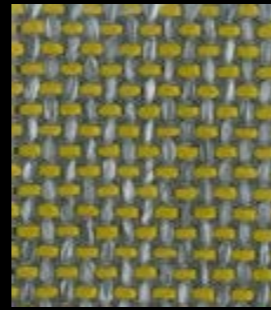
7035.20



7035.01



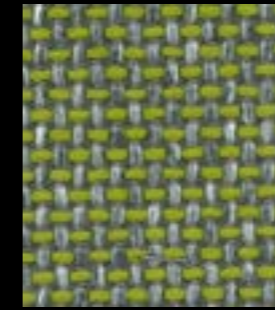
7035.19



7035.17



7035.12



7035.22



7035.13



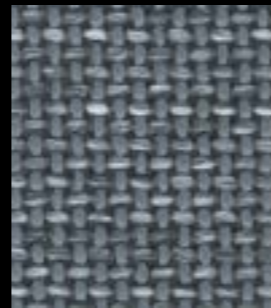
7035.09



7035.18



7035.27



7035.03



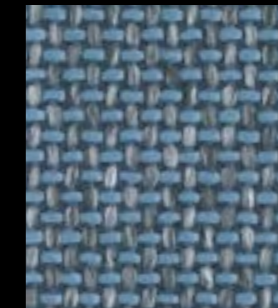
7035.24



7035.02



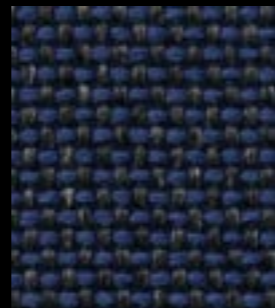
7035.25



7035.28



7035.16



7035.14



7035.15



7035.08



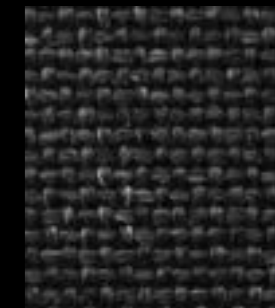
7035.07



7035.05



7035.26



7035.06



## Technical details

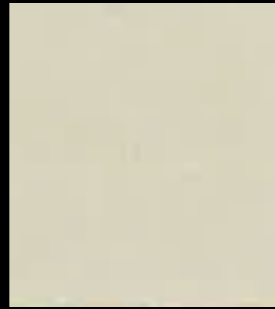
Composition	100% polyester FR
Weight	Gr./ml. 570
Abrasion test	Martindale - ISO 12947-2: 60.000 rubs
Lightfastness	ISO 105-B02: 6/7
Pilling	ISO 12945-2: 4/5 ASTM D3511: 4,5
Fastness to rubbing	ISO 105-X12: Wet 5 Dry 5 AATC 8: Wet 5 Dry 5
Flame retardant	EN 1021/1-2 BS 5852, crib 5 NF P 92/503-507, M1 DIN 4102, B1 IMO 2010 FTP, part 8 UNI 9175, classe 1 Cal TB 117-2013
Environment	CERTIFIED TO OEKO-TEX® STANDARD 100



# Saten

cat. B

65% PU - 35% CO  
Flame retardant - 100.000 Martindale



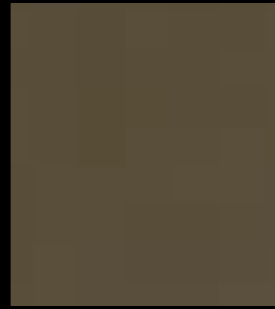
A1066



N1234



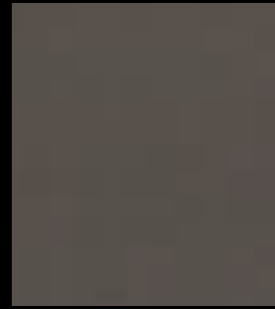
M2554



M1889



N1340



N1341



N1236



M2559



V1451



V1450



V1449



B1712



B1708



B1714



V1455



B1709



B1710



B1711



V1453



V1454



G7779



R2350



R2353



R2351



R2340



R2349



R2354



M2561



# Saten

## Technical details

Composition	65% PU - 35% CO
Weight	Gr./m <sup>2</sup> 510
Abrasion test	Martindale - 12974-1-2/00: 100.000 rubs
Lightfastness	EN ISO 105-B02 4/5 blue scale
Flame retardant	UNI 9175 CLASS 1 IM EN 1021:2014-1-2 BS 5852 PART 0 CIGARETTE TEST BS 5852 PART 1 MATCH TEST BS 5852-2006 SECT 11, IGNITION CRIB 5 IMO Res MSC.307(88)-(2010 FTP Code) Annex 1 part 8 cert nr. MED 0497/802
Feature	ORTHO PHTHALATE FREE



# Silvertex

cat. B

Vinyl Urethane Topcoat and 100% Polyester Hi-Loft2  
Flame retardant - 300.000 Martindale



4004 ice



1077 cream



1051 sisal



13330 beige



0009 taupe



6065 safran



6062 melon



13335 cobre



6061 mandarin



2011 red



2064 wine



13331 mocca



0073 luggage



13341 pistacho



13342 basil



5063 forest



2016 raspberry



4001 plata



12526 tempesta



9002 carbon



13348 black



3066 baltic



3067 delft



3007 sapphire



13332 meteor



5009 sage



0001 macademia

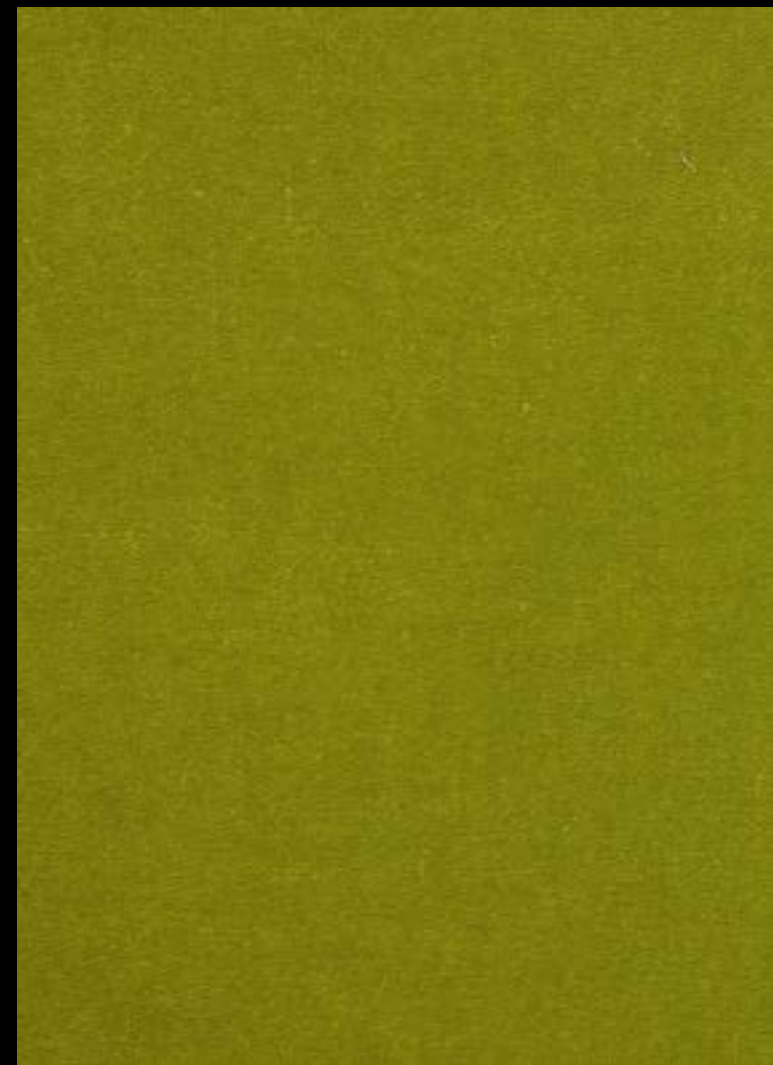


4011 sterling



## Technical details

Composition	Content: 100% Vinyl Urethane Topcoat Backing: 100% Polyester Hi-Loft2
Weight	Gr./m <sup>2</sup> 685
Abrasion test	Martindale - ISO 12947:1999 Part 2: 300.000 rubs
Flame retardant	UNI 9175 (1987) / UNI 9175/FA1 (1994) Classe 1.IM (UNO I EMME) EN 1021 Part 1 & 2 UNE 23.727-90 1R/M.2 NF P 92-503/M2 DIN 4102 B2 ÖNORM B 3825, Gruppe 1 - Schwerbrennbares Verhalten ÖNORM A 3800 Teil 1, Qualmbildungsklasse Q1 - schwachqualmend IMO FTP 2010 Code MSC.307 (88) Part 8 3.1 & 3.2 FMVSS 302 FAR 25/853 (MED) Marine Equipment Directive (in its current valid version) ECE R118 (replaces Directive 95/28/CE) EN 71-2:2006+A1:2007 - Safety of toys - Part 2: Flammability NFPA 260 - Class 1 CAL TB 117-2013, Section E
Finishes and treatments	PERMABLOK3® SILVERGUARD® ANTI-STAIN FINISH ANTI-STATIC FINISH ANTIMYCOTIC PROTECTION ANTIBACTERIAL PROTECTION ANTIFUNGAL PROTECTION



# Superb

cat. C

100% polyester TREVIRA®  
Flame retardant - 100.000 Martindale



5101



5103



5107



5106



5110



5111



5112



5123



5124



5114



5113



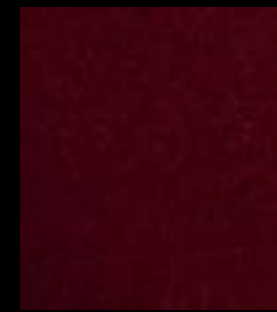
5121



5116



5118



5119



5152



5151



5150



5147



5144



5143



5141



5142



5145



5146



5149



5139



5137



5136



5135



5140



5131



5132



5133



5134



5130



5125



5126



5127



5128



Superb

## Technical details

Composition	100% polyester TREVIRA®
Weight	Gr./m <sup>2</sup> 400
Abrasion test	Martindale - ISO 12947-2: 100.000 rubs
Lightfastness	ISO 105-B02: 5
Pilling	ISO 12945-2: 5
Fastness to rubbing	ISO 105-X12: Wet 4 Dry 4
Flame retardant	UNI 8456 – 9174 classe 1 UNI 9175 classe 1IM EN 1021-1 EN 1021-2 BS 5852 crib 5 DIN 4102 B1 NF P 92 503-507 M1 TB 117:2013 UNI EN 13773:2004 classe 1 NFPA 701:2015 IMO FTP CODE 2010
Features	TEAR STRENGHT SOUND ABSORBING

laCividina

cat. C

2023

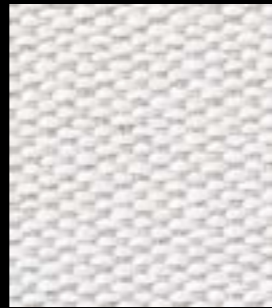




7048.01 P



7048.01 M



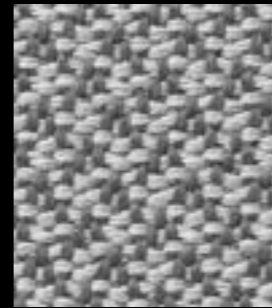
7048.02 P



7048.02 M



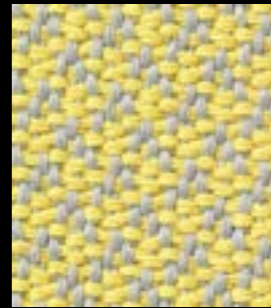
7048.03 P



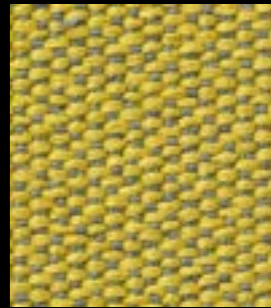
7048.03 M



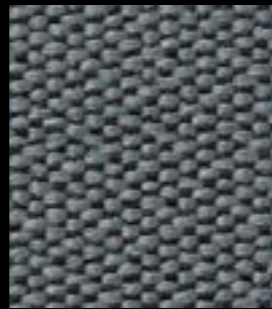
7048.04 P



7048.04 M



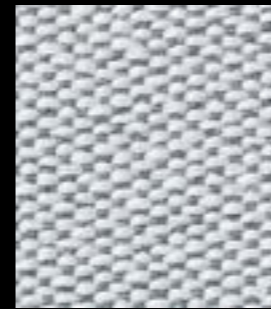
7048.05 P



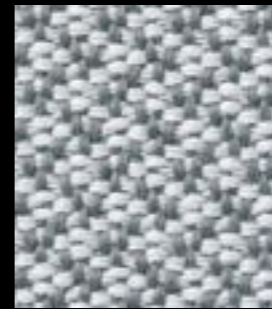
7048.06 P



7048.06 M



7048.07 P



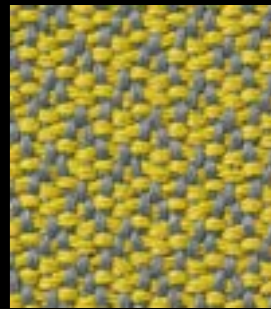
7048.07 M



7048.08 P



7048.08 M



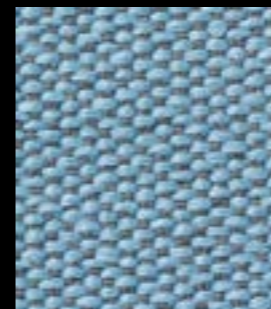
7048.05 M



7048.09 P



7048.09 M



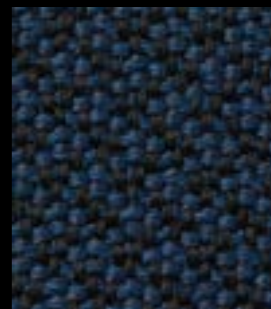
7048.10 P



7048.10 M



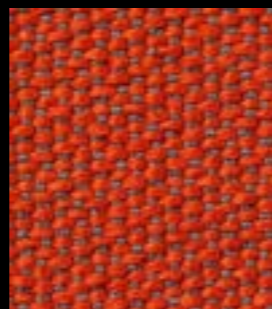
7048.11 P



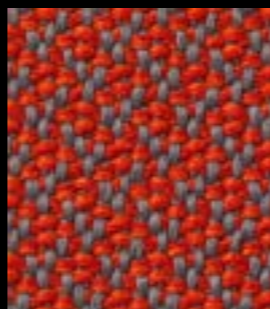
7048.11 M



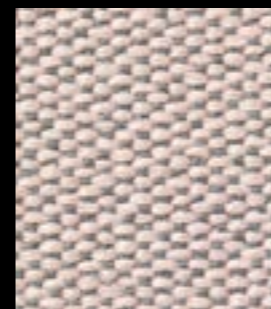
7048.12 P



7048.13 P



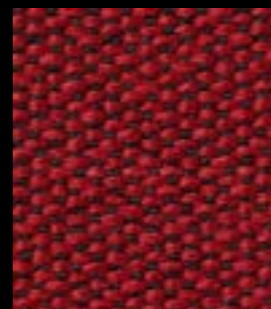
7048.13 M



7048.14 P



7048.14 M



7048.15 P



7048.15 M



7048.12 M

# Deans

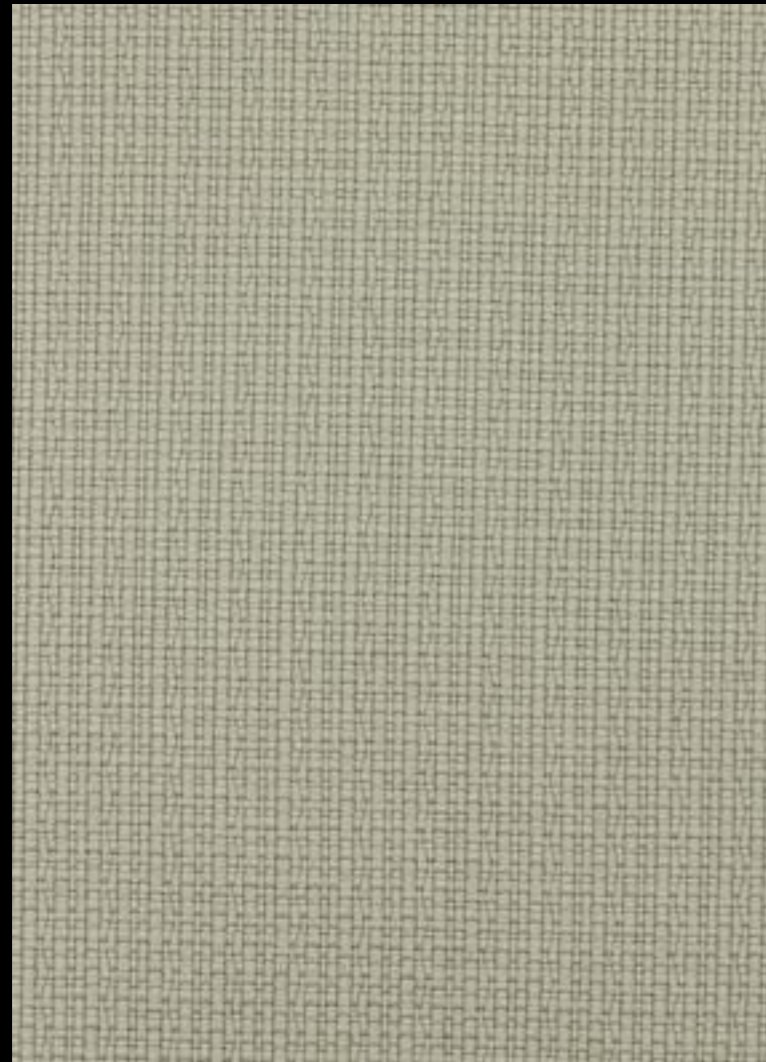
cat. C

100% polyester FR  
Flame retardant - 110.000 Martindale



## Technical details

Composition	100% polyester FR
Weight	Gr./ml. 861
Abrasion test	Martindale - ISO 12947-2: 110.000 rubs
Lightfastness	ISO 105-B02: 6/7
Pilling	ISO 12945-2: 4 ASTM D3511: 3
Fastness to rubbing	ISO 105-X12: Wet 4-5 Dry 4-5 AATC 8: Wet 5 Dry 5
Flame retardant	EN 1021/1-2 BS 5852, crib 5 NF P 92/503-507, M1 DIN 4102, B1 IMO 2010 FTP part 8 UNI 9175, classe 1 Cal TB 117-2013 NFPA 260, class 1
Features	Double faced upholstery, with a plain look on one side and a mélange pattern on the other side
Environment	OEKO -TEX 100 CERTIFIED



Iris

cat. C

100% recycled PET  
Flame retardant - 100.000 Martindale



111



403



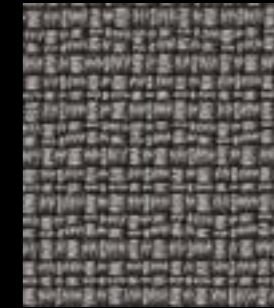
401



402



601



602



610



607



901



501



404



307



304



305



711



703



701



705



707



706



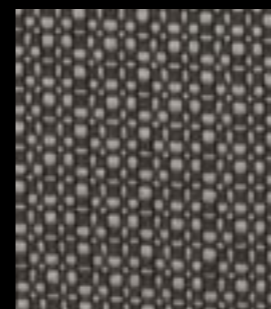
303



802



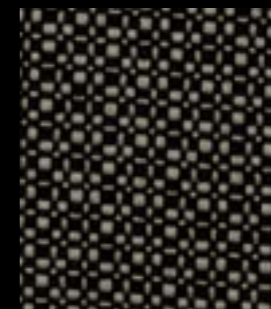
801



603



604



406



605



200



## Technical details

Composition	100% recycled PET
Weight	Gr./ml. 800
Abrasion test	Martindale - ISO 12947-2: 100.000 rubs
Lightfastness	ISO 105-B02: 7
Pilling	ISO 12945-2: 4/5
Fastness to rubbing	ISO 105-X12: Wet Dry 4/5
Flame retardant	Classe 1 IM - UNI 9175 EN 1021-1+2 BS5852:2006 cig.+flame California test (Tb117 + AB2998) IMO FTP Code 2010 - part8
Environment	100% RECYCLABLE OEKO -TEX 100 CERTIFIED



# Trend

cat. C

79% VINYL - 21% CO  
Flame retardant - 150.000 Martindale



29001



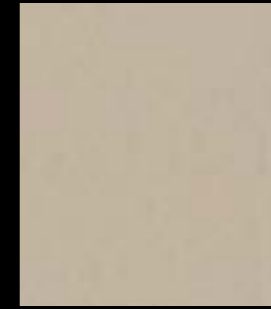
29006



29005



29003



29004



29007



29008



29011



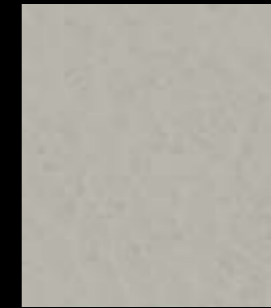
29012



29014



29015



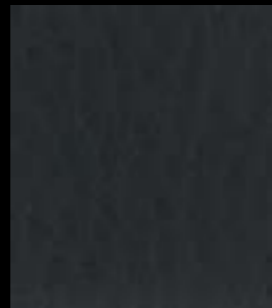
29026



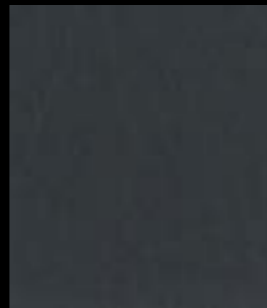
29027



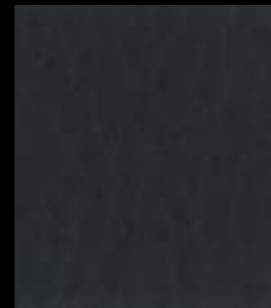
29028



29033



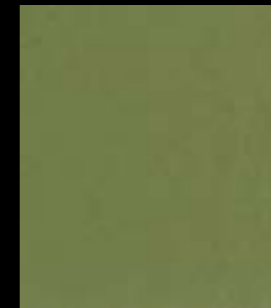
29034



29035



29009



29023



29025



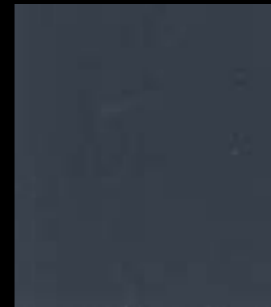
29019



29020



29021



29022



29030



29032



29031



29017



## Technical details

Composition	Content: 79% VINYL - 21% CO
Weight	Gr./m <sup>2</sup> 950
Abrasion test	Martindale - BS 5690: 150.000 rubs
Lightfastness	ISO 105-B02 6
Flame retardant	DIN 75200 FMVSS 302 UNI 9175 Classe 1IM DIN/BS EN 1021 1+2 NF P 92-507 CL.M2 BS 5852/CRIB5 IMO 2010 FTP Code P.8 CAL TB 117
Features	WATERPROOF ANTIFUNGAL PROTECTION ANTIBACTERIAL PROTECTION RESISTANCE TO UV RAYS RESISTANCE TO COLD CRACKING RESISTANCE TO HYDROLYSIS



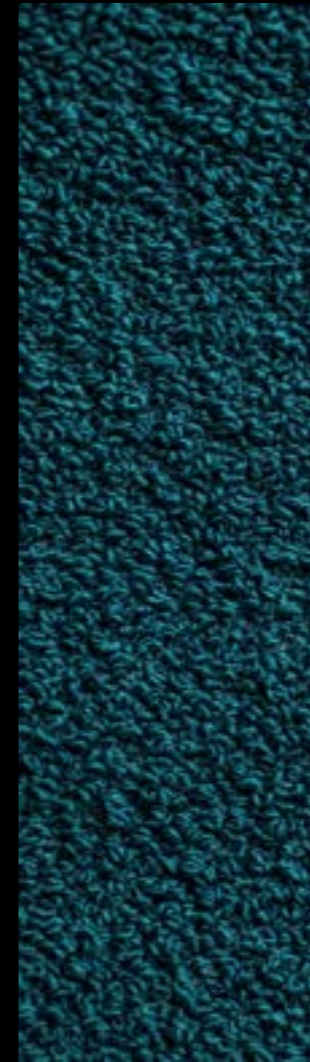
100



401



711



701



706



602



610

# Amelia

cat. Super

100% recycled PET  
Flame retardant - 100.000 Martindale



## Technical details

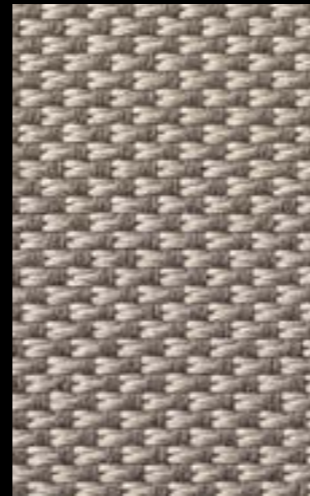
Composition	100% recycled PET - 100% recyclable
Weight	Gr./ml. 980
Abrasion test	Martindale - ISO 12947-2: 50.000 rubs
Lightfastness	ISO 105-B02: 6/7
Pilling	ISO 12945-2: 4
Fastness to rubbing	ISO 105-X12: Wet 4/5 Dry 4/5
Flame retardant	Classe 1 IM - UNI 9175 EN 1021-1+2 BS5852:2006 cig.+flame California test (Tb117 + AB2998) IMO FTP Code 2010 - part8
Environment	100% RECYCLABLE OEKO -TEX 100 CERTIFIED



605



403



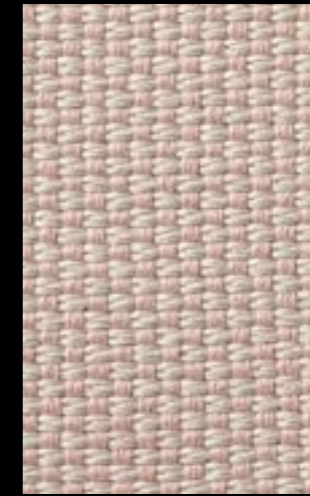
603



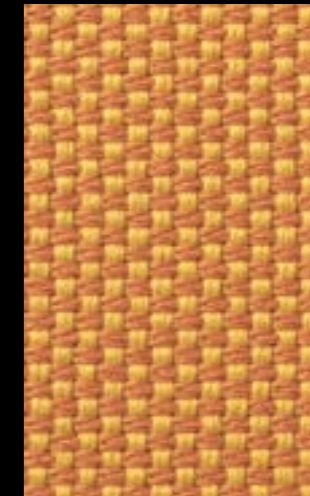
604



406



607



308



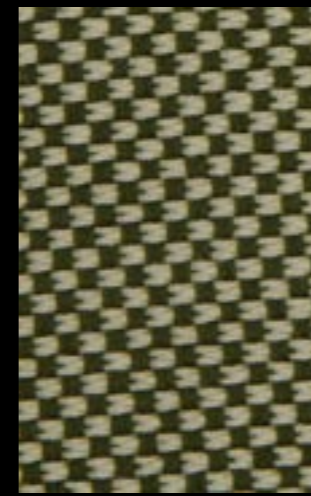
404



302



306



802



703



707

# Nox

cat. Super

100% recycled PET  
Flame retardant - 100.000 Martindale



## Technical details

Composition	100% recycled PET - 100% recyclable
Weight	Gr./ml. 800
Abrasion test	Martindale - ISO 12947-2: 100.000 rubs
Lightfastness	ISO 105-B02: 7
Pilling	ISO 12945-2: 4/5
Fastness to rubbing	ISO 105-X12: Wet 4 Dry 4/5
Flame retardant	Classe 1 IM - UNI 9175 EN 1021-1+2 BS5852:2006 cig.+flame California test (Tb117 + AB2998)
Environment	100% RECYCLABLE OEKO -TEX 100 CERTIFIED



# Orsetto

cat. Super

34% Viscose, 33% Acrylic, 17% Wool,  
8% Polyester, 4% Flax, 4% Cotton  
Flame retardant - 80.000 Martindale



01/1



01/2



05/10



05/121



07/11



07/24



98/18



98/20



02/26



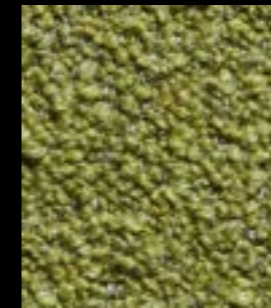
09/64



98/125



98/21



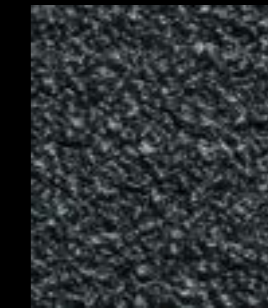
05/9



39/128



09/92



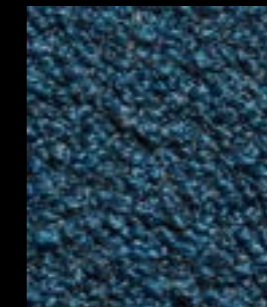
09/12



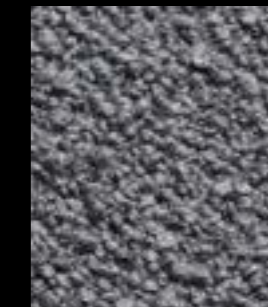
05/6



98/16



09/23



02/22



# Orsetto

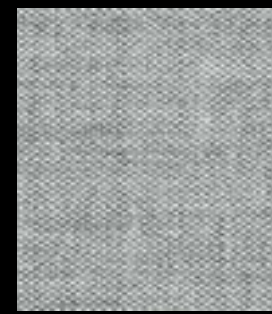
## Technical details

Composition	34% Viscose, 33% Acrylic, 17% Wool, 8% Polyester, 4% Flax, 4% Cotton
Weight	Gr./m <sup>2</sup> 940
Abrasion test	Martindale - ISO 12947-2: 80.000 rubs
Pilling	ISO 12945-2: 5
Flame retardant	EN 1021/1-2 BS 5852 Part 1, Cigarette & Match Cal TB 117 f&f crib 5 (COATING/BACKING) BS 5852- CRIB 5
Cleaning	Dry clean only

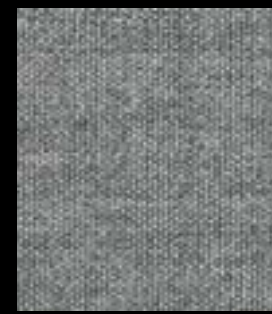




0113



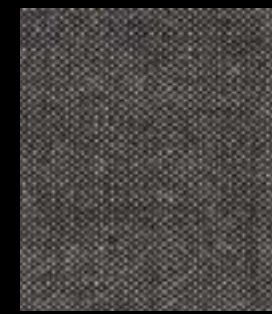
0123



0133



0143



0152



0163



0173



0183



0223



0233



0242



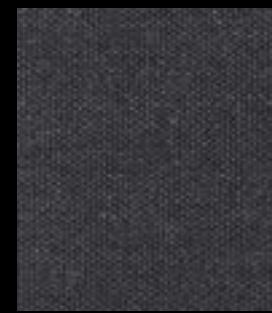
0252



0362



0373



0383



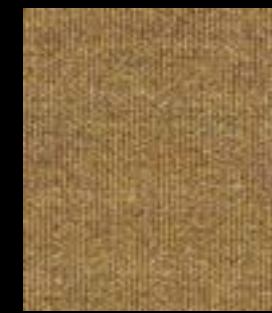
0393



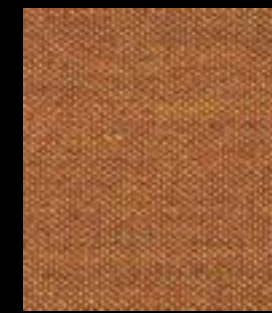
0412



0422



0433



0443



0452



0543



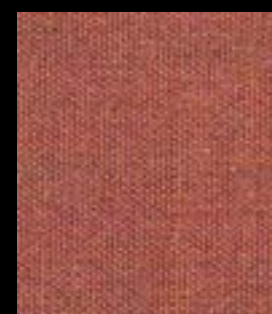
0612



0632



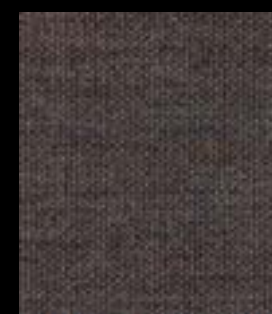
0643



0653



0662



0672



0682



0692



0722



0733



0743



0762



0773



0783



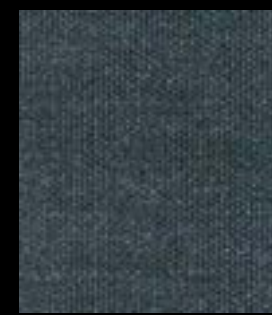
0823



0842



0852



0873



0912



0923



0933



0942



0954



0962



0973



0982

# Remix 3

cat. Super

90% new wool worsted - 10% nylon  
Flame retardant - 100.000 Martindale



Remix 3

eco-sustainable

## Technical details

Composition	90% new wool worsted - 10% nylon
Weight	Gr./m <sup>2</sup> 420
Abrasion test	Martindale - ISO 12947-2: 100.000 rubs
Lightfastness	ISO 105-B02: 5/7
Pilling	ISO 12945-2: 4
Flame retardant	AS/NZS 1530.3 AS/NZS 3837 class 2 ASTM E84 Class A Unadhered ASTM E84 Class A Adhered BS 5852 part 1 EN 1021-1/2 IMO FTP Code 2010 Part 8 NF D 60 013 NFPA 260 UNI 9175 1IM US Cal. Bull. 117-2013 ÖNORM B1/Q1
Environment	EU ECOLABEL GREENGUARD CERTIFICATION GREENGUARD GOLD CERTIFICATION HPD EPD

laCividina

cat. Super

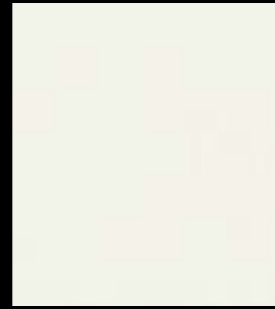
2023



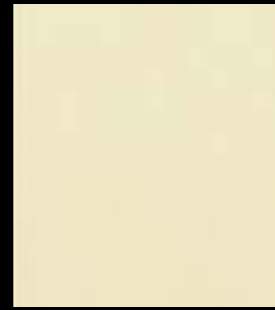
# Teraskin

cat. Super

55% silicone, 45% polyester  
Flame retardant - 100.000 Martindale



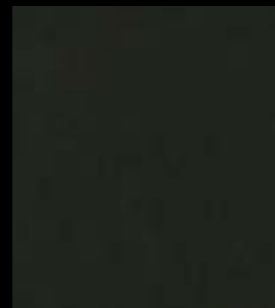
111



103



607



200



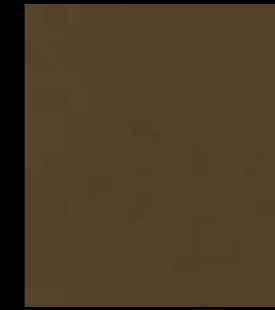
405



307



810



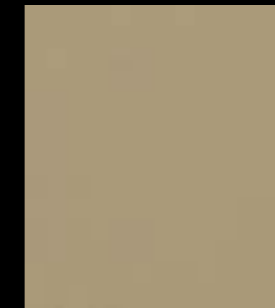
408



302



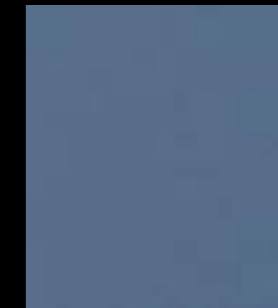
708



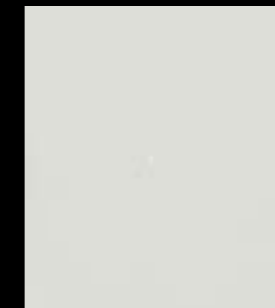
400



403



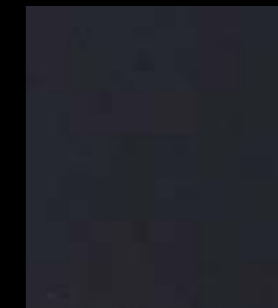
701



105



801

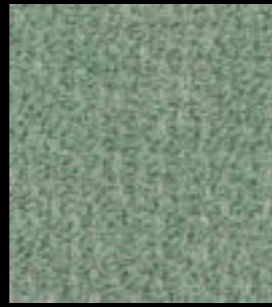


700



## Technical details

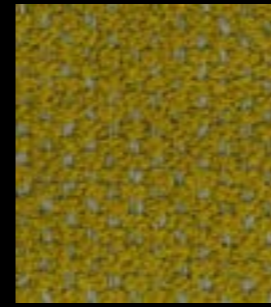
Composition	55% silicone, 45% polyester
Weight	Gr./m <sup>2</sup> 650
Abrasion test	Martindale - ISO 12947-2: 100.000 rubs
Lightfastness	ISO 105-B02: 7-8
Fastness to rubbing	ISO 105-X12: Wet 4 / Dry 4-5 AATCC 8: Wet 5 / Dry 5
Flame retardant	1IM - UNI 9175 EN 1021 part 1/2 BS 5852 part 1 BS 5852 crib 5 NF D-60 013 (AM 18) California TB 117:2013 NFPA 260 IMO MED - Ftp 307 part 8 ÖNORM 3825
Features	FREE FROM: SOLVENTS, PVC, PU, PFC, FORMALDEHYDE, PLASTICIZERS, PHTHALATES, HEAVY METALS, BPA, ALLERGENS, ANTI-BACTERIAL ADDITIVES, BIOCIDES
Environment	RECYCLABLE ECO-FRIENDLY NON TOXIC



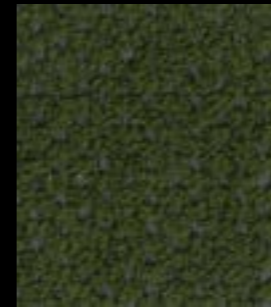
22



20



19



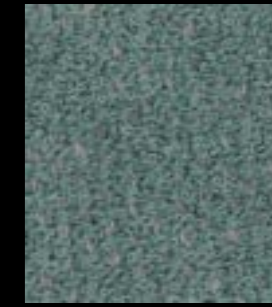
21



23



14



17



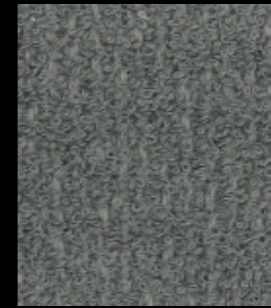
18



16



25



27



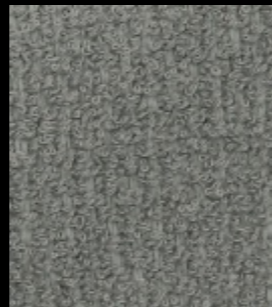
24



26



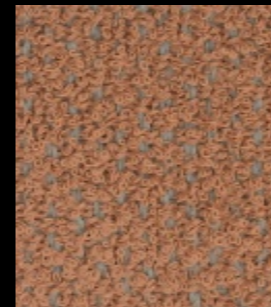
13



05



10



07



11



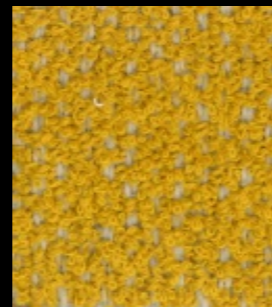
03



02



04



01



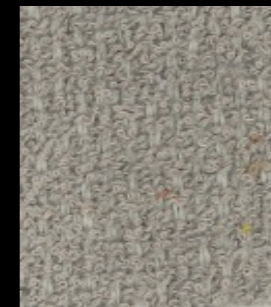
12



15



08



09



06

# Foster

cat. Super

97% recycled polyester FR - 3% polyester FR  
Flame retardant - 60.000 Martindale



Technical details

Composition	97% recycled polyester FR - 3% polyester FR
Weight	Gr./ml 749
Abrasion test	Martindale - ISO 12947-2: 60.000 rubs
Lightfastness	ISO 105-B02: 6
Pilling	ISO 12945-2: 4
Fastness to rubbing	ISO 105-X12: Wet 4/5 Dry 4/5
Flame retardant	EN 1021-1/2 cigarette & match BS 5852 crib 5 NF P 92/503-507, M1 DIN 4102, B1 UNI 9175, classe 1.IM Cal TB 117 NFPA 260, class 1 IMO 2010 FTP part 8
Environment	OEKO-TEX 100 CERTIFIED ECOLOGICALLY PRODUCED IN EUROPE

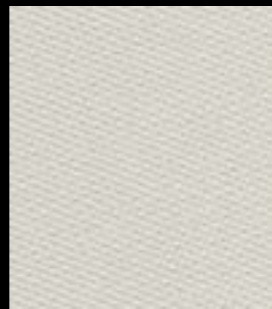




# Rime

cat. Extra

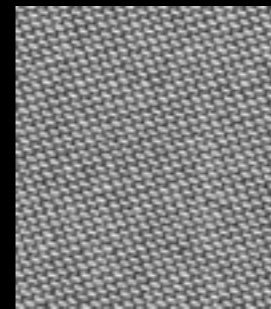
90% new wool worsted - 10% nylon  
Flame retardant - 100.000 Martindale



0111



0131



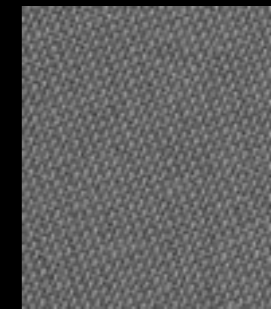
0151



0211



0231



0271



0451



0471



0521



0541



0551



0571



0591



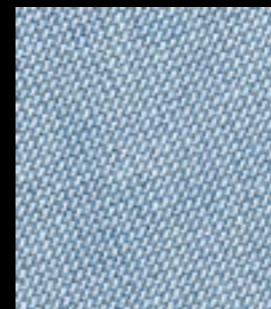
0621



0641



0691



0721



0731



0741



0781



0791



0911



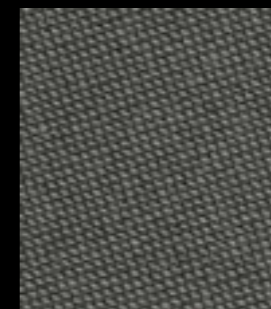
0921



0941



0951



0981

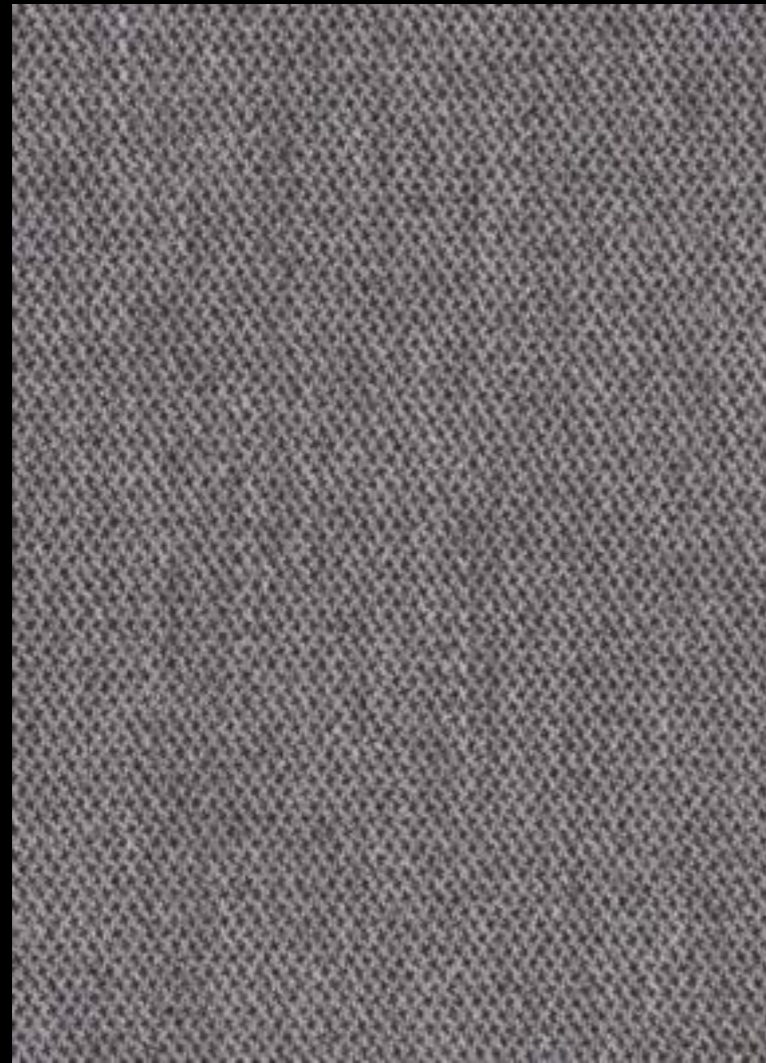


0991



## Technical details

Composition	90% new wool worsted - 10% nylon
Weight	Gr./m <sup>2</sup> 580
Abrasion test	Martindale - ISO 12947-2: 100.000 rubs
Lightfastness	ISO 105-B02: 5/6
Pilling	ISO 12945-2: 4
Flame retardant	AS/NZS 3837, class 2 BS 5852 part 1 DIN 4102 B2 EN 1021-1/2 IMO FTP Code 2010 Part 8 NF D 60 013 ÖNORM B2/Q1 UNI 9175 1IM US Cal. Bull. 117-2013
Environment	EU ECOLABEL GREENGUARD CERTIFICATION GREENGUARD GOLD CERTIFICATION HPD EPD



# Molly 2

cat. Extra

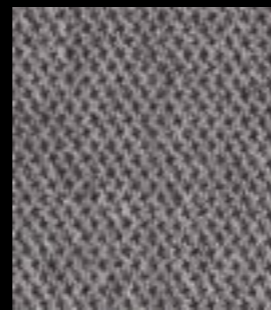
100% new wool worsted  
Flame retardant - 75.000 Martindale



0110



0122



0164



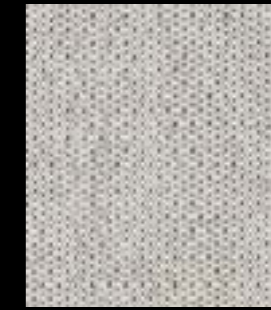
0192



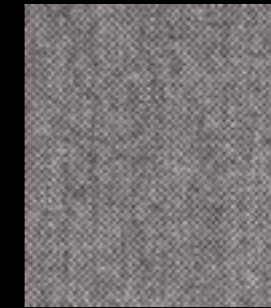
0112



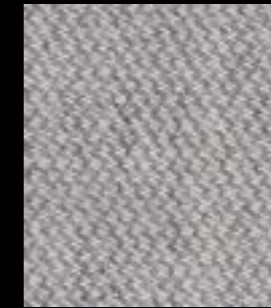
0114



0116



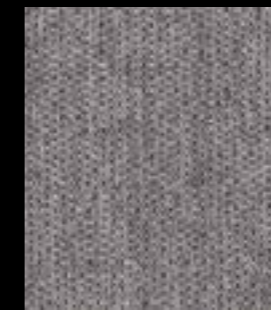
0152



0154



0160



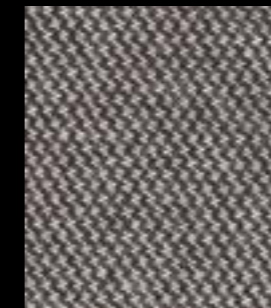
0166



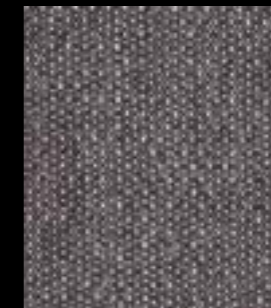
0170



0190



0194



0196



Technical details

Composition	100% new wool worsted
Weight	Gr./m <sup>2</sup> 690
Abrasion test	Martindale - ISO 12947-2: 75.000 rubs
Lightfastness	ISO 105-B02: 6/7
Pilling	ISO 12945-2: 3/4
Flame retardant	BS 5852 part 1 EN 1021-1/2 IMO FTP Code 2010 Part 8 NF D 60 013 NFPA 260 ÖNORM B1/Q1 UNI 9175 1IM US Cal. Bull. 117-2013
Environment	EU ECOLABEL GREENGUARD CERTIFICATION GREENGUARD GOLD CERTIFICATION HPD





# Steelcut Trio 3

cat. Extra

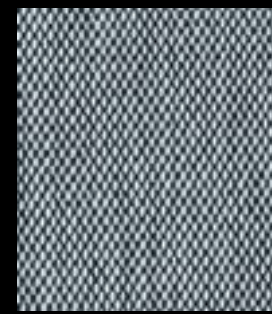
90% new wool worsted - 10% nylon  
Flame retardant - 100.000 Martindale



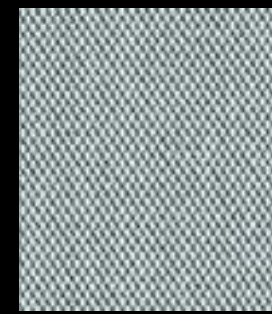
0105



0113



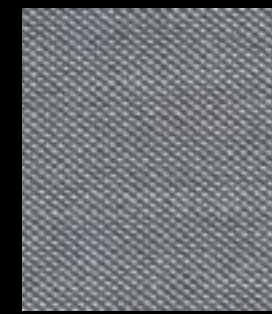
0124



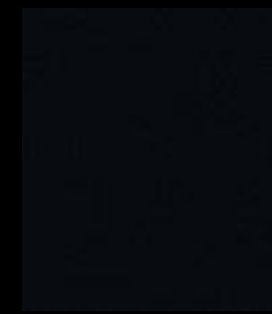
0133



0153



0176



0195



0205



0213



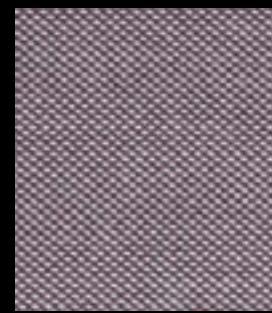
0246



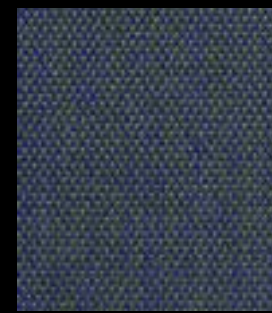
0253



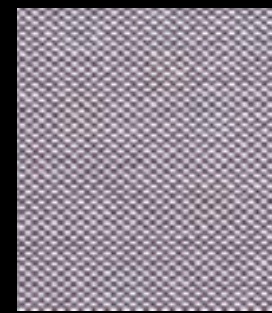
0266



0276



0283



0336



0376



0383



0416



0426



0446



0453



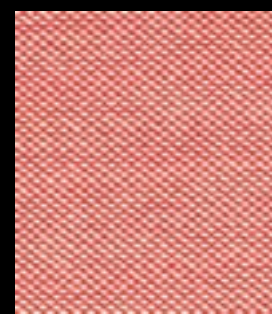
0466



0476



0515



0526



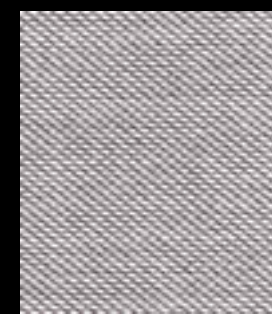
0533



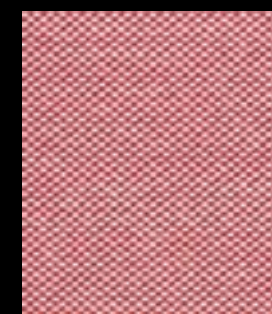
0553



0576



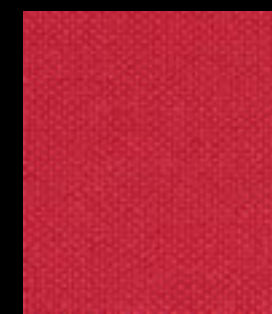
0616



0636



0645



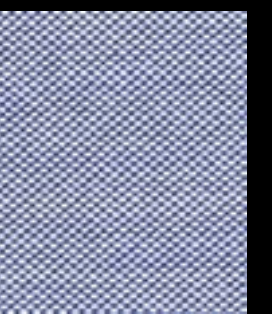
0666



0686



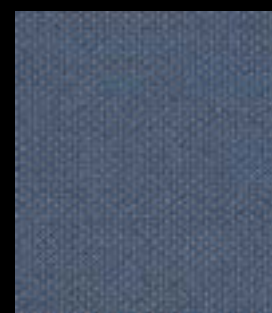
0713



0716



0746



0756



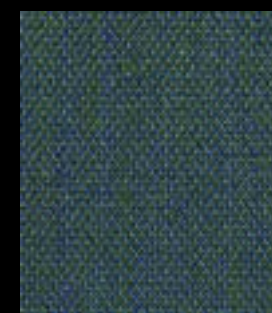
0776



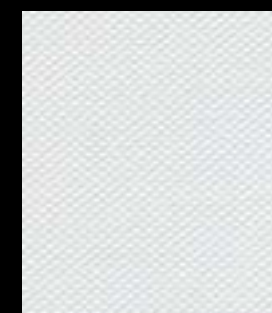
0796



0806



0883



0906



0946



0953



0966



0976



0983



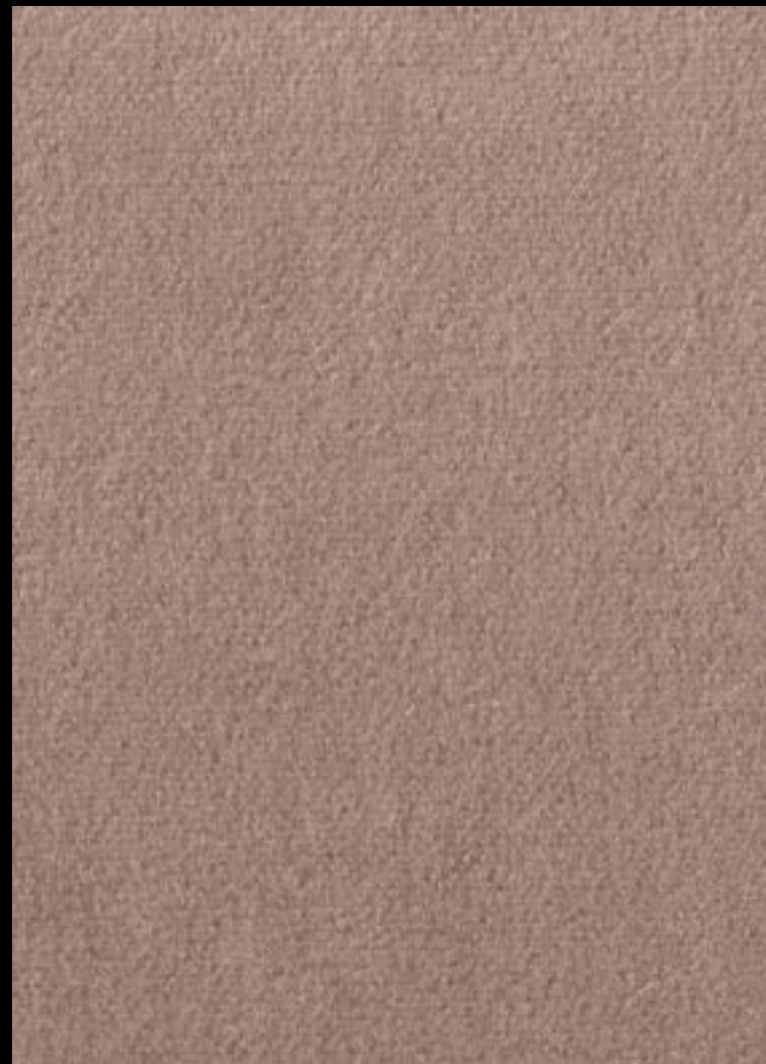
0996



eco-sustainable Steelcut Trio 3

Technical details

Composition	90% new wool worsted - 10% nylon
Weight	Gr./m <sup>2</sup> 770
Abrasion test	Martindale - ISO 12947-2: 100.000 rubs
Lightfastness	ISO 105-B02: 6/7
Pilling	ISO 12945-2: 4
Flame retardant	AS/NZS 1530.3 AS/NZS 3837 class 2 ASTM E84 Class B Unadhered ASTM E84 Class B Adhered BS 5852 part 1 EN 1021-1/2 IMO FTP Code 2010 Part 8 NF D 60 013 NFPA 260 ÖNORM B1/Q1 UNI 9175 1IM US Cal. Bull. 117-2013
Environment	ECOLABEL GREENGUARD CERTIFICATION GREENGUARD GOLD CERTIFICATION HPD EPD



# Ariana

cat. Extra

100% mohair (base: cotton)  
Flame retardant - 90.000 Martindale



7061.01



7061.02



7061.03



7061.05



7061.06



7061.07



7061.08



7061.09



7061.10



7061.11



7061.12



7061.13



7061.14



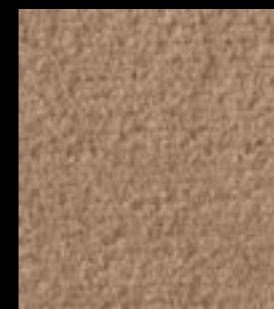
7061.17



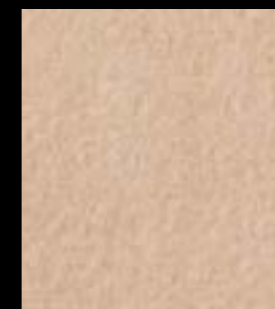
7061.18



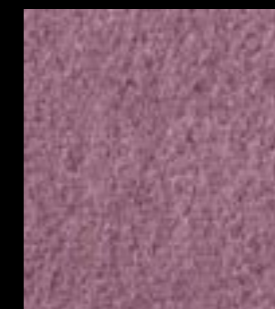
7061.19



7061.20



7061.21



7061.22



7061.23



7061.24



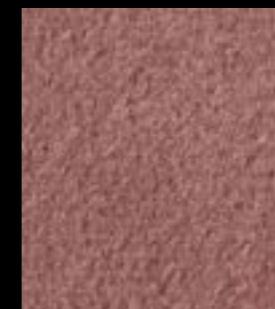
7061.27



7061.28



7061.29



7061.30



7061.31



7061.32

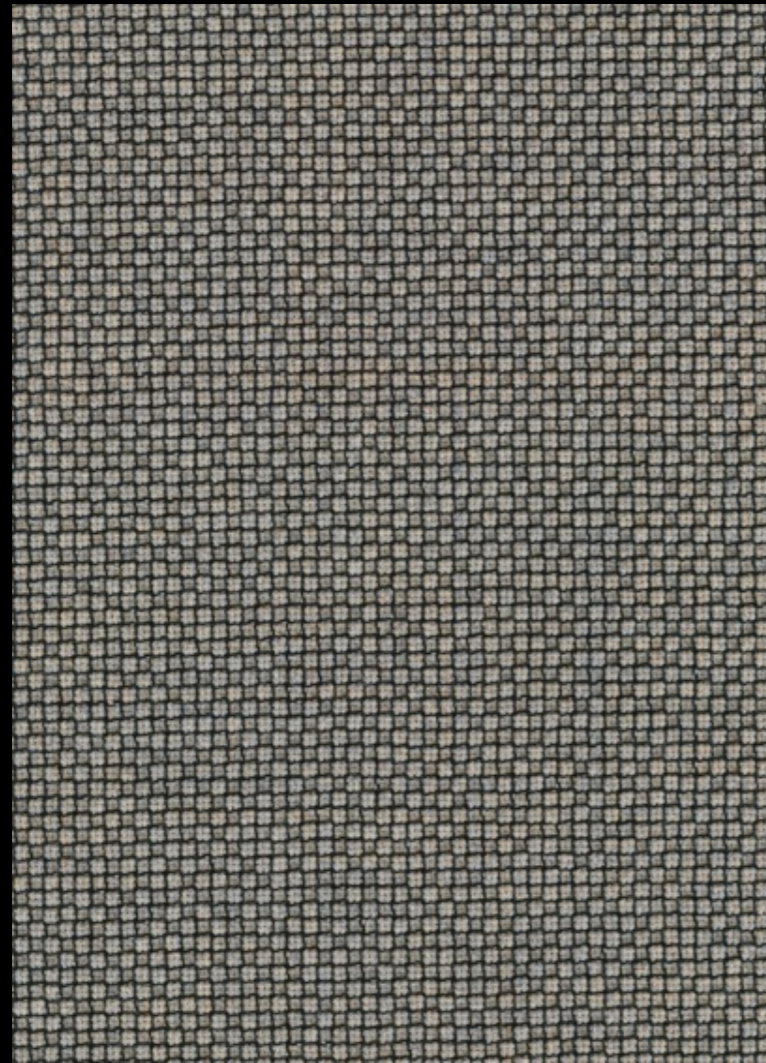


7061.35



## Technical details

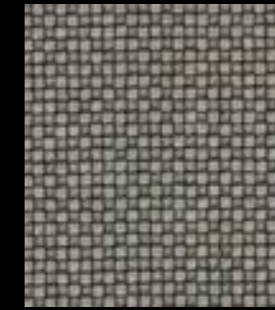
Composition	100% mohair (base: cotton)
Weight	Gr./ml. 765
Abrasion test	Martindale - ISO 12947-2: 90.000 rubs
Lightfastness	ISO 105-B02: 5
Pilling	ISO 12945-2: 4/5
Fastness to rubbing	ISO 105-X12: Wet 4-5 / Dry 4-5 AATCC 8: Wet 5 / Dry 5
Flame retardant	EN 1021/1-2 BS 5852, crib 5 NF P 92 / 503-507, M2 with FR finish DIN 4102, B2 UNI 9175, classe 1 IM Cal TB 117 NFPA 260, class 1 IMO 2010 FTP part 8
Environment	CRADLE TO CRADLE BRONZE CERTIFIED CERTIFIED TO OEKO-TEX® STANDARD 100



# Colline 2

cat. Extra

75% new wool worsted - 17% polyacrylic - 8% nylon  
Flame retardant - 100.000 Martindale



0127



0147



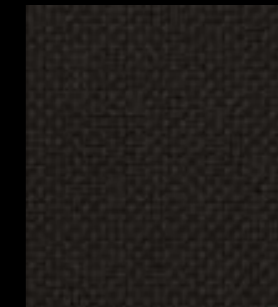
0177



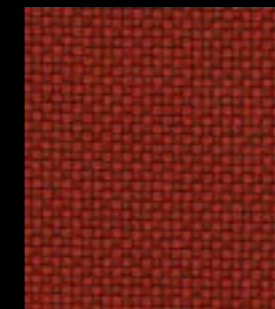
0227



0347



0397



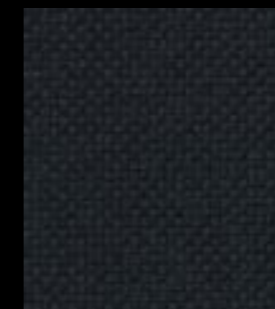
0657



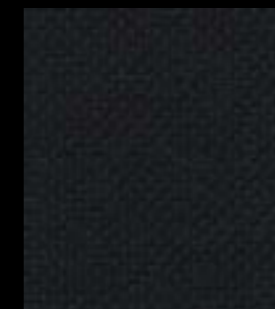
0677



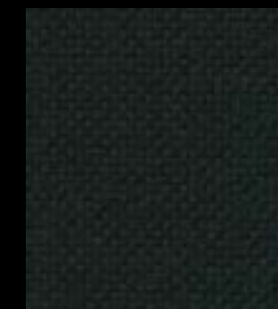
0737



0787



0797



0987



## Technical details

Composition	75% new wool worsted - 17% polyacrylic - 8% nylon
Weight	Gr./ml. 650
Abrasion test	Martindale - ISO 12947-2: 100.000 rubs
Lightfastness	ISO 105-B02: 7
Pilling	ISO 12945-2: 4/5
Flame retardant	AS/NZS 1530.3 BS 5852 part 1 EN 1021-1/2 IMO FTP Code 2010 Part 8 UNI 9175 1IM US Cal. Bull. 117-2013
Environment	GREENGUARD CERTIFICATION GREENGUARD GOLD CERTIFICATION HPD EPD



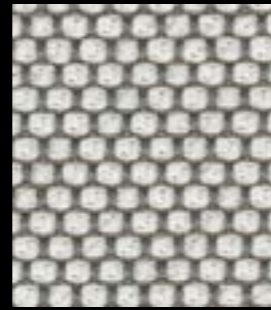


carbon

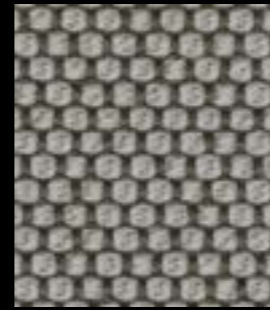
# Opera

cat. Extra

96% virgin wool - 4% polyamide  
Flame retardant - 90.000 Martindale



mirror



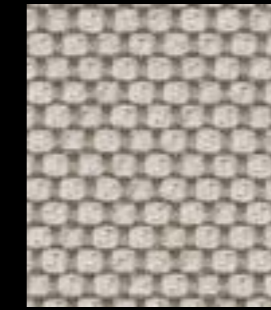
fango



taupe



flanell



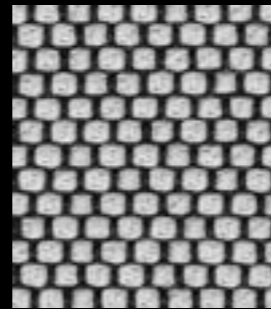
macadamia



calla



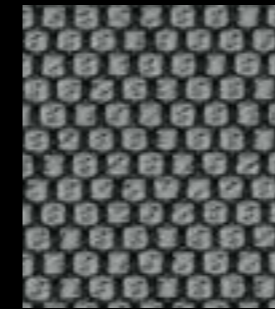
kristall



pepper



ebony



kies



anthrazit



rosewood



sorbet



aureo



prime



maple



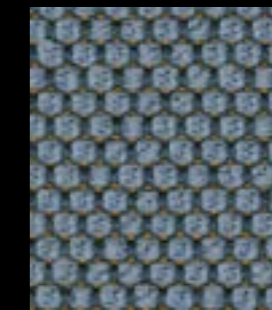
lake



brick



jade



bleu



delft



navy



delphi



indio



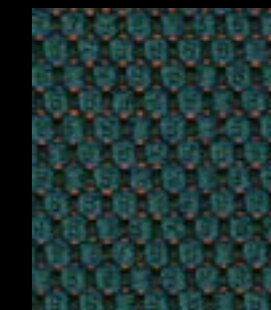
guave



clementine



aloe



smaragd



Opera

eco-sustainable

## Technical details

Composition	96% virgin wool - 4% polyamide
Weight	Gr./ml. 1010
Abrasion test	Martindale - ISO 12947-2: 90.000 rubs
Lightfastness	ISO 105-B02: 5/8
Pilling	ISO 12945-2: 4/5
Flame retardant	FAR 25.853 (12 sec. vertical) CAL TB 117 - 2013 DIN 4102-1 B2 EN 13501-1 EN 1021 1/2 BS 5852:2006 (part1) BS 5852:2006 (part2) Crib5 UNI 9175 (1 IM) IMO: 2014/90/EU Marine Equipment Directive
Features	NATURAL MATERIAL SOFT TOUCH
Environment	NATURAL RENEWABLE MATERIAL IWTO GUIDELINES FOR WOOL SHEEP WELFARE





asphalt

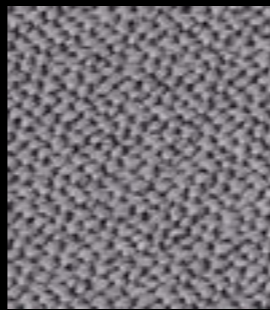
# Arco

cat. Extra

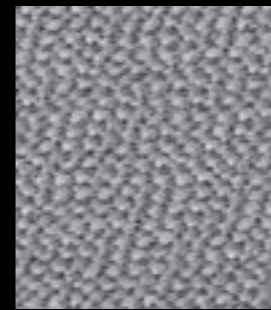
95% WV - 5% PA  
Flame retardant - 70.000 Martindale



lanoso



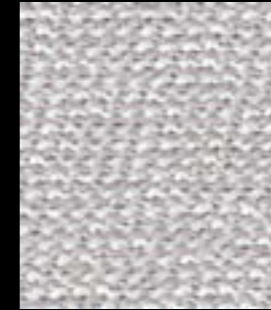
gravel



fels



snow



arctic



pebble



ebony



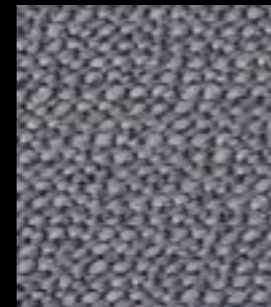
secret



coffee



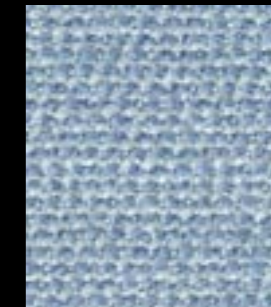
truffle



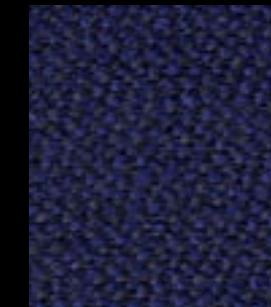
kies



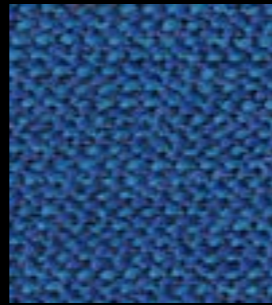
coast



breeze



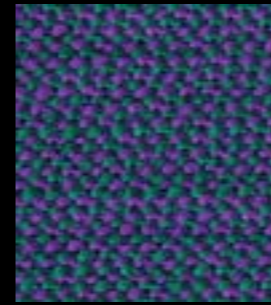
ink



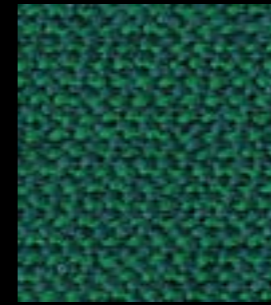
mare



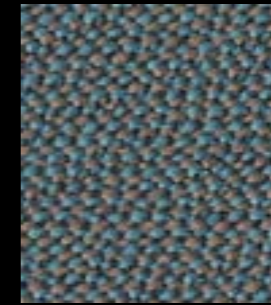
cobalt



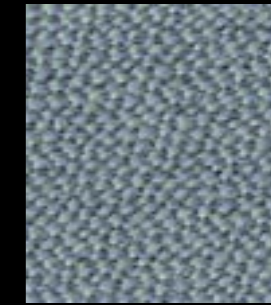
circus



garden



pond



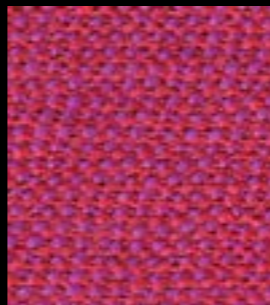
aqua



citron



cherry



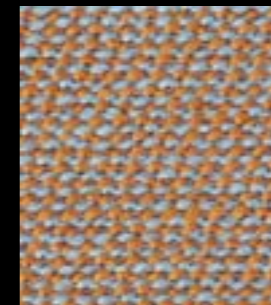
magenta



fire



blossom



jade



safran



corn



## Technical details

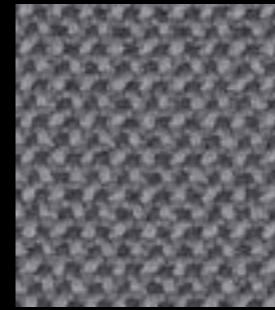
Composition	95% WV - 5% PA
Weight	Gr./ml. 980
Abrasion test	Martindale - ISO 12947-2: 70.000 rubs
Lightfastness	ISO 105-B02: 5/8
Pilling	ISO 12945-2: 4/5
Flame retardant	FAR 25.853 (12 sec. vertical) CAL TB 117 - 2013 DIN 4102-1 B2 EN 13501-1 EN 1021 1/2 BS 5852:2006 (part1) BS 5852:2006 (part2) Crib5 IMO: 2014/90/EU Marine Equipment Directive NF D 60-013 (Art. AM 18)
Special finishes	Anti-shrink, anti-pilling, yarn dyed
Environment	NATURAL RENEVABLE MATERIAL



snow



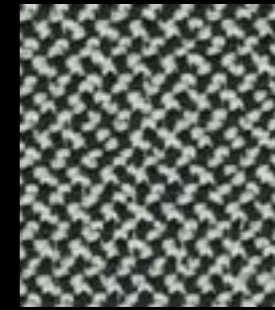
chalk



fels



schiefer



pepper



carbon



asphalt



black



macadamia



aureo



diamond



zinn



fango



taupe



walnut



lake



aloe



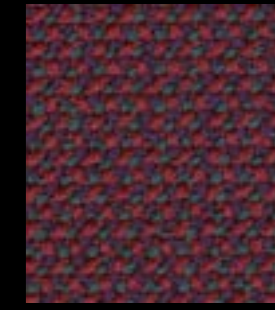
grapefruit



kupfer



lampion



rubin



breva



navy



sea



jaspis



forest

# Credo

cat. Extra

95% WV - 5% PA  
Flame retardant - 100.000 Martindale



Credo

eco-sustainable

## Technical details

Composition	95% WV - 5% PA
Weight	Gr./ml. 870
Abrasion test	Martindale - ISO 12947-2: 100.000 rubs
Lightfastness	ISO 105-B02: 5/8
Pilling	ISO 12945-2: 4/5
Flame retardant	CAL TB 117 - 2013 DIN EN 1021-1/ -2 BS 5852 part 1: 1979 UNI 9175 1 IM IMO 2014/90/EU Marine Equipment Directive (MED) ÖNORM B1/Q1
Special finishes	Anti-shrink, anti-pilling, yarn dyed
Environment	NATURAL RENEVABLE MATERIAL IWTO GUIDELINES FOR WOOL SHEEP WELFARE



Cleo

95% WV – 5%PA  
Flame retardant - 60.000 Martindale



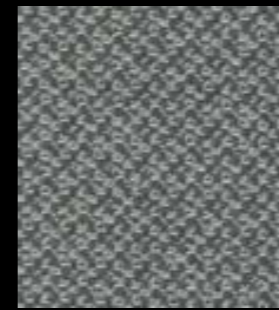
pearl



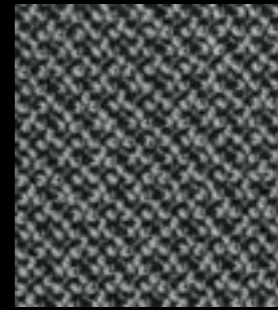
angora



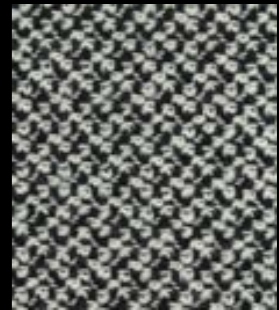
linen



rock



carbon



pepper



water



salbei



walnut



gold



lemon



azalee



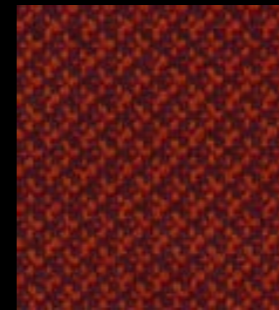
flamingo



passion



peach



lampion



marone



magma



sky



ocean



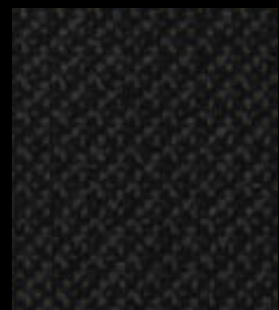
anthrazit



ink



lanoso

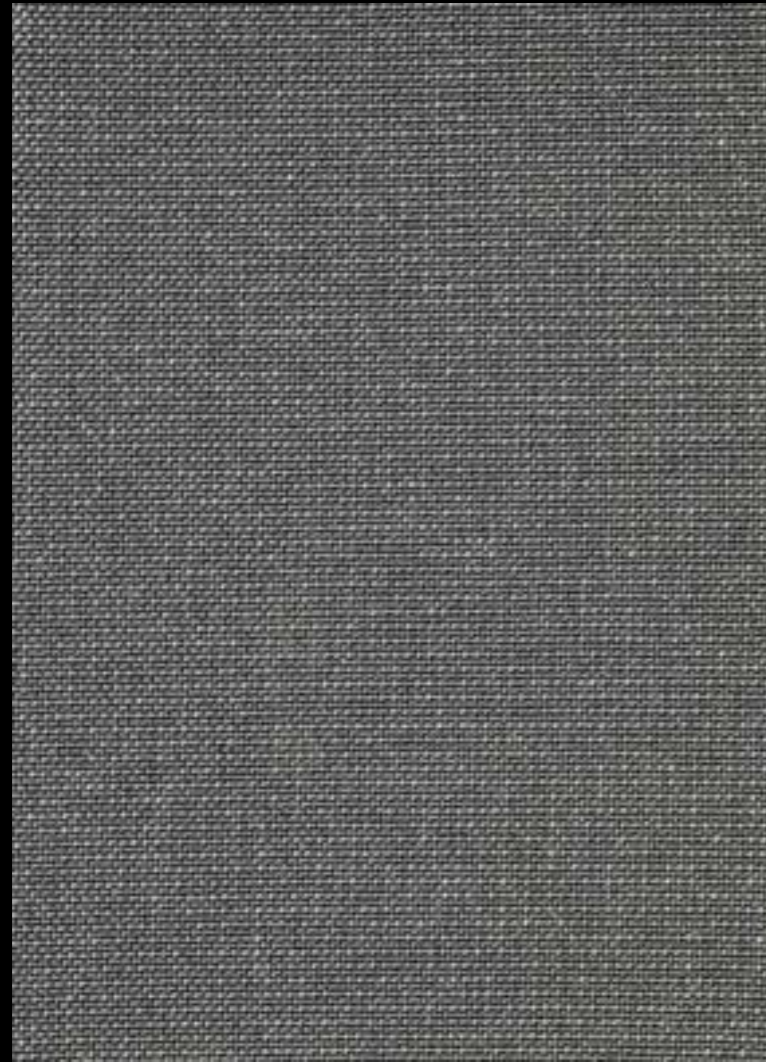


coal



## Technical details

Composition	95% WV – 5%PA
Weight	Gr./m <sup>2</sup> 690
Abrasion test	Martindale - ISO 12947-2: 60.000 rubs
Lightfastness	ISO 105-B02: 5
Pilling	ISO 12945-2: 4/5
Fastness to rubbing	ISO 105-X12: Wet 4/5 Dry 4/5
Flame retardant	UNI 9175 1IM CAL TB 117 - 2013 DIN EN 1021- 1/-2 BS 5852 part 1: 1979 ÖNORM B1/Q1
Environment	NATURAL RENEWABLE MATERIAL IWTO GUIDELINES FOR WOOLSHEEP WELFARE



# Trio

cat. Extra

98% recycled polyester, 2% elastan Lycra  
Flame retardant - 350.000 Martindale



105



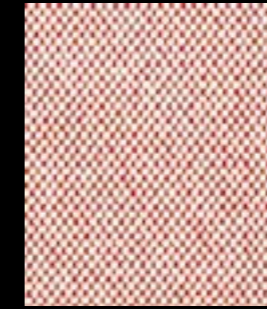
106



107



104



103



807



705



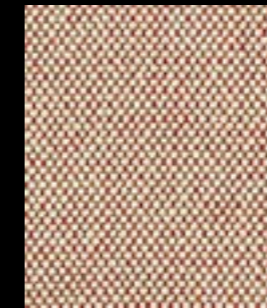
108



307



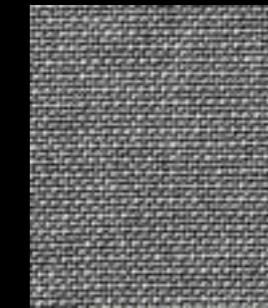
607



803



305



605



804



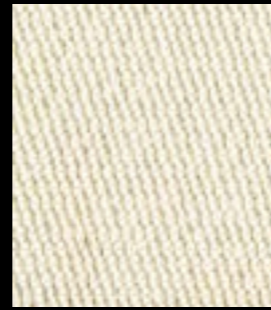
703



## Technical details

Composition	98% recycled polyester, 2% elastan Lycra
Weight	Gr./m <sup>2</sup> 850
Abrasion test	Martindale - ISO 12947-2: 350.000 rubs
Lightfastness	ISO 105-B02: 6/7
Pilling	ISO 12945-2: 4/5
Flame retardant	11M - UNI 9175 EN 1021 part 1/2 BS 7176 + A1 medium hazard BS 5852 crib 5 NF-P 92 503 - M3 NFPA 260 California TB 117:2013 IMO MED 3.20/Ftp 307 part 8 B-s1,d0 - EN 13501
Environment	OEKO-TEX® GRS® RECYCLED AND RECYCLABLE MADE OUT OF RECYCLED PET





100



708



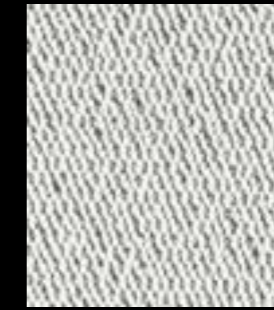
103



105



109



106



107



705



704



703



607



603



102



306



307



803



108



608

# Bit

cat. Extra

98% recycled polyester, 2% elasthan Lycra  
Flame retardant - 350.000 Martindale



Composition	98% recycled polyester, 2% elasthan Lycra
Weight	Gr./m <sup>2</sup> 1050
Abrasion test	Martindale - ISO 12947-2: 350.000 rubs
Lightfastness	ISO 105-B02: 6/7
Pilling	ISO 12945-2: 4/5
Flame retardant	1IM - UNI 9175 EN 1021 part 1/2 BS 7176 + A1 medium hazard BS 5852 crib 5 NF-P 92 503 - M3 NFPA 260 California TB 117:2013 IMO MED 3.20/Ftp 307 part 8
Environment	OEKO-TEX® GRS® RECYCLED AND RECYCLABLE MADE OUT OF RECYCLED PET



0922



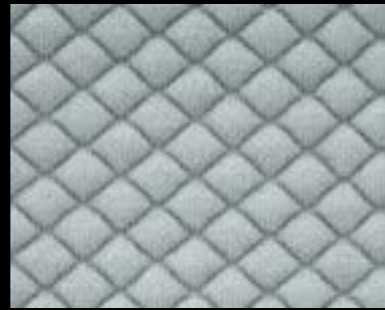
0222



0262



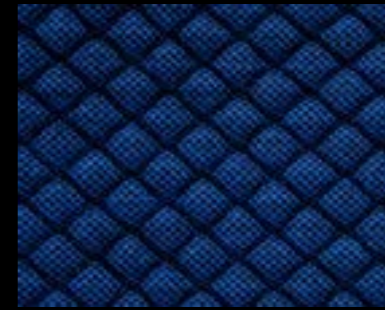
0182



0722



0642



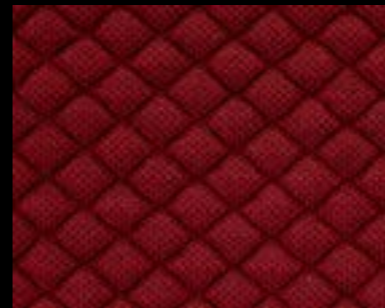
0772



0692



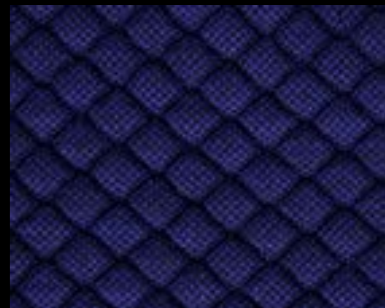
0532



0662



0682



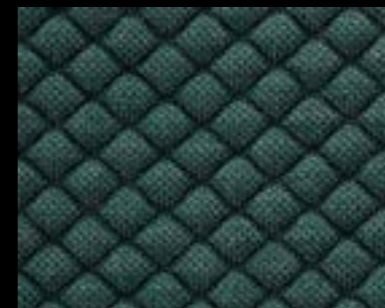
0672



0422



0472



0972

# Mosaic 2

cat. Maxi

46% polyester filling - 27% new wool - 12% polyester -  
9% nylon - 6% elastane  
Flame retardant - 100.000 Martindale



eco-sustainable

Mosaic 2

## Technical details

Composition	46% polyester filling - 27% new wool - 12% polyester - 9% nylon - 6% elastane
Weight	Gr./m <sup>2</sup> 1080
Abrasion test	Martindale - ISO 12947-2: 100.000 rubs
Lightfastness	ISO 105-B02: 6/7
Pilling	ISO 12945-2: 4/5
Fastness to rubbing	ISO 105-X12: 4/5
Flame retardant	BS 5852 Part 1 DIN 4102 B2 EN 1021-1/2 IMO FTP Code 2010:Part 8 US Cal. Bull. 117-2013
Features	STRETCH MATERIAL
Environment	GREENGUARD CERTIFICATION GREENGUARD GOLD CERTIFICATION HPD EPD



# Uniform Mélange

cat. Maxi

68% new wool 22% nylon 10% polyester  
Flame retardant - 100.000 Martindale



aloë 0913



oase 0963



cyan 0833



peacock 0983



cactus 0993



ice 0813



jeans 0723



sea 0753



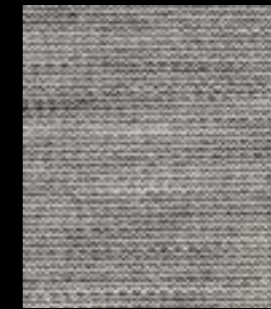
hydro 0883



ink 0793



smoke 0123



ash 0133



stone 0163



chalk 0183



charcoal 0193



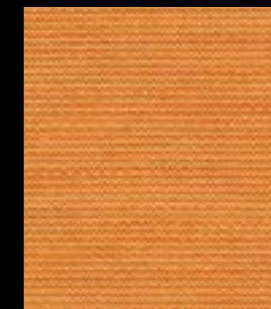
shell 0103



clay 0153



café 0283



sunset 0463



autumn 0553



solar 0453



copper 0353



oil 0333



coral 0623



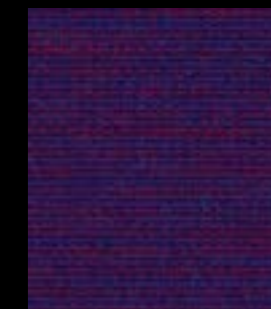
rumba 0563



tango 0593



violet 0633



blueberry 0683

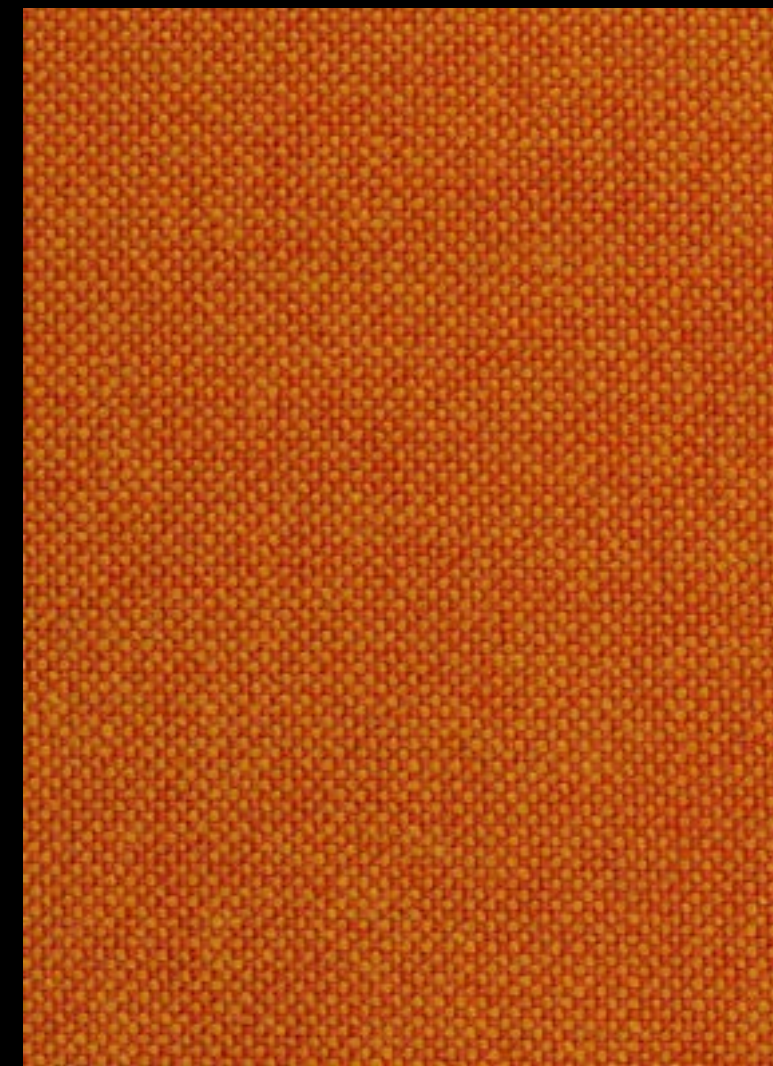


eco-sustainable Uniform Mélange

## Technical details

Composition	68% new wool 22% nylon 10% polyester
Weight	Gr./ml 870
Abrasion test	Martindale - ISO 12947-2: 100.000 rubs
Lightfastness	ISO 105-B02: 6
Pilling	ISO 12945-2: 4
Fastness to rubbing	ISO 105-X12: Wet 4 Dry 4/5
Flame retardant	EN 1021-1/2 BS 5852 part 1 DIN 4102-B2 US Cal. Tech. Bull. 117 IMO FTP Code part 8 BS 5852 Crib 5 with treatment
Features	STRETCH MATERIAL
Environment	GREENGUARD GOLD HPD EPD

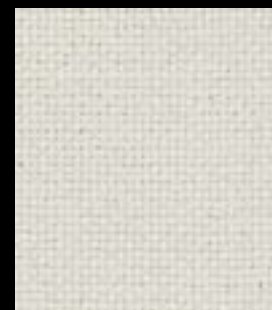




# Hallingdal 65

cat. Maxi

70% new wool - 30% viscose  
Flame retardant - 100.000 Martindale



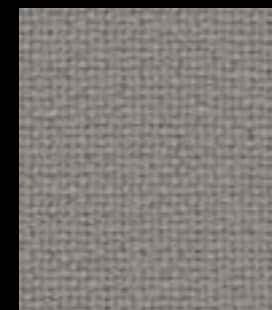
0100



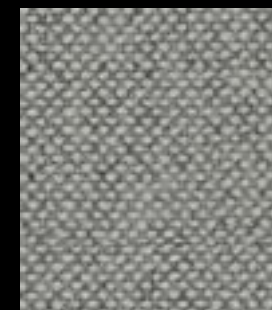
0103



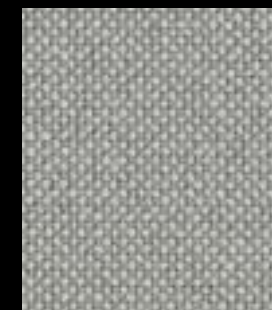
0110



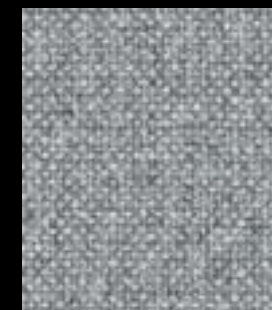
0113



0116



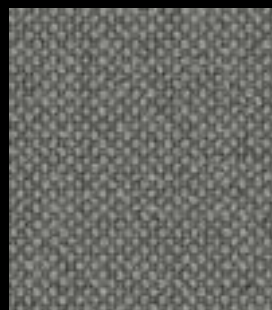
0123



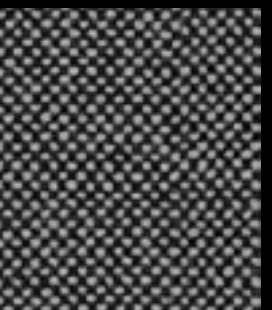
0130



0143



0153



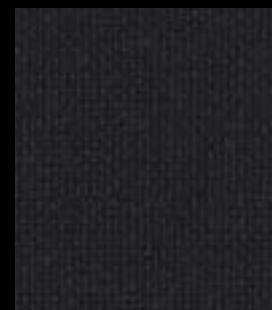
0166



0173



0180



0190



0200



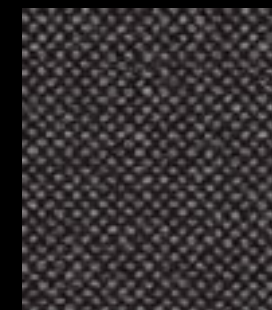
0220



0227



0270



0368



0370



0376



0407



0420



0457



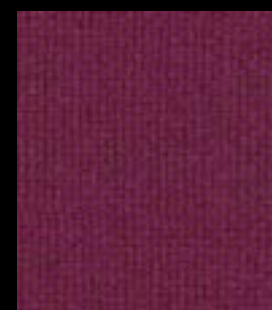
0526



0547



0563



0573



0590



0600



0657



0674



0680



0687



0702



0723



0733



0750



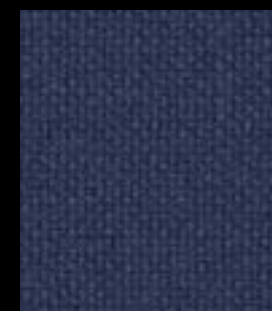
0753



0754



0763



0764



0773



0810



0840



0850



0890



0960



0980



eco-sustainable Hallingdal 65

Technical details

Composition	70% new wool - 30% viscose
Weight	Gr./ml. 795
Abrasion test	Martindale - ISO 12947-2: 100.000 rubs
Lightfastness	ISO 105-B02: 5-7
Pilling	ISO 12945-2: 3-4
Flame retardant	AS/NZS 1530.3 AS/NZS 3837 class 2 ASTM E84 Class A Adhered ASTM E84 Class B Unadhered BS 5852 Crib 5 BS 5852 part 1 EN 1021-1/2 IMO FTP Code 2010 Part 8 NF D 60 013 NFP A 260 ÖNORM B1/Q1 UNI 9175 1IM US Cal. Bull. 117-2013
Environment	EU ECOLABEL GREENGUARD GOLD HPD EPD



# Divina 3

cat. Maxi

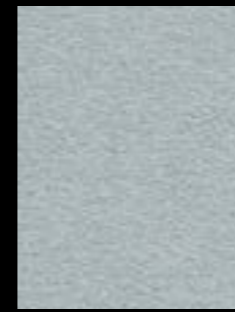
100% new wool  
Flame retardant - 45.000 Martindale



0106



0154



0171



0173



0181



0191



0224



0246



0346



0356



0384



0393



0444



0462



0536



0542



0623



0636



0652



0666



0676



0686



0691



0692



0696



0712



0742



0756



0782



0791



0826



0846



0876



0922



0936



0956



Divina 3

eco-sustainable

## Technical details

Composition	100% new wool
Weight	Gr./m <sup>2</sup> 840
Abrasion test	Martindale - ISO 12947-2: 45.000 rubs
Lightfastness	ISO 105-B02: 5/6
Pilling	ISO 12945-2: 3
Flame retardant	AS/NZS 1530.3 ASTM E84 Class A Adhered ASTM E84 Class B Unadhered BS 5852 part 1 BS 5867 part 2 type B EN 1021-1/2 NF D 60 013 NFPA 260 ÖNORM B1/Q1 UNI 9175 1IM US Cal. Bull. 117-2013
Environment	EU ECOLABEL GREENGUARD GOLD HPD EPD



banana 0422

# Triangle

cat. Special

17% wool - 5% polyamide - 13% polyester -  
65% polyester filling  
Flame retardant - 60.000 Martindale



blush 0532



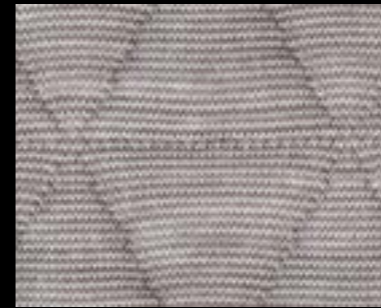
oase 0932



chalk 0152



blueberry 0672



pebble 0232



flame 0572



hydro 0772



brownie 0292



smoke 0122



rumba 0592



swamp 0972



charcoal 0192



ice 0732



copper 0252



violet 0662



saffier 0792



# Triangle

## Technical details

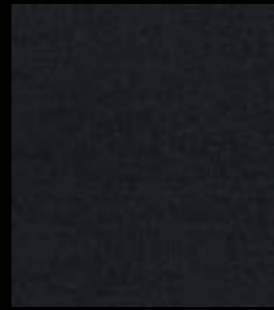
Composition	17% wool - 5% polyamide - 13% polyester - 65% polyester filling
Weight	Gr./m <sup>2</sup> 1,440
Abrasion test	Martindale - ISO 12947-2: 60.000 rubs
Lightfastness	ISO 105-B02: 7
Pilling	ISO 12945-2: 4/5
Fastness to rubbing	ISO 105-X12: Wet 4 Dry 4
Flame retardant	AS/NZS 1530.3 BS 5852 part 1 IMO FTP Code 2010 Part 8 NFPA 260 US Cal. Bull. 117-2013 DIN 4102 B2 EN 1021-1/2 ASTM E84 Class A Unadhered IMO FTP Code 2010 Part 9 AS/NZS3837 class 3
Feature	STRETCH MATERIAL
Environment	GREENGUARD GOLD HPD EPD



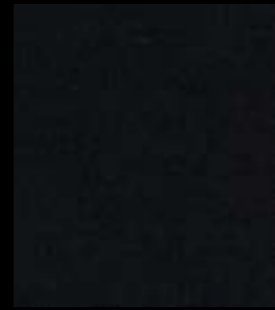
0113



0133



0183



0193



0203



0223



0373



443



0553



0573



0623



0663



0673



0683



0733



0753



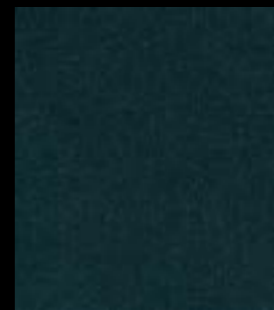
0783



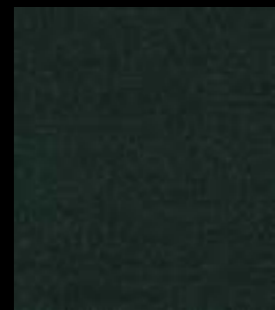
0873



0933



0963



0973

# Gentle 2

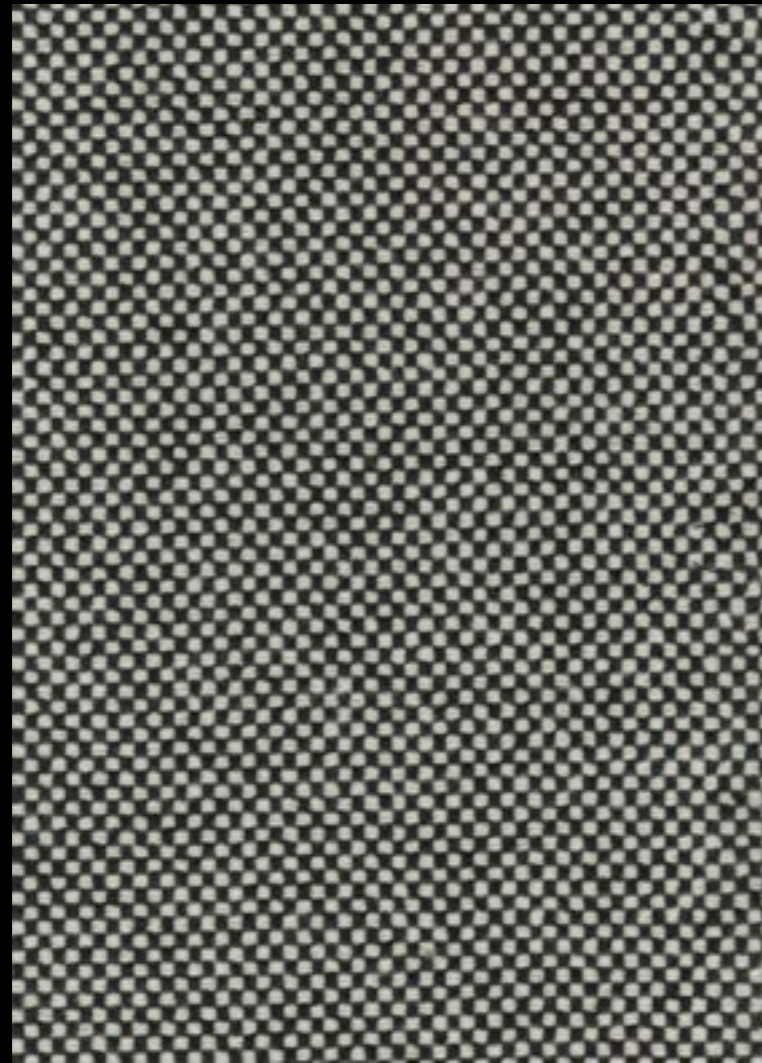
cat. Special

60% new wool, 20% nylon, 20% polyester, 2 mm foam  
Flame retardant - 90.000 Martindale



## Technical details

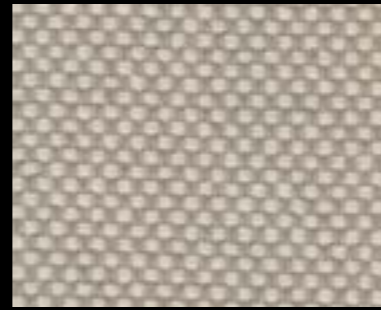
Composition	60% new wool, 20% nylon, 20% polyester, 2 mm foam
Weight	Gr./m <sup>2</sup> 970
Abrasion test	Martindale - ISO 12947-2: 90.000 rubs
Lightfastness	ISO 105-B02 6/7
Pilling	ISO 12945-2: 4/5
Fastness to rubbing	ISO 105-X12: Wet 5 / Dry 5
Flame retardant	BS 5852 Part 1 DIN 4102 B2 EN 1021-1/2 IMO FTP Code 2010:Part 8 US Cal. Bull. 117-2013
Environment	GREENGUARD CERTIFICATION GREENGUARD GOLD CERTIFICATION HPD EPD



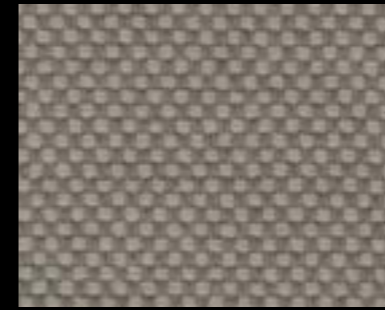
Sisu

cat. Special

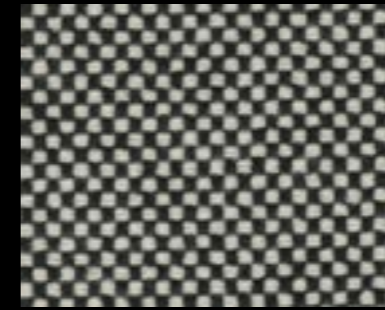
91% new Norwegian wool 8% new New Zealand wool 1%  
Flame retardant - 70.000 Martindale



0105



0125



0165



0175



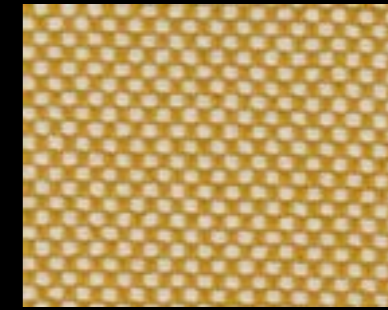
0195



0225



0375



0405



0525



0645



0655



0765



0775



0785



0805



0885



## Technical details

Composition	91% new Norwegian wool 8% new New Zealand wool 1% nylon
Weight	Gr./m <sup>2</sup> 1.100
Abrasion test	Martindale - ISO 12947-2: 70.000 rubs
Lightfastness	ISO 105-B02 7
Pilling	ISO 12945-2: 3/4
Fastness to rubbing	ISO 105-X12: Wet 4-5 / Dry 4-5
Flame retardant	AS/NZS 3837 class 2 ASTM E84 Class B Adhered ASTM E84 Class B Unadhered BS 5852 part 1 EN 1021-1/2 IMO FTP Code 2010 Part 8 NF D 60 013 UNI 9175 1IM US Cal. Bull. 117-2013
Environment	GREENGUARD CERTIFICATION GREENGUARD GOLD CERTIFICATION HPD EPD



0400



0060



0455



0437



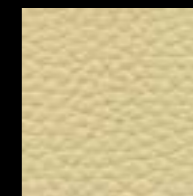
0062



0478



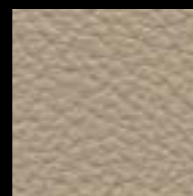
4023



0402



0472



0471



0439



0438



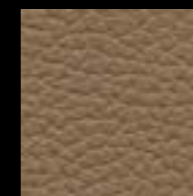
0424



0444



0441



0426



0425



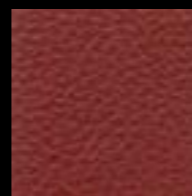
0452



0453



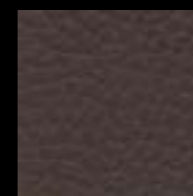
0454



0408



0456



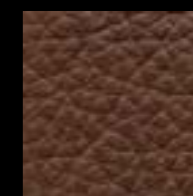
0063



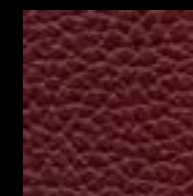
0427



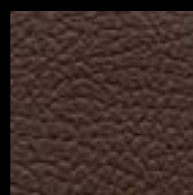
0403



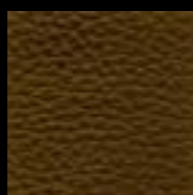
0446



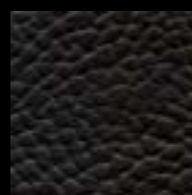
0428



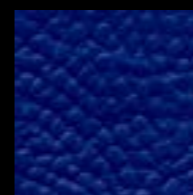
0421



0404



0448



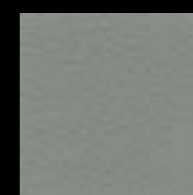
0451



0429



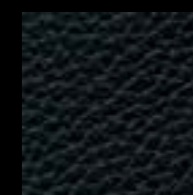
0449



0412



0431



0413

# Lux 1

cat. Lux

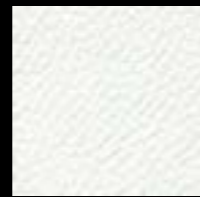
Pelle naturale - Natural leather  
Spessore - Thickness 1.3 / 1.5 mm



Lux 1

## Technical details

Origin	Raw hides
Place of origin	European
Thickness	1.3 / 1.5 mm
Lightfastness	ISO 105-B02: 7 blue scale
Tear strenght	ISO 3377-1: 89 N/mm
Fastness to rubbing	ISO 11640: Wet 250 cycles value 4/5 grey scale Dry 500 cycles value 4 grey scale
Flex crack resistance	5402: 50.000 cycles
Adhesion of finish	ISO 11644: 9,3 N/cm
Flame retardant	British Standard BS 5852 Part 1 (1979) Imo FTP:Part 8-Resolution A.652 (16) TB 117-A11@20132013 Cigarette Test (California)



0810



0811



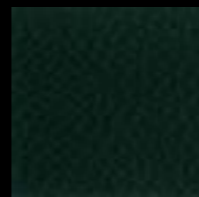
0812



0835



0830



0832



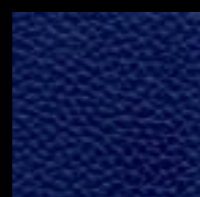
0839



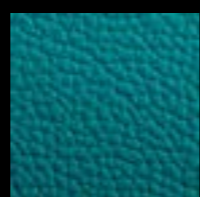
0843



0842



0856



0851



0855



0815



0826



0836



0837



0838



0881



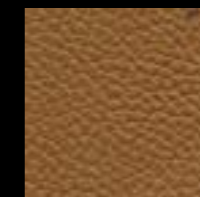
0818



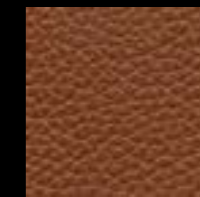
0819



0820



0823



0822



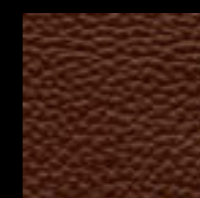
0824



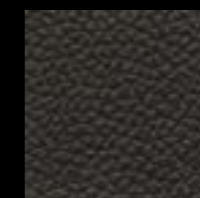
0847



0844



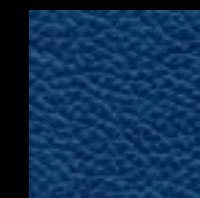
0845



0825



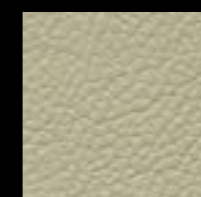
0852



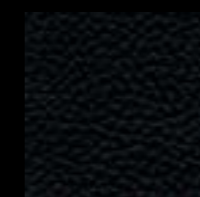
0853



0854



0827



0860



0859



0858



0864

# Lux 2

cat. Lux

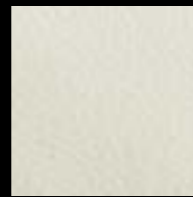
Pelle naturale - Natural leather  
Spessore - Thickness 0.9/1.0 mm



Lux 2

## Technical details

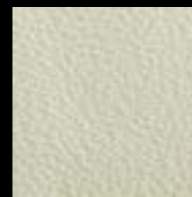
Origin	Raw hides
Place of origin	European
Thickness	0.9 / 1.0 mm
Lightfastness	ISO 105-B02: 8 blue scale
Tear strenght	ISO 3377-1: 42 N/mm
Fastness to rubbing	ISO 11640: Wet 250 cycles value 4/5 grey scale Dry 500 cycles value 4/5 grey scale
Flex crack resistance	ISO 5402: 50.000 cycles
Adhesion of finish	ISO 11644: 9 N/cm
Flame retardant	British Standard BS 5852 Part 1 (1979) Imo FTP:Part 8-Resolution A.652 (16) TB 117-A11@20132013 Cigarette Test (California)



0722



0764



0763



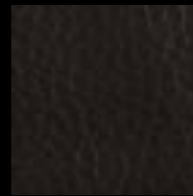
0771



0727



0769



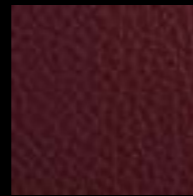
728



0778



0780



0715



0746



0747



0735



0720



0721



0724



0701



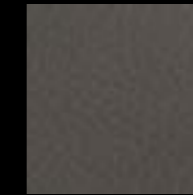
0766



0703



0725



0732



0704



0708



0734



0776



0775



0729



0782



0781



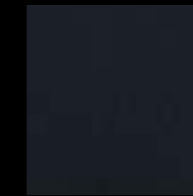
0709



0741



0737



0731



0755



0749



0730

# Imperial 1

cat. Imperial

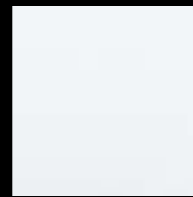
Pelle naturale - Natural leather  
Spessore - Thickness 1.3 / 1.5 mm



# Imperial 1

## Technical details

Origin	Raw hides
Place of origin	European
Thickness	1.3 / 1.5 mm
Lightfastness	ISO 105-B02: 8 blue scale
Tear strenght	ISO 3377-1: 121 N/mm
Fastness to rubbing	ISO 11640: Wet 250 cycles value 4 grey scale Dry 500 cycles value 4/5 grey scale
Flex crack resistance	5402: 50.000 cycles
Adhesion of finish	ISO 11644: 13.4 N/cm
Flame retardant	EN 1021-1/2 Cigarette & Match IMO FTP: Part 8-Resolution A.652 (16) Cigarette & Match TB 117-A11: Cigarette test (California)



0597



N040



N079



N059



0576



0504



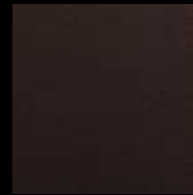
N047



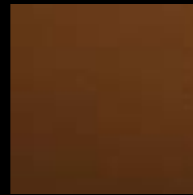
NH03



0505



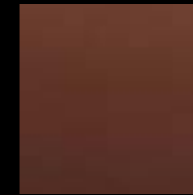
0510



0506



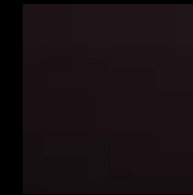
0507



0508



0509



0512



0574



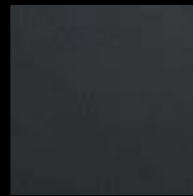
0563



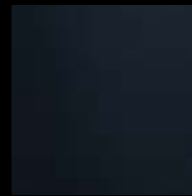
0564



N053



N041



0559



0569



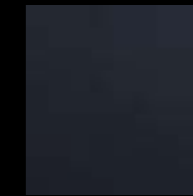
0565



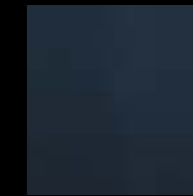
0566



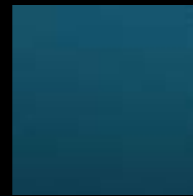
0560



0558



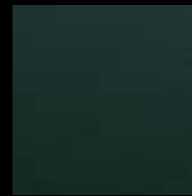
0557



0556



0543



0554



N092



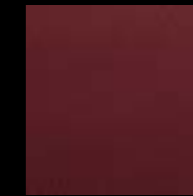
0522



0532



0533



0534



0541

# Imperial 2

cat. Imperial

Pelle naturale - Natural leather  
Spessore - Thickness 1.1 / 1.2 mm



Imperial 2

Technical details

Origin	Raw hides
Place of origin	European
Thickness	1.1 / 1.2 mm
Lightfastness	ISO 105-B02: 4 blue scale
Tear strenght	ISO 3377-1: 28 N/mm
Fastness to rubbing	ISO 11640: Wet 80 cycles value 4 grey scale Dry 500 cycles value 5 grey scale
Flex crack resistance	5402: 25.000 cycles
Adhesion of finish	ISO 11644: 7.5 N/cm
Flame retardant	EN 1021-1/2 Cigarette & Match IMO FTP: Part 8-Resolution A.652 (16) Cigarette & Match TB 117-A11: Cigarette test (California)

# Saddle leather / Cuoio



natural  
naturale



brown  
marrone



black  
nero

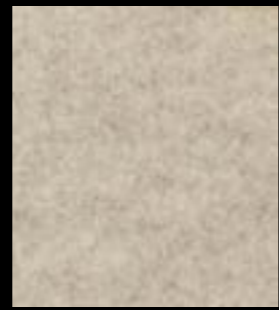






Jaak

90% WO – 10%PL  
Flame retardant - 80.000 Martindale



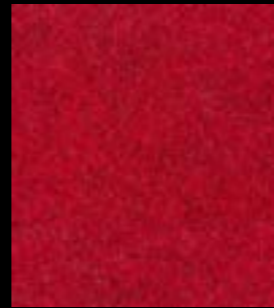
952



992



971



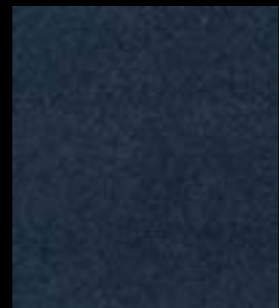
105



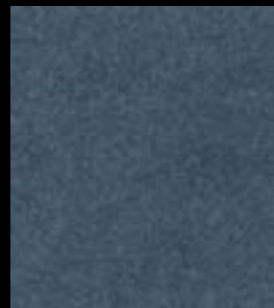
608



962



993



512



518



904



54



34



55



921



919



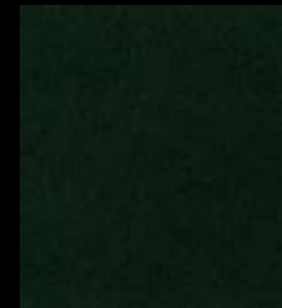
926



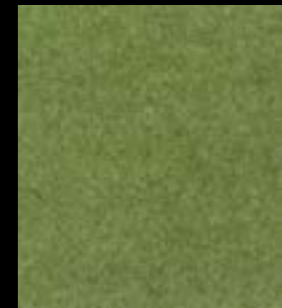
41



976



77



89



193



905



953



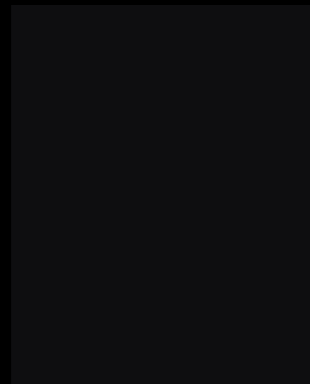
925



## Technical details

Composition	90% WO – 10%PL
Weight	Gr./m <sup>2</sup> 1085
Abrasion test	Martindale - ISO 12947-2: 80.000 rubs
Lightfastness	ISO 105-B02: 4/5
Pilling	ISO 12945-2: 4
Fastness to rubbing	ISO 105-X12: Wet 4/5 Dry 4/5
Flame retardant	UNI 9175/1987 classe 1IM EN 1021-1 EN 1021-2

# Metal/ finishes



ral 9005  
black  
nero



ral 9016  
white  
bianco



ral 3003  
red  
rosso



ral 5014  
blue  
blu



ivory  
avorio



mud  
fango



plum  
prugna



chocolate  
cioccolato



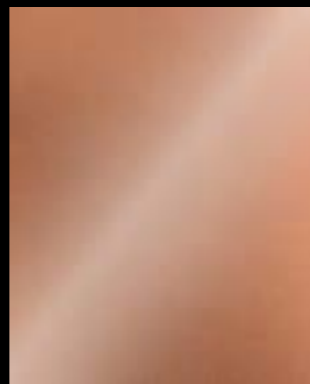
ral 7021  
dark grey  
grigio scuro



bronze  
bronzo



brass  
ottone



copper  
rame



pitch black  
nero pece



green tea  
tè verde



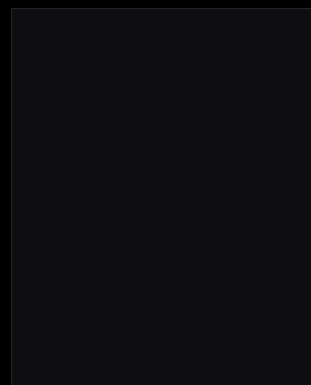
azure cornflower  
azzurro fiordaliso



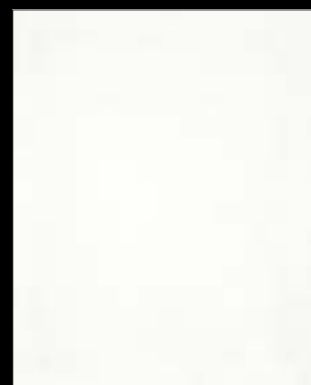


# Wood/ finishes

## LACQUERED WOODS LEGNI LACCATI



ral 9005  
black  
nero



ral 9016  
white  
bianco



natural beech  
faggio naturale



walnut stained beech  
faggio tinto noce

## NATURAL AND STAINED WOODS LEGNI NATURALI E TINTI



natural brushed oak  
rovere spazzolato naturale



white brushed oak  
rovere spazzolato bianco



graphite brushed oak  
rovere spazzolato grafite



wengé brushed oak  
rovere spazzolato wengé



natural ash  
frassino naturale



walnut-stained ash  
frassino tinto noce



graphite-stained ash  
frassino tinto grafite



wengé-stained ash  
frassino tinto wengé



