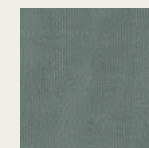
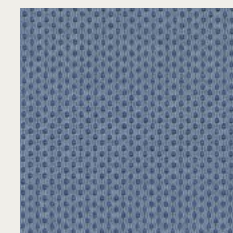
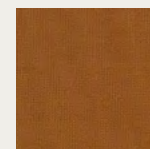
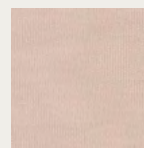
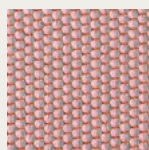
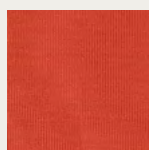
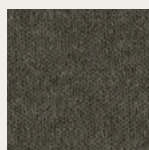
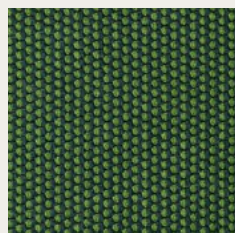


CAPSULE

FABRICS COLLECTION

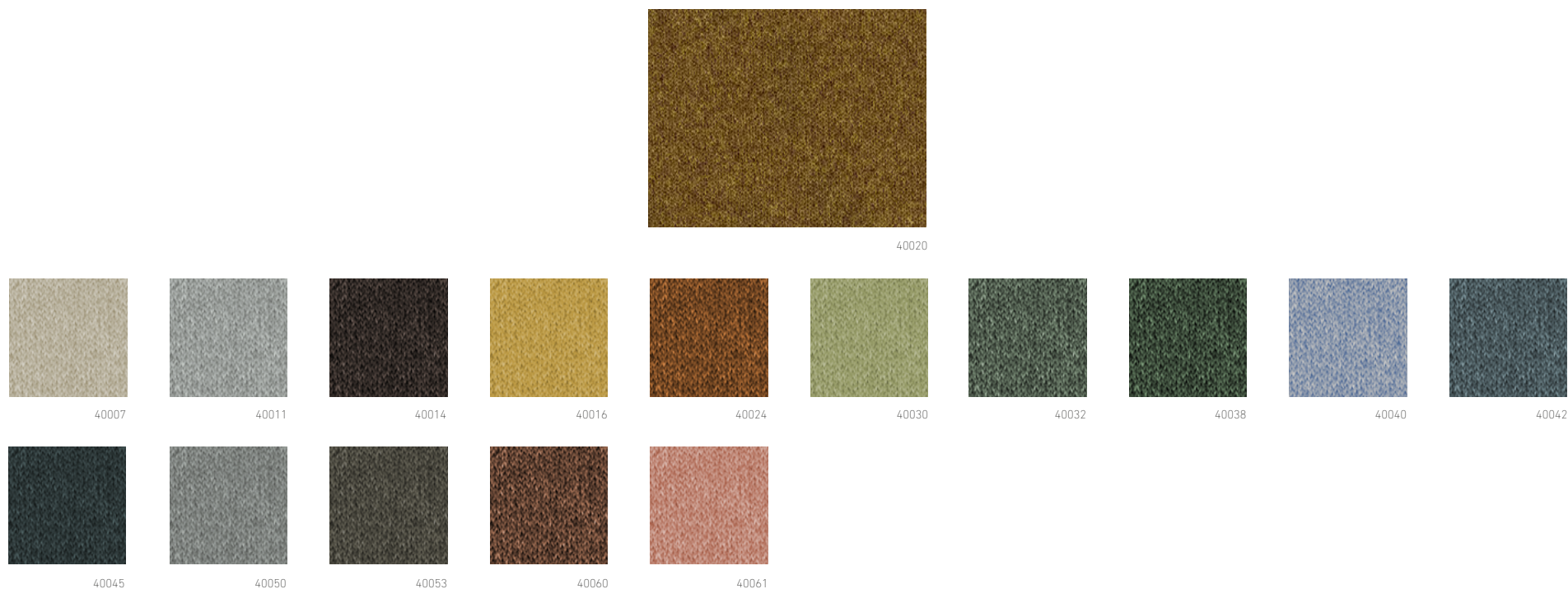


casala®

Nevada

FABRICS CAPSULE

FABRICS CAPSULE



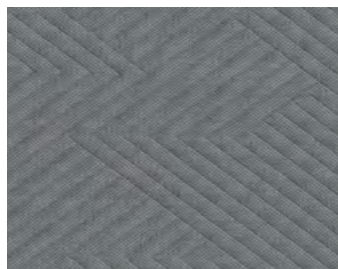
Technical specifications

COMPOSITION	100% PES FR	ASSESSMENT OF IGNITABILITY (CONTINUED)	
WIDTH	175	EN 1021 PART 1 / 2	PASS
LINEAR WEIGHT	840 GR/ML + 5%	UNI 9175 IM CLASE 3.IM	PASS
SEAM SLIPPAGE RESISTANCE (EN ISO 13936/2)	WARP 1,70 / WEFT 2,50	CAL TB 117:2013	PASS
ABRASION RESISTANCE		NFPA 260:2013	PASS
END POINT (A) FULLY WORN OFF (B) (EN ISO 12947/2)	50.000 (B)	IMO FTB 2010 PART 8 A 652 (16)	PASS
CHANGE ASPECT 3000C (EN ISO 12947/4)	3-4	LIGHTFASTNESS (EN ISO 105-B02)	6-7
PILLING RESISTANCE (EN ISO 12945/2)	4-5	COLOUR FASTNESS TO RUBBING (EN ISO 105-X12)	DRY 5 / WET 4-5
ASSESSMENT OF IGNITABILITY		DIMENSIONAL CHANGE IN DOMESTIC WASHING AND DRYING	
BS5852 SCHE. PART 4 SOURCE 0 / 1	PASS	(EN ISO 3759 / EN ISO 6330 / EN ISO 5077)	WARP -3% / WEFT -1,50%
BS7176 LOW HAZARD	PASS		

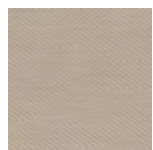
The colours in this publication may differ to the original product. We recommend requesting a product sample.
 Sample service and further information: WWW.CASALA.COM/SAMPLES



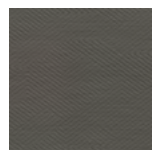
Mizmaze



0122



0212



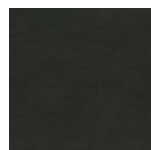
0252



0322



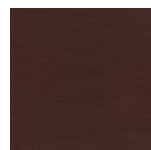
0342



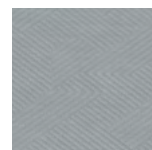
0392



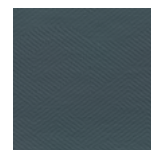
0562



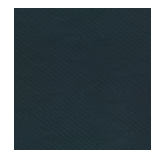
0682



0712



0762



0882



0962

FABRICS CAPSULE

FABRICS CAPSULE

The colours in this publication may differ to the original product. We recommend requesting a product sample.
Sample service and further information: WWW.KVADRAT.DK

Uniform Mélange



0453



0103



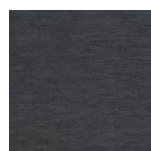
0123



0133



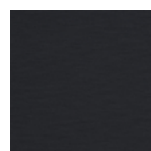
0153



0163



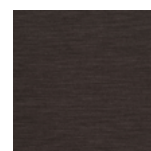
0183



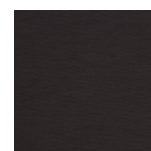
0193



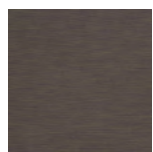
0263



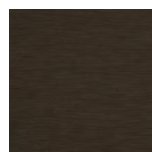
0283



0293



0333



0353



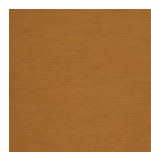
0363



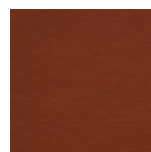
0413



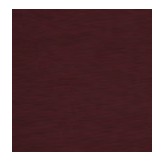
0433



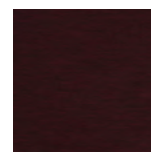
0463



0553



0583



0593



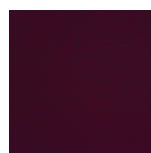
0623



0633



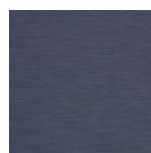
0653



0663



0683



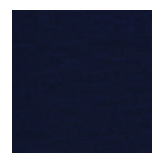
0723



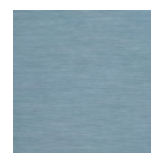
0753



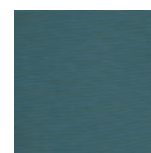
0763



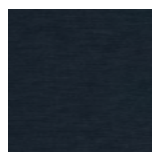
0793



0813



0833



0883



0913



0933



0963



0983



0993



0563

FABRICS CAPSULE

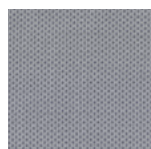
FABRICS CAPSULE

The colours in this publication may differ to the original product. We recommend requesting a product sample.
Sample service and further information: WWW.KVADRAT.DK

Plecto



0734



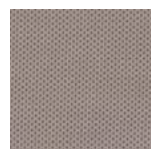
0114



0134



0184



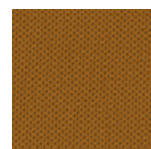
0224



0244



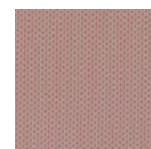
0284



0444



0564



0624



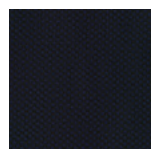
0654



0684



0784



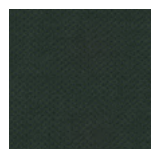
0794



0874



0934



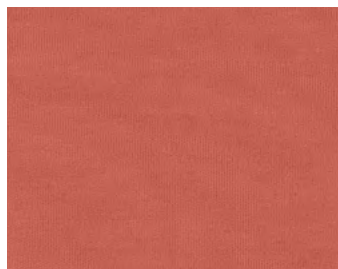
0984

FABRICS CAPSULE

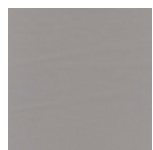
FABRICS CAPSULE

The colours in this publication may differ to the original product. We recommend requesting a product sample.
Sample service and further information: WWW.KVADRAT.DK

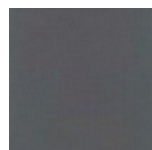
Planum



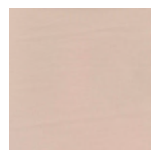
0521



0111



0141



0201



0241



0271



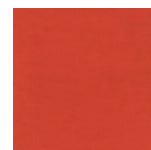
0351



0411



0441



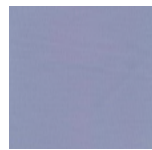
0551



0571



0681



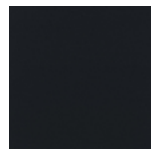
0711



0741



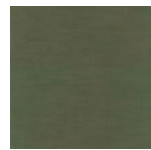
0751



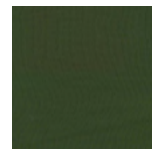
0791



0921



0941



0961



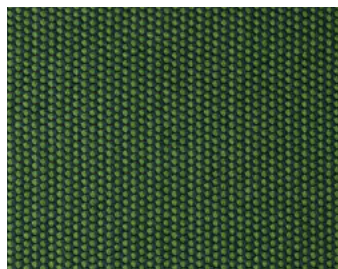
0971

FABRICS CAPSULE

FABRICS CAPSULE

The colours in this publication may differ to the original product. We recommend requesting a product sample.
Sample service and further information: WWW.KVADRAT.DK

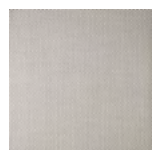
Drop



0961



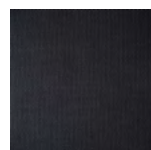
0101



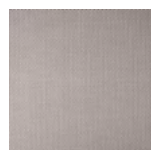
0121



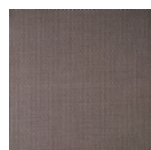
0151



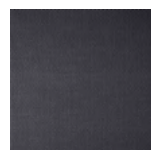
0191



0221



0261



0291



0421



0441



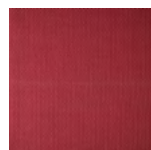
0461



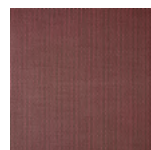
0621



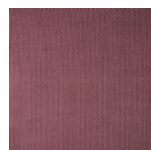
0641



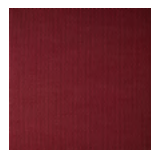
0651



0661



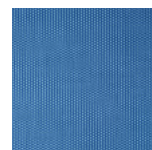
0671



0691



0721



0751



0761



0771



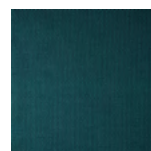
0791



0851



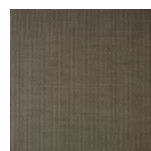
0871



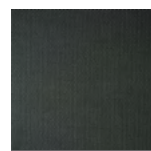
0891



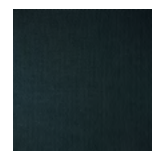
0921



0951



0971



0991

FABRICS CAPSULE

FABRICS CAPSULE

The colours in this publication may differ to the original product. We recommend requesting a product sample.
Sample service and further information: WWW.KVADRAT.DK

SHOWROOMS

Casala
Meubelen Nederland bv
Rolweg 10
4104 AVCulemborg
The Netherlands
+31 (0)345 51 73 88
info@casala.com

Design Post Amsterdam
Cruquiusweg 111m
1019 AG Amsterdam
The Netherlands
+31 (0)20 463 39 80
info@palau.nl

Casala
Objektmöbel GmbH
Magirusstraße 16
31867 Lauenau
Germany
+49 (0)5043 71 0
casala@casala.com

Casala Ltd
2 Sycamore Street
Clerkenwell, EC1Y 0SF
London
United Kingdom
+44 (0)20 3958 0058
sales@casala.com

Casala S.à.r.l.
54 rue du 19 Janvier
92380 Garches
France
+33 (0)1 47 10 02 22
contact@casala.com

www.casala.com

casala®