

TECHNO-POLYMER / TECNOPOLIMERO



05
Light blue / Azzurro



99
Lavender / Lavanda



98
Pale blue / Avio



34
Light blue / Azzurro



08
Blue / Blu



09
Dark Blue / Blu scuro



16
Indigo / Indaco



11
Night Blue / Blu notte



03
Light green / Verdino



42
Green / Verde



51
Sage green / Salvia



35
Lime



41
Green / Verde



25 Olive Green
Verde Oliva



23 Military green
Verde militare



24 Forest green
Verde foresta



36
Mustard / Senape



02
Yellow / Giallo



38
Saffron / Zafferano



07
Apricot / Albicocca



33
Orange / Arancione



20
Lobster / Aragosta



06
Red / Rosso



12
Brick / Mattone



26
Marsala



22
Bordeaux



01
Beige



54
Sand / Sabbia



18 Dusty Rose
Polvere Rosa



13
Brown / Marrone



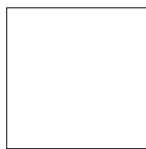
52
Turtledove / Tortora



55 Mineral Grey
Grigio Minerale



39
Brown / Marrone



00
White / Bianco



14
Pearl grey / Grigio perla



04
Grey / Grigio



21
Grey / Grigio



10
Black / Nero



46 Transp. green
Verde trasp.



45 Transp. red
Rosso trasp.



47 Transp. Amber
Ambra trasp.



44 Transparent
Trasparente

K - KING FABRIC / TESSUTO KING



6001

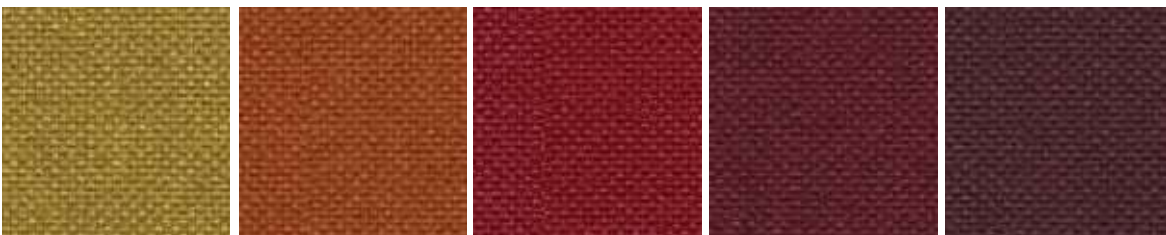
6091

6034

6052

7019

7022



3030

3082

4021

4032

5001



1033

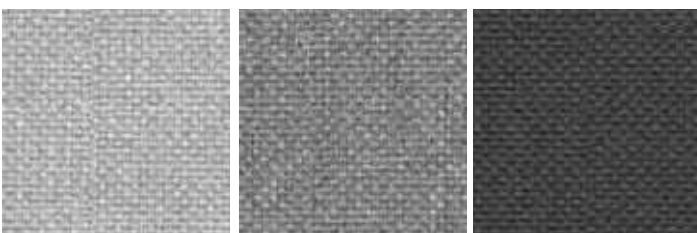
1008

2003

2007

1012

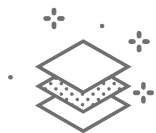
1025



8032

8006

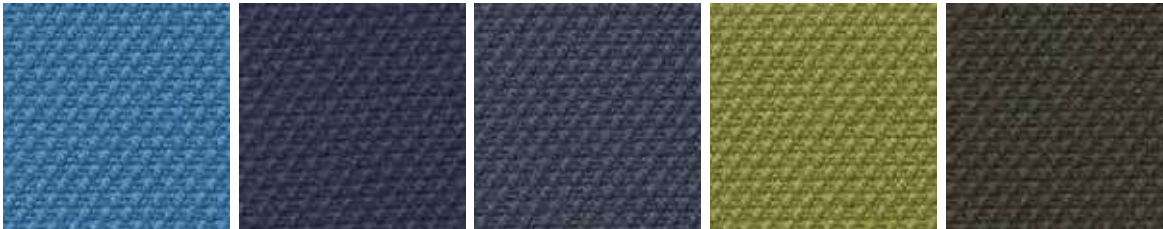
8011



- Composition: 100% POLYESTER - TREVIRA CS
- Abrasion: UNI EN ISO 12947-2 80.000 Cycle Martindale $\pm 10\%$
- Light Resistance-Xenotest: UNI EN ISO 105-B02 / 6 (tol from 5 to 8)
- Fire proof: UNI 9174 - 8456 Class C1, UNI 9175 Class 1, DIN 4102 Class B1, NF 92501-7 Class M1, NF D 60013, 11M (UNI 9175), Class AM18, EN 1021-1 & 2, BS Crib 5, BS 7176, Class Medium Hazard, EN 13773 Class 1, OENORM 3800-1 Class B1, Q1, TR1, California TB117, USA NFPA 701, USA NFPA 260, IMO A 652 (16) Part 8 Upholstery.
- Maintenance: Standard 60° C cotton cycle.

Visit www.fidivi.com for complete colours range / Visionate la completa gamma colori su www.fidivi.com

DK - KVADRAT FABRIC (STEELCUT2) / TESSUTO KVADRAT (STEELCUT2)



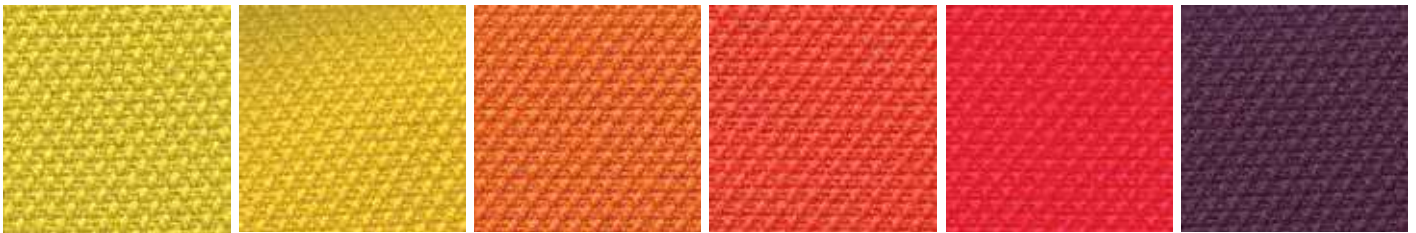
835

760

780

950

975



435

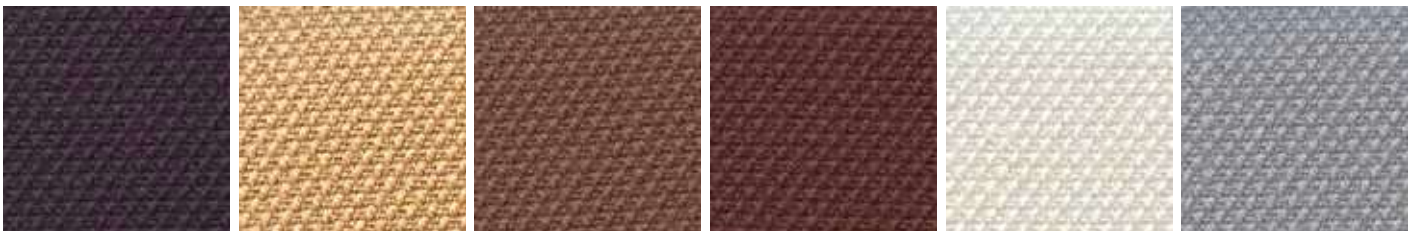
445

535

550

635

625



685

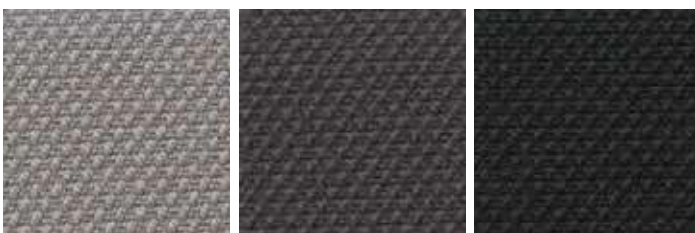
255

365

655

110

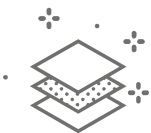
140



155

180

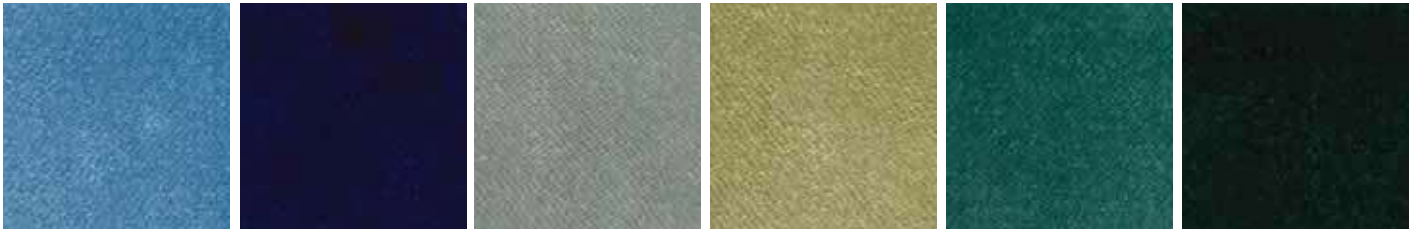
190



- Composition: 90% New wool worsted - 10% Nylon
- Abrasion: 100.000 Martindale rubs, EN ISO 12947
- Lightfastness: Note 5-7, ISO 105-B02
- AS/NZS 1530.3, BS 5852 crib 5 with treatment, BS 5852 part 1, IMO FTP Code 2010 Part 8, NF D 60 013, NFPA 260, SN 198 898 5.3 with treatment, UNI 9175 11M, US Cal. Bull. 117-2013, EN 1021-1/2, AS/NZS 3837 class 2, ÖNORM B1/Q1, ASTM E84 Class A Unadhered, ASTM E84 Class B Adhered.

Visit www.kvadrat.dk for complete colours range / Visionate la completa gamma colori su www.kvadrat.dk

S - SUPERB TREVIRA VELVET FABRIC / TESSUTO SUPERB TREVIRA VELLUTO



5130

5127

5131

5140

5134

5135



5106

5112

5118

5119

5114

5103



5144

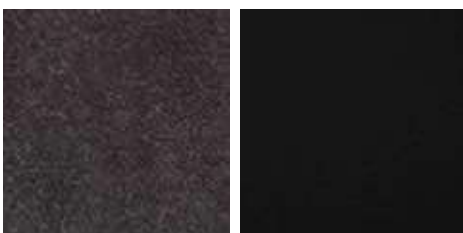
5143

5149

5142

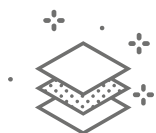
5145

5152



5151

5147



- Composition: 100% POLYESTER - TREVIRA CS
- Abrasion: UNI EN ISO 12947-2 100.000 Cycles
- Light Resistance-Xenotest: UNI EN ISO 105-B02 ≥5 Blue Scale
- Fire proof: UNI 8456 – 9174 classe 1, UNI 9175 classe 1IM, EN 1021-1, EN 1021-2, BS 5852 crib 5, DIN 4102 B1, NF P 92 503-507 M1, TB 117:2013, UNI EN 13773:2004 classe 1, NFPA 701:2015.
- Maintenance: Dust gently or pass the surface with a damp cloth.

Visit www.flukso.it for complete colours range / Visionate la completa gamma colori su www.flukso.it

B - BLAZER FABRIC / TESSUTO BLAZER



CUZ2Z

CUZ1E

CUZ86

CUZ47

CUZ1T

CUZ2R



CUZ3D

CUZ18

CUZ63

CUZ82

CUZ1N

CUZ1K

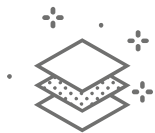


CUZ2X

CUZ62

CUZ1W

CUZ67



- Composition: 100% VIRGIN WOOL
- Abrasion: BS EN ISO 12497-2 65.000 Cycle Martindale
- Light Resistance-Xenotest: UNI EN ISO 105-B02 / 5
- Fire proof: BS EN 1021 Part 1, BS EN 1021 Part 2, BS 7176 Low Hazard, BS EN 13501-1:2007 Class D, NF D 60-013 AM18, UNI 9175:2010 Class 1IM, BS476 part 7 Class 1, ONORM B 3825, IMOFTP Code (part 8)
- Maintenance: Use the vacuum-cleaner.

Visit www.camirafabrics.com for complete colours range / Visionate la completa gamma colori su www.camirafabrics.com

GR - PROGARDEN FABRIC / TESSUTO PROGARDEN



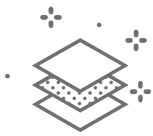
051
MEDITERRANEAN BLUE

026
PISTACHIO

028
OLIVE GREEN

012
LINEN

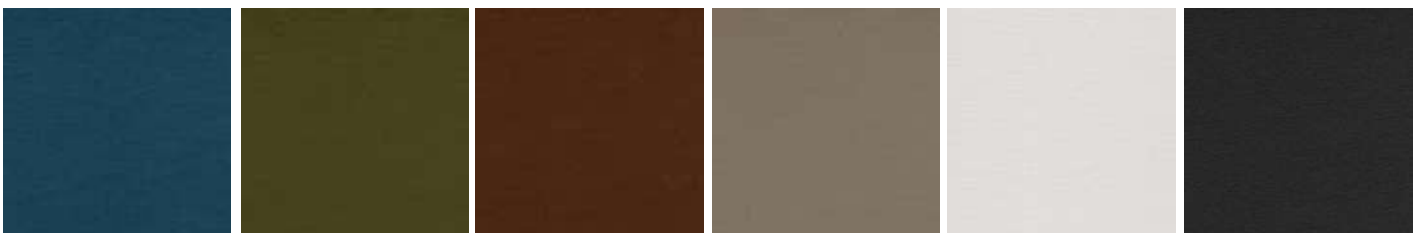
683
SLATE



- Composition: 100% yarn dyed acrylic
- Martindale (ISO 12947-2): 15.000 cycles
- Dimensional change after washing at 40°C and drying (warp/weft) (ISO 5077): ± 2%/0%
- Breaking strength (warp/weft) (ISO 13934-1): 200/70 daN - Elongation at break (warp/weft) (ISO 13934-1): 25%/25% - Tear strength (warp/weft) (ISO 13937-1): 7/3,7 daN
- Resistance to seam (warp/weft) (ISO 13935-1): 50/50 daN - Air permeability (ISO 9237): 65 l/m²/s
- Finishing: Water repellent Teflon/Scotchgard treatment, dirt repellent and anti-mould treatment
- Spray Test (ISO 4920): 4 out of 5 - UV Colour fastness (ISO 105 B02): 5/8 out of 8
- Colour fastness to weather (ISO 105 B04): 5/8 out of 8 - Colour fastness after washing at 40°C (ISO 105 C06): 5 out of 5

Visit www.giovanardi.com for complete colours range / Visionate la completa gamma colori su www.giovanardi.com

SX - SILVERTEX FABRIC / TESSUTO SILVERTEX



3066
BALTIC

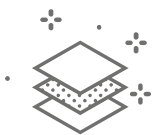
5020
BASIL

1014
UMBER

0002
SANDSTONE

4004
ICE

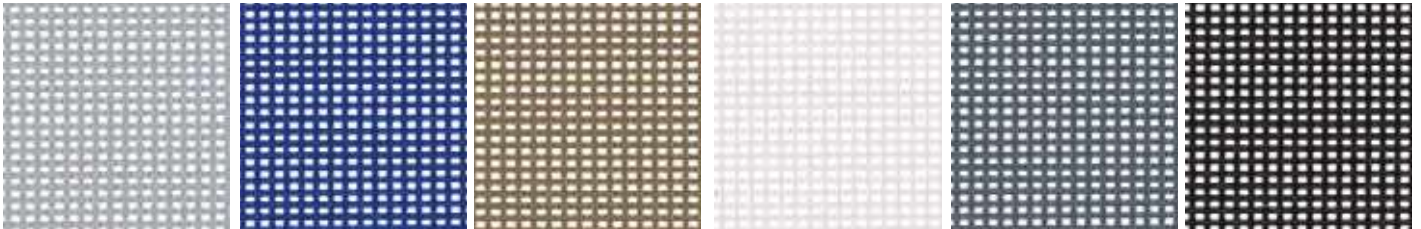
4003
GRAPHITE



- Composition: 100% Vinyl / Polyester Backing
- Abrasion: >300.000 cycles Martindale (EN ISO 12947:1999 Part 2)
- UV Resistance: ISO 105 B04 ≥ 4/5 (Grey Scale), ISO 105 B02 ≥ 7/8 (Blue Wool Scale)
- Flame Retardancy: EU: EN 1021 Part 1 & 2 DE: DIN 4102 B2 ECE Regulation No.118:03 (R118.02 Annexes 6, 7 & 8), ES: UNE 23.727-90 1R/M.2, FR: NF P 92-503/M2, IT: UNI 9175 (1987) / UNI 9175/FA1 (1994) Classe 1.1M (UNO I EMME), AT: ÖNORM B 3825, Gruppe 1 - Schwerbrennbares Verhalten, AT: ÖNORM A 3800 Teil 1, Qualmbildungsklasse Q1 - schwachqualmend, IMO FTP 2010 Code MSC.307 (88) Part 8 3.1 & 3.2, (MED) Marine Equipment Directive (in its current valid version), EN 71-2:2006+A1:2007 - Safety of Toys - Parte 2: Flammability, US: CAL TB 117-2013, Section E, FMVSS 302, FAR 25/853

Visit www.spradling.eu for complete colours range / Visionate la completa gamma colori su www.spradling.eu

R - MESH FABRIC / TESSUTO RETE



R08

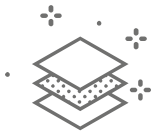
R10

R09

R01

R03

R02



- Composition: Polyvinyl 70% - Polyester 30%
- Warp Tensile Strength: 310Kg/5cm
- Weft Tensile Strength: 270Kg/5cm
- Fire retardant on request

Visit www.plastitex.com for complete colours range / Visionate la completa gamma colori su www.plastitex.com

MG - MAGLIA VINYL FABRIC / TESSUTO MAGLIA VINILE



0003

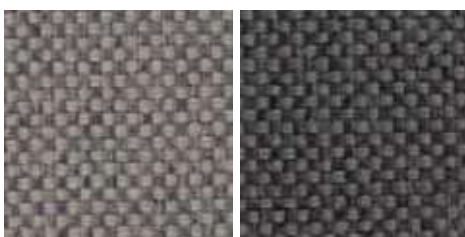
0406

4203

5001

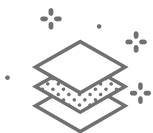
6025

4537



1702

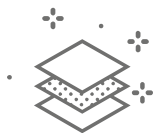
6016



- Composition: Vynil 100%
- Abrasion: >100.000 cycles Martindale (EN ISO 12947:1999 Part 2)
- Fire Proof: EN 1021 Part 1 & 2, UNE 23.727-90 1R/M.2, NF P 92-503/M2, DIN 4102 B2, UNI 9175 (1987) / UNI 9175/FA1 (1994) Classe 1.IM (UNO I EMME), ÖNORM B 3825, Gruppe 1 - Schwerbrennbares Verhalten, ÖNORM A 3800 Teil 1, Qualmbildungsklasse Q1 - schwachqualmend, IMO FTP 2010 Code MSC.307 (88) Part 8 3.1 & 3.2, FMVSS 302, US: FAR 25/853, (MED) Marine Equipment Directive (in its current valid version), ECE R118.02 (replaces Directive 95/28/CE) Annexes 6, 7 & 8, EN 71-2:2006+A1:2007 - Safety of Toys - Parte 2: Flammability, CAL TB 117-2013, Section E
- Light Resistance: UV-Resistance XENOTEST DIN 54004/ NTC 1479

Visit www.spradling.eu for complete colours range / Visionate la completa gamma colori su www.spradling.eu

E - SIMIL LEATHER AUREA / ECOPELLE AUREA



- Composition: 72% PVC - 3% PU - 25% COTTON
- Abrasion: EN ISO 5470-2 100.000 Cycle Martindale
- Light Resistance-Xenotest: UNI EN ISO 105-B02 / 6
- Fire proof: UNI 9175 classe 1IM, EN 1021-1, EN 1021-2, BS 5852-1 cigarette test, BS 5852-1 match test BS 5852 crib 5, TB 117:2013, IMO res. A.652(16)
- Maintenance: Dust gently or pass the surface with a damp cloth.

Visit www.flukso.it for complete colours range / Visionate la completa gamma colori su www.flukso.it