

Panarea

Outdoor

Composizione / Composition / Composition
100% PP

Peso / Weight / Poids
200 gr/m²

Resistenza alla luce / Light fastness / Résistance à la lumière
7/8 (ISO 105 B02)

Resistenza all'abrasione / Abrasion resistance / Résistance à l'abrasion
> 40.000 Martindale

Resistenza al fuoco / Fire resistance / Résistance au feu
NFPA 260 Class 1



Outdoor Guarantee Eco-friendly



PO 100



PO 111



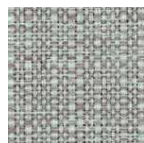
PO 300



PO 400



PO 405



PO 600



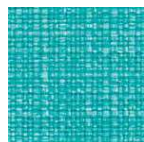
PO 607



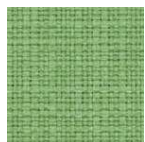
PO 702



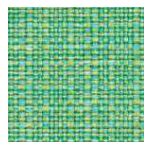
PO 703



PO 707



PO 800



PO 801

Basic

Composizione / Composition / Composition
100% PP

Peso / Weight / Poids
390 gr/m²

Resistenza alla luce / Light fastness / Résistance à la lumière
7 (ISO 105 B02)

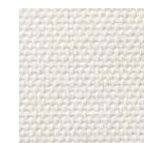
Resistenza all'abrasione / Abrasion resistance / Résistance à l'abrasion
16.000 Martindale

Resistenza al fuoco / Fire resistance / Résistance au feu
BS 5852 Part 1 - Cigarette Test - PASS

EN 1021-1 - Cigarette Test - PASS
CA Tech. Bull. 117:2013 / NFPA 260 - Cigarette Test - PASS



Outdoor Eco-friendly



B Nata



B Anthracite



B Deep blue



B Turquoise



B Aquamarine



B Forest



B Toffee



B Khaki



B Brown



B Yellow



B Orange



B Red

Adriatica

Libeccio

Composizione / Composition / Composition
100% PP

Peso / Weight / Poids
415 gr/m²

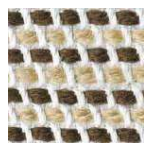
Resistenza alla luce / Light fastness / Résistance à la lumière
7/8 (ISO 105 B02)

Resistenza all'abrasione / Abrasion resistance / Résistance à l'abrasion
> 35.000 Martindale

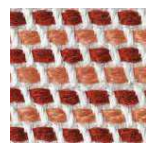
Resistenza al fuoco / Fire resistance / Résistance au feu
California TB 117-2013; NFPA 260 Class 1



Outdoor Guarantee Standard 100



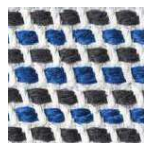
AL 100



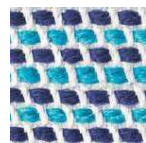
AL 300



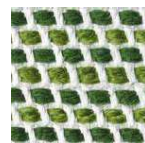
AL 400



AL 700

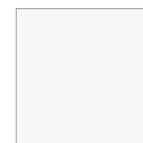


AL 709



AL 800

Metal



Signal white RAL9003



Traffic grey RAL7043



Pale green RAL6021



Gentian blue RAL5010



Golden yellow RAL1004



Pure red RAL3028

Adriatica

Maestrale

Composizione / Composition / Composition
100% PP

Peso / Weight / Poids
380 gr/m²

Resistenza alla luce / Light fastness / Résistance à la lumière
7/8 (ISO 105 B02)

Resistenza all'abrasione / Abrasion resistance / Résistance à l'abrasion
> 40.000 Martindale

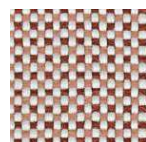
Resistenza al fuoco / Fire resistance / Résistance au feu
California TB 117-2013; NFPA 260 Class 1



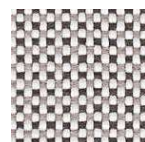
Outdoor Guarantee Standard 100



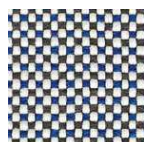
AM 100



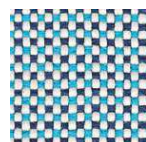
AM 300



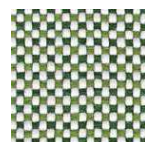
AM 400



AM 700



AM 709



AM 800