

## TECHNO-POLYMER / TECNOPOLIMERO



**05**  
Light blue / Azzurro



**99**  
Lavender / Lavanda



**98**  
Pale blue / Avio



**34**  
Light blue / Azzurro



**08**  
Blue / Blu



**09**  
Dark Blue / Blu scuro



**16**  
Indigo / Indaco



**11**  
Night Blue / Blu notte



**03**  
Light green / Verdino



**42**  
Green / Verde



**51**  
Sage green / Salvia



**35**  
Lime



**41**  
Green / Verde



**25** Olive Green  
Verde Oliva



**23** Military green  
Verde militare



**24** Forest green  
Verde foresta



**36**  
Mustard / Senape



**02**  
Yellow / Giallo



**38**  
Saffron / Zafferano



**07**  
Apricot / Albicocca



**33**  
Orange / Arancione



**20**  
Lobster / Aragosta



**06**  
Red / Rosso



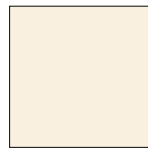
**12**  
Brick / Mattone



**26**  
Marsala



**22**  
Bordeaux



**01**  
Beige



**54**  
Sand / Sabbia



**18** Dusty Rose  
Polvere Rosa



**13**  
Brown / Marrone



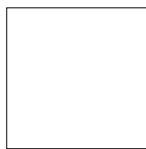
**52**  
Turtledove / Tortora



**55** Mineral Grey  
Grigio Minerale



**39**  
Brown / Marrone



**00**  
White / Bianco



**14**  
Pearl grey / Grigio perla



**04**  
Grey / Grigio



**21**  
Grey / Grigio



**10**  
Black / Nero



**46** Transp. green  
Verde trasp.



**45** Transp. red  
Rosso trasp.



**47** Transp. Amber  
Ambra trasp.



**44** Transparent  
Trasparente

## K - KING FABRIC / TESSUTO KING



6001

6091

6034

6052

7019

7022



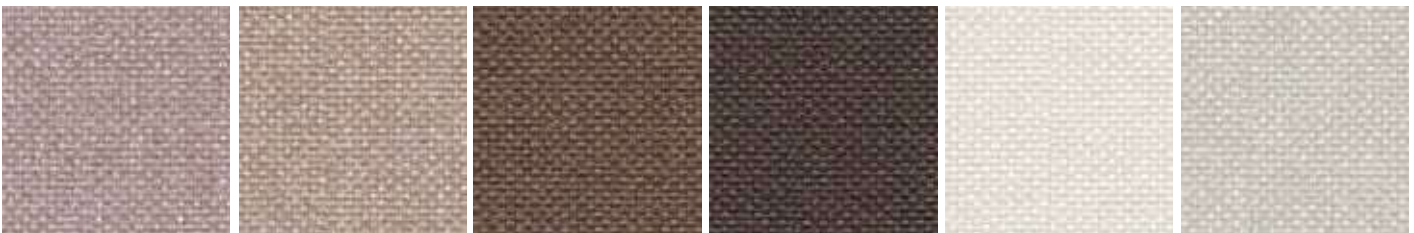
3030

3082

4021

4032

5001



1033

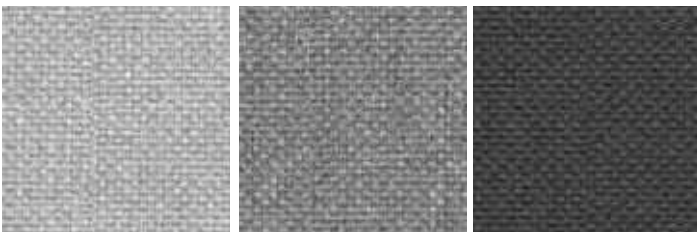
1008

2003

2007

1012

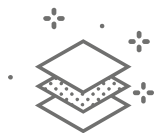
1025



8032

8006

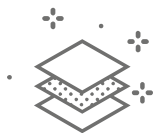
8011



- Composition: 100% POLYESTER - TREVIRA CS
- Abrasion: UNI EN ISO 12947-2 80.000 Cycle Martindale  $\pm 10\%$
- Light Resistance-Xenotest: UNI EN ISO 105-B02 / 6 (tol from 5 to 8)
- Fire proof: UNI 9174 - 8456 Class C1, UNI 9175 Class 1, DIN 4102 Class B1, NF 92501-7 Class M1, NF D 60013, 11M (UNI 9175), Class AM18, EN 1021-1 & 2, BS Crib 5, BS 7176, Class Medium Hazard, EN 13773 Class 1, OENORM 3800-1 Class B1, Q1, TR1, California TB117, USA NFPA 701, USA NFPA 260, IMO A 652 (16) Part 8 Upholstery.
- Maintenance: Standard 60° C cotton cycle.

Visit [www.fidivi.com](http://www.fidivi.com) for complete colours range / Visionate la completa gamma colori su [www.fidivi.com](http://www.fidivi.com)

## E - SIMIL LEATHER AUREA / ECOPELLE AUREA



- Composition: 72% PVC - 3% PU - 25% COTTON
- Abrasion: EN ISO 5470-2 100.000 Cycle Martindale
- Light Resistance-Xenotest: UNI EN ISO 105-B02 / 6
- Fire proof: UNI 9175 classe 1IM, EN 1021-1, EN 1021-2, BS 5852-1 cigarette test, BS 5852-1 match test BS 5852 crib 5, TB 117:2013, IMO res. A.652(16)
- Maintenance: Dust gently or pass the surface with a damp cloth.

Visit [www.flukso.it](http://www.flukso.it) for complete colours range / Visionate la completa gamma colori su [www.flukso.it](http://www.flukso.it)