

rivestimenti  
upholstery

**2023**

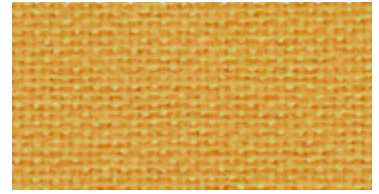
**Diemme.**



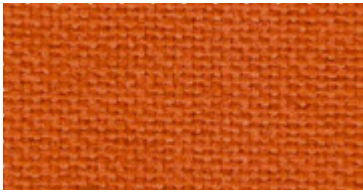
9110



2024



3090



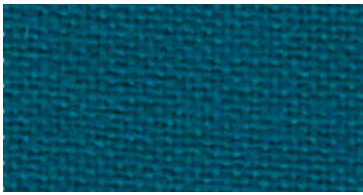
3036



4027



4017



6091



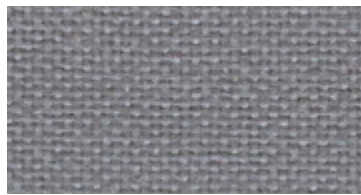
6095



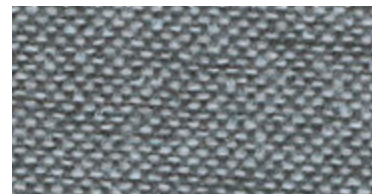
6098



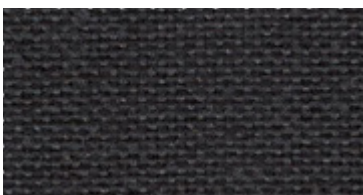
7025



8078



9804



8017



9281



8033

# JET / CAT. F

## Composizione

100% Poliestere - Trevira CS®

## Peso

gr./m<sup>2</sup> 260 ± 5%

## Altezza

cm 140

## Abrasione - Test Martindale

UNI EN ISO 12947/2 65.000 cicli

## Solidità alla luce

UNI EN ISO 105-B02 6

## Pulizia

Non spazzolare e usare con regolarità l'aspirapolvere.

## Lavaggio



## Omologazioni

Le proprietà ignifughe sono intrinseche nella fibra e non dovute a trattamenti aggiuntivi.

**I** Classe 1

**F** Classe M1

**D** Classe B1 norme DIN 4102

**UK** Crib 5

**EN** EN 1021/1-2

## Differenze colore

Leggere differenze di colore fra una bagno e l'altro sono da considerarsi normali.

## Composition

100% Polyester - Trevira CS®

## Weight

gr./m<sup>2</sup> 260 ± 5%

## Width

cm 140

## Abrasion test - Martindale

UNI EN ISO 12947/2 65000 turns

## Lightfastness

UNI EN ISO 105-B02 6

## Cleaning

Do not brush. Only use a vacuum-cleaner regularly.

## Washing



## Approvals

The flame-retardant properties are inherent to the fibre and they are not due to additional treatments.

**I** Class 1

**F** Class M1

**D** Class B1 standards DIN 4102

**UK** Crib 5

**EN** EN 1021/1-2

## Colour differences

Slight differences between colour batches have to be considered normal.

**Diemme.**

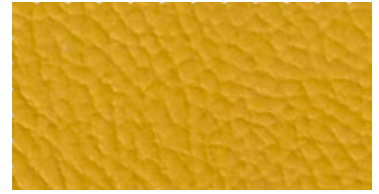
**PLANET - SURROUND / CAT.F**



6 / 101



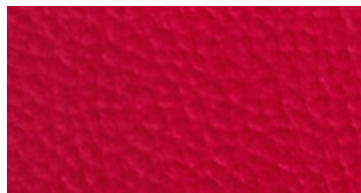
4008 / 109



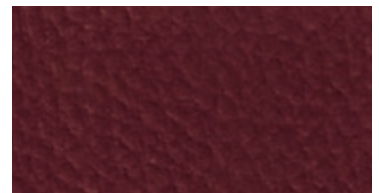
71 / 105



120



680 / 136



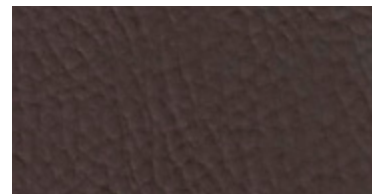
726 / 135



1110 / 110



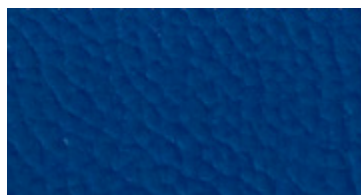
1304 / 126



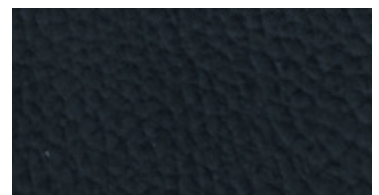
119



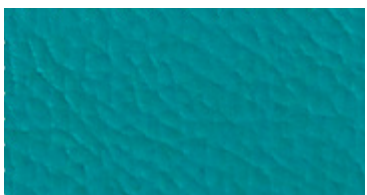
106



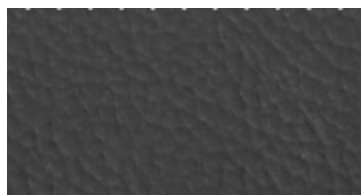
4975 / 116



4947 / 131



114



1984 / 125



991 / 133

# PLANET - SURROUND / CAT. F

L'articolo è trattato con prodotto antibatterico, è anallergico e impermeabile.

The article contains antibacterial agent, it is anti-allergic and waterproof.

## Composizione

87,5% PVC - 12,5% COT

## Peso

640 g/m<sup>2</sup>

## Altezza

140 cm

## Resistenza all'abrasione - Test Martindale

ISO 5470-2/2003 100.000 cicli

## Solidità alla luce

UNI EN ISO 105-B02 6-7

## Pulizia

Spolverare delicatamente e in caso di macchie lievi passare la superficie con un panno umido o con una soluzione di detergente neutro, risciacquando con acqua, senza strizzare. Per le macchie localizzate e più ostinate (olio, grasso, cosmetici, inchiostri, caffè, liquori, chewing-gum ecc.) si consiglia di seguire le seguenti istruzioni: disciogliere tempestivamente la macchia con alcol etilico diluito (liquido incolore) in acqua al 20%, tamponare e trattare successivamente con una soluzione di detergente neutro, risciacquare bene.

I colori chiari, non devono essere messi a contatto con tessuti e capi d'abbigliamento trattati con coloranti non fissati, o con scarse solidità di tintura, onde evitare macchie ed aloni di coloranti di cui non possiamo garantire la pulitura.

## Omologazioni

**I** UNI 9175 classe 1 IM

**F** NF P 92-503: M2

**UK** BS 5852 sect.11 crib 5

**D** DIN 4201-1: B2

**AT** OeNORM A3800-1: Q1

**USA** TB 117:2013

**EN** EN 1021-2

## Differenze colore

Leggere differenze di colore fra una partita e l'altra sono da considerarsi normali.

## Composition

87,5% PVC - 12,5% COT

## Weight

640 g/m<sup>2</sup>

## Width

140 cm

## Abrasion test - Martindale test

ISO 5470-2/2003 100.000 cycles

## Lightfastness

UNI EN ISO 105-B02 6-7

## Cleaning

Dust gently and in case of light stains pass the surface with a damp cloth or a neutral detergent, rinse with water without squeezing. The following instructions are recommended for small located and more obstinate stains (oil, fat, cosmetics, ink, coffee, liquor, chewing-gum etc.): dissolve immediately with clear ethylic alcohol diluted in water to 20%, dab and then treat with a neutral detergent solution. Rinse abundantly.

To avoid permanent stains, the lighter colours of the article should not be brought into contact with textiles and clothing coloured with unfixed dyes. We cannot guarantee the ability to remove unknown dyes from light coloured product.

## Approvals

**I** UNI 9175 classe 1 IM

**F** NF P 92-503: M2

**UK** BS 5852 sect.11 crib 5

**D** DIN 4201-1: B2

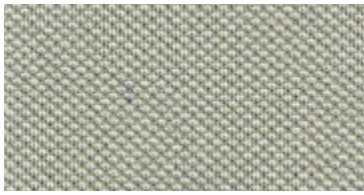
**AT** OeNORM A3800-1: Q1

**USA** TB 117:2013

**EN** EN 1021-2

## Colour differences

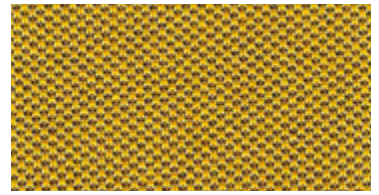
Slight color differences between one lot and another have to be considered within commercial tolerance.



1006



2519



3530



4030



4566



4528



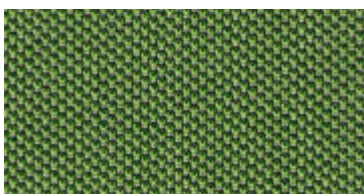
4079



7504



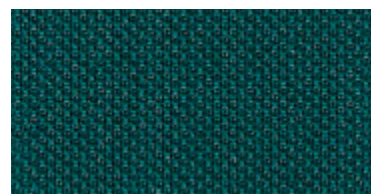
6512



7521



7526



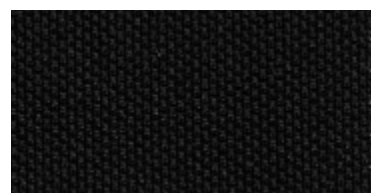
7033



8032



8504



8033

# ONE / CAT. G

## Composizione

100% Poliestere Riciclato



## Peso

350 ± 5% g/m<sup>2</sup>

## Altezza

150 ± 2% cm

## Abrasione - Test Martindale

UNI EN ISO 12947-2 100.000 cicli ± 10%

## Solidità Luce

UNI EN ISO 105-B02 6 (scale 5-8)

## Pulizia

Aspirare regolarmente. Pulizia a secco professionale, in alternativa pulire con un panno umido.

## Lavaggio



## Omologazioni

**I** UNI 9175 Classe 11M

**USA** California TB 117

**UK** BS 7176 Medium Hazard

**UK** BS 5852 Crib 5

**EN** 1021-1 Part. 1-2

## Differenze colore

Leggere differenze di colore fra un bagno e l'altro sono da considerarsi normali.

## Composition

100% Recycled Polyester



## Weight

350 ± 5% g/m<sup>2</sup>

## Width

150 ± 2% cm

## Abrasion - Test Martindale

UNI EN ISO 12947-2 100.000 turns ± 10%

## Lightfastness

UNI EN ISO 105-B02 6 (scale 5-8)

## Cleaning

Vacuum regularly. Professionally dry clean or wipe clean with a damp cloth.

## Washing



## Approvals

**I** UNI 9175 Class 11M

**USA** California TB 117

**UK** BS 7176 Medium Hazard

**UK** BS 5852 Crib 5

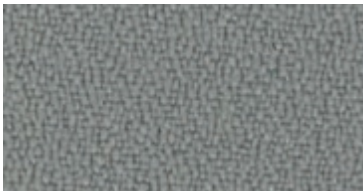
**EN** 1021-1 Part. 1-2

## Colour differences

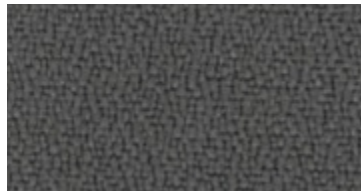
Slight differences between colour batches have to be considered normal.

**Diemme.**

**BINGO ELAST - MIRAGE / CAT. G**



629



625



651



53



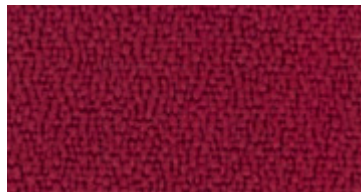
120



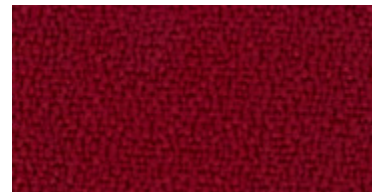
231



386



173



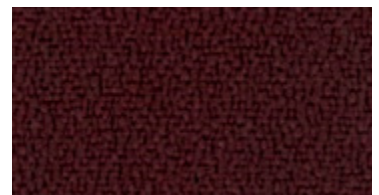
236



380



426



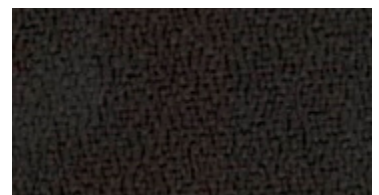
234



331



496



573



# BINGO ELAST - MIRAGE / CAT. G

## Composizione

100% Poliestere FR - Trevira CS

## Peso

gr./mtl. 490 ± 10%

## Altezza

cm. 140 ± 2%

## Abrasione - Test Martindale

UNI EN ISO 12947:2000 100.000 cicli ± 20%

## Solidità alla luce

Xenotest UNI EN ISO 105 B02 5 ± 1

## Pulizia

Non spazzolare e usare con regolarità l'aspirapolvere

## Lavaggio



## Omologazioni

**I** Classe 1

**F** Certificato M1

**D** B1 DIN 4102

**UK** BS 5852 Crib 5

**EN** 1021-1 Part. 1-2

## Differenze colore

Leggere differenze di colore fra una partita e l'altra sono da considerarsi normali.

## Composition

100% Polyester FR - Trevira CS

## Weight

gr.lm. 490 ± 10%

## Width

cm. 140 ± 2%

## Abrasion test - Martindale Test

UNI EN ISO 12947-2000 100.000 turns ± 20%

## Lightfastness

Xenotest UNI EN ISO 105 B02 5 ± 1

## Cleaning

Do not brush and use the vacuum-cleaner regularly

## Lavaggio



## Approvals

**I** Class 1

**F** Certificate M1

**D** B1 DIN 4102

**UK** BS 5852 Crib 5

**EN** 1021-1 Part. 1-2

## Differenze colore

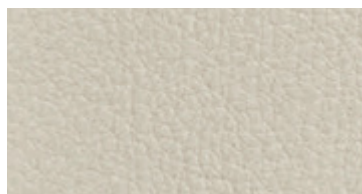
Slight differences between colour batches have to be considered normal.

# Diemme.

# CUBE / CAT. G



2000



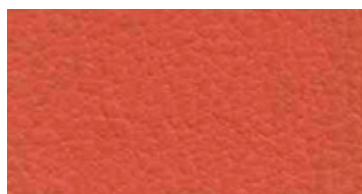
2003



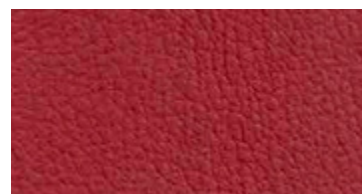
2105



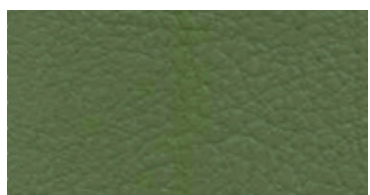
2007



2006



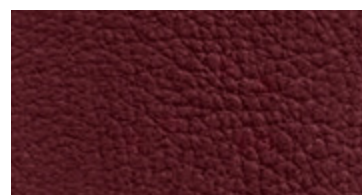
2005



2009



2008



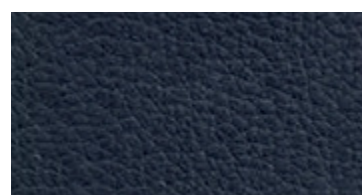
2004



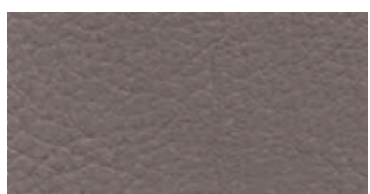
2017



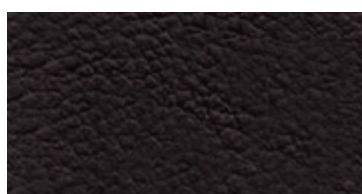
2002



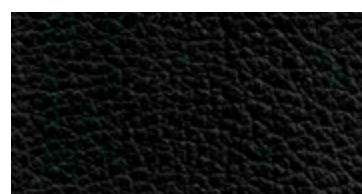
2011



2026



2028



2001

# CUBE / CAT. G

## Composizione

69% PVC 1% PU 30% COT/PES

## Peso

gr./m<sup>2</sup> 520

## Spessore

mm. 0,90

## Altezza

cm. 140

## Abrasione - Test Martindale

ISO 12947 (9kpa) 50.000 cicli

## Solidità alla luce

UNI EN ISO 105- B02 6

## Pulizia

Spolverare delicatamente e in caso di macchie lievi passare la superficie con un panno umido o con una soluzione di detergente neutro, risciaquando con acqua, senza strizzare. Lasciare asciugare evitando l'esposizione diretta alla luce del sole. Per le macchie localizzate e più ostinate, discogliere tempestivamente la macchia con alcool etilico diluito in acqua al 20%, tamponare e trattare successivamente con una soluzione di detergente neutro, risciaquare bene.

## Omologazioni

**I** UNI 9175 classe 1 IM

**UK** BS 5852-1 part I

**USA** TB 117:2013

**EN** EN 1021-2

## Differenze colore

Leggere differenze di colore fra una partita e l'altra sono da considerarsi normali.

## Composition

69% PVC 1% PU 30% COT/PES

## Weight

gr./m<sup>2</sup> 520

## Thickness

mm. 0.90

## Width

cm. 140

## Abrasion test - Martindale Test

ISO 12947 (9kpa) 50.000 turns

## Lightfastness

UNI EN ISO 105-B02 6

## Cleaning

Dust gently and in case of light stains, pass the surface with a damp cloth or a neutral detergent, rinse with water without squeezing. Let the fabric dry inside out avoiding direct exposure to the sunlight. For small located and more obstinate stains, dissolve immediately with clear ethylic alcohol diluted in water to 20%, dab and then treat with a neutral detergent solution. Rinse abundantly.

## Approvals

**I** UNI 9175 classe 1 IM

**UK** BS 5852-1 part I

**USA** TB 117:2013

**EN** EN 1021-2

## Differenze colore

Slight differences between colour batches have to be considered normal.

**Diemme.**

**ERA / CAT. S**



CSE01



CSE02



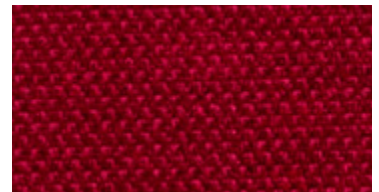
CSE21



CSE03



CSE05



CSE06



CSE19



CSE09



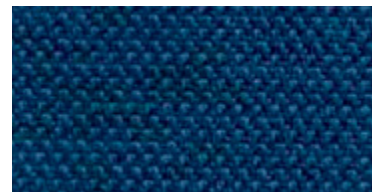
CSE16



CSE20



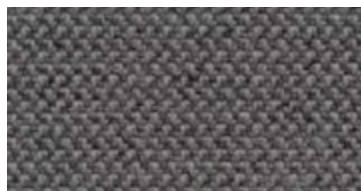
CSE10



CSE15



CSE11



CSE13



CSE14

## Composizione

100% Poliestere  
Coloranti non metallici

## Altezza

140 cm

## Peso

320g/m<sup>2</sup> ± 5%

## Resistenza all'abrasione

100.000 cicli Martindale

## Omologazioni

BS EN 1021 - 1:2014 (sigaretta)  
BS EN 1021 - 2:2014 (fiammifero)  
BS 7176:2007 Low Hazard  
Note: le prestazioni di infiammabilità dipendono dalla schiuma utilizzata

## Solidità alla luce

ISO 105 - B02:2014 5

## Pulizia

Aspirare regolarmente. Pulizia a secco professionale o pulire con un panno umido.

## Differenze Colore

Leggere differenze di colore fra un bagno e l'altro sono da considerarsi normali.

## Composition

100% Polyester  
Non metallic dyestuffs

## Width

140 cm

## Weight

320g/m<sup>2</sup> ± 5%

## Abrasion resistance

100.000 Martindale cycles

## Approvals

BS EN 1021 - 1:2014 (cigarette)  
BS EN 1021 - 2:2014 (match)  
BS 7176:2007 Low Hazard  
Note: Flammability performance is dependent on foam used

## Light Fastness

ISO 105 - B02:2014 5

## Cleaning

Vacuum regularly. Professionally dry clean or wipe clean with a damp cloth.

## Colour Differences

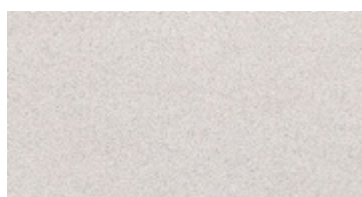
Slight differences between colour batches have to be considered normal.

# Diemme.

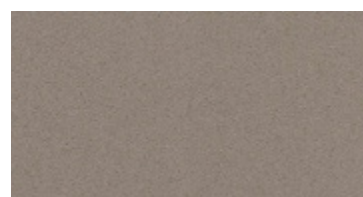
# IKON / CAT. TOP



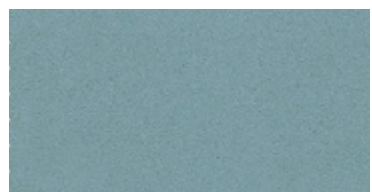
130



230



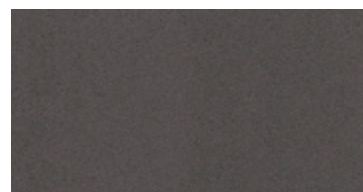
330



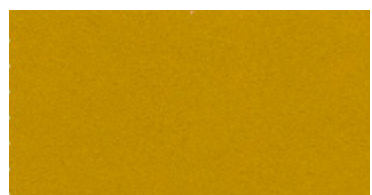
1730



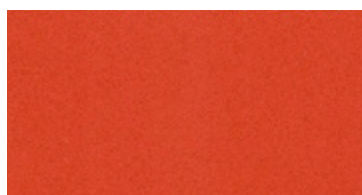
1830



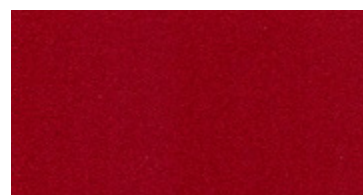
430



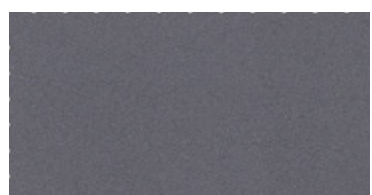
1030



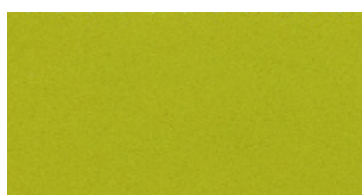
1130



1230



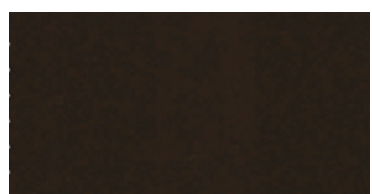
2430



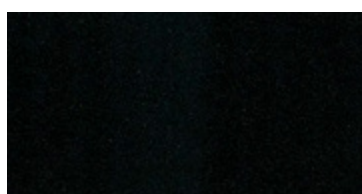
930



1430



630



2230

# IKON / CAT. TOP

Trattamento **ULTRA-FRESH** antibatterico e antiacaro.

## Composizione

Poliuretano 63% - Cotone 29% - Poliestere 8%

## Peso

480 g/m<sup>2</sup> ± 5%

## Altezza

140 cm

## Resistenza all'abrasione - Test Martindale

UNI EN ISO 12947-2 150.000 cicli

## Solidità alla luce

UNI EN ISO 105-B02 5-6

## Pulizia

Spolverare delicatamente e in caso di macchie lievi passare con un panno umido o con una soluzione di detergente neutro, risciaquando con acqua, senza strizzare.

Per le macchie localizzate e più ostinate (olio, grasso, cosmetici, inchiostro, caffè, liquori, chewing-gum ecc.) Si consiglia di seguire le seguenti istruzioni. Disciogliere tempestivamente la macchia con alcol etilico diluito (liquido incolore) in acqua al 20%, tamponare e trattare successivamente con una soluzione di detergente neutro, risciaquare bene.

## Omologazioni

**I** UNI 9175 classe 11M

**UK** BS 5852-1

**UK** BS 5852

**UK** sezione 4 CRIB 5

**EN** EN 1021-2

## Differenze colore

Leggere differenze di colore fra una partita e l'altra sono da considerarsi normali.

**ULTRA-FRESH** treatment, antimicrobial and antiacarus.

## Composition

Polyurethane 63% - Cotton 29% - Polyester 8%

## Weight

480 g/m<sup>2</sup> ± 5%

## Width

140 cm

## Abrasion test - Martindale test

UNI EN ISO 12947-2 150.000 turns

## Lightfastness

UNI EN ISO 105-B02 5-6

## Cleaning

Dust gently and in case of light stains pass the surface with a damp cloth or a neutral detergent, rinse with water without squeezing. The following instructions are recommended for small located and more obstinate stains(oil, fat, cosmetics, ink, coffee, liquor, chewing-gum etc.): dissolve immediately with clear ethylic alcohol diluted in water to 20%, dab and then treat with a neutral detergent solution. Rinse abundantly.

## Approvals

**I** UNI 9175 11M class

**UK** BS 5852-1

**UK** BS 5852

**UK** 4 CRIB 5 section

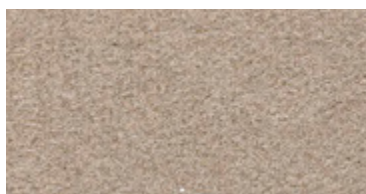
**EN** EN 1021-2

## Colour differences

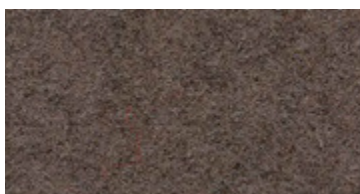
Slight color differences between one lot and another have to be considered within commercial tolerance.

**Diemme.**

**BLAZER / CAT. EXTRA**



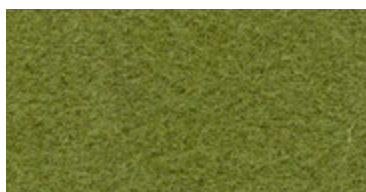
CUZ47



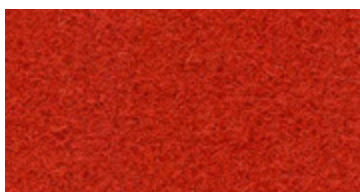
CUZ31



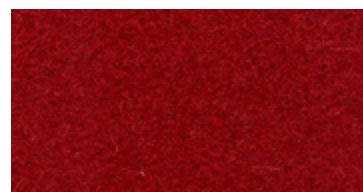
CUZ82



CUZ1F



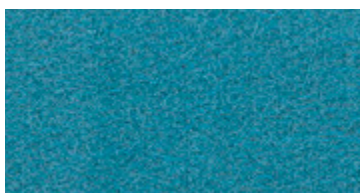
CUZ39



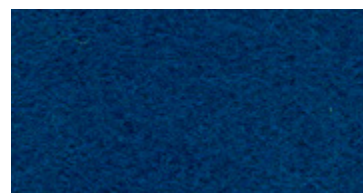
CUZ13



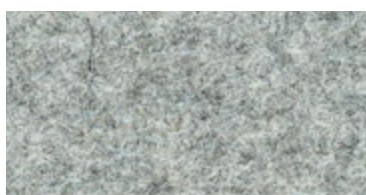
CUZ53



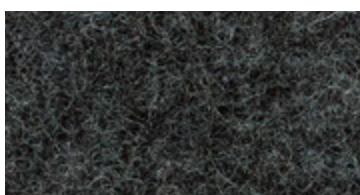
CUZ02



CUZ26



CUZ28



CUZ30



CUZ08



# BLAZER / CAT. EXTRA

## Composizione

100% Lana Vergine

## Peso

460 g/m<sup>2</sup> ± 5%

## Altezza

140 cm

## Resistenza all'abrasione - Test Martindale

UNI EN ISO 12947-2 50.000 cicli

## Omologazioni

**UK** BS EN 1021-1: 2006 (sigaretta)

**UK** BS EN 1021-2: 2006 (fiammifero)

**UK** BS 7176: 2007 Low hazard

**I** UNI 9175 classe 1IM

## Solidità alla luce

UNI EN ISO 105-B02 5

## Pulizia

Aspirare regolarmente. Pulizia a secco professionale in alternativa pulire con un panno umido.

## Differenze colore

Leggere differenze di colore fra una partita e l'altra sono da considerarsi normali.

## Composition

100% Virgin Wool

## Weight

460 g/m<sup>2</sup> ± 5%

## Width

140 cm

## Abrasion test - Martindale Test

UNI EN ISO 12947-2 50.000 turns

## Approvals

**UK** BS EN 1021-1: 2006 (cigarette)

**UK** BS EN 1021-2: 2006 (match)

**UK** BS 7176: 2007 Low hazard

**I** UNI 9175 1IM class

## Lightfastness

UNI EN ISO 105-B02 5

## Cleaning

Vacuum regularly. Professionally dry clean or wipe clean with a damp cloth.

## Colour differences

Slight color differences between one lot and another have to be considered within commercial tolerance.

**Diemme.**

**GORGEOUS / CAT. EXTRA**



2103



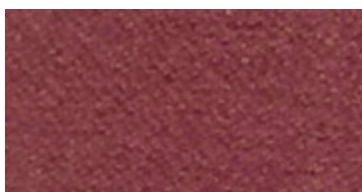
2102



2106



2158



2113



2120



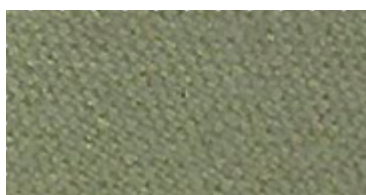
2111



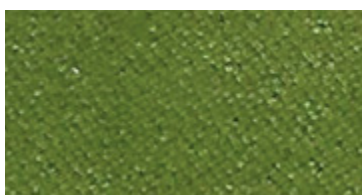
2116



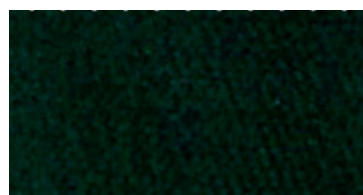
2126



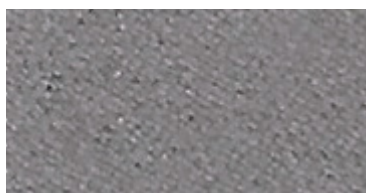
2140



2139



2135



2152



2151



2147

# GORGEOUS / CAT. EXTRA

## Composizione

100% PES FR  
TREVIRA CS

## Altezza

140 cm

## Peso

450g/m<sup>2</sup>

## Resistenza all'abrasione - Test Martindale

UNI EN ISO 12947-2    100.000 cicli

## Omologazioni

**UNI 9175 classe 1/M**

**UNI 9177 classe 1**

**M1**

**DIN 4102 - B1**

**BS 5852 Crib 5**

**TB117 sez. E p. 1 (California)**

**EN 1021 part. 1-2**

## Solidità alla luce

UNI EN ISO 105-B02 5

## Pulizia

Aspirare regolarmente. Pulizia a secco professionale, in alternativa pulire con un panno umido.

## Lavaggio



## Differenze Colore

Leggere differenze di colore fra un bagno e l'altro sono da considerarsi normali.

## Composition

100% PES FR  
TREVIRA CS

## Width

140 cm

## Weight

450g/m<sup>2</sup>

## Abrasion test - Martindale Test

UNI EN ISO 12947-2    100.000 turns

## Omologazioni

**I** UNI 9175 classe 1/M

**I** UNI 9177 classe 1

**F** M1

**D** DIN 4102 - B1

**UK** BS 5852 Crib 5

**USA** TB117 sez. E p. 1 (California)

**EN** EN 1021 part. 1-2

## Light Fastness

UNI EN ISO 105-B02 5

## Cleaning

Vacuum regularly. Professionally dry clean or wipe clean with a damp cloth.

## Washing

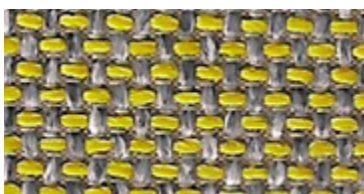


## Colour Differences

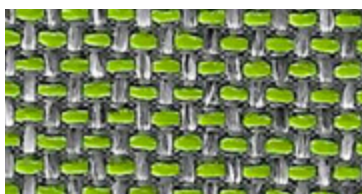
Slight differences between colour batches have to be considered normal.

# Diemme.

# HESTAN / CAT. EXTRA



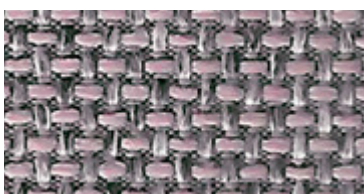
7035.19



7035.22



7035.28



7035.30

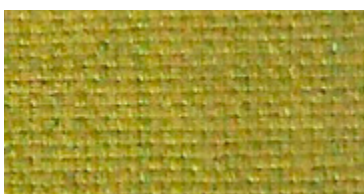


7035.23



7035.03

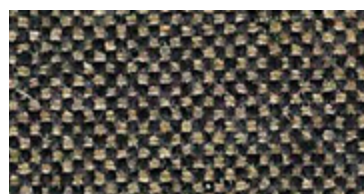
# WOLIN / CAT. EXTRA



7050.43



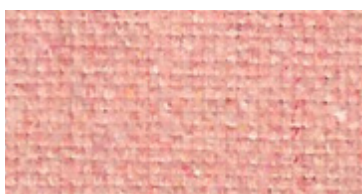
7050.38



7050.19



7050.30



7050.31



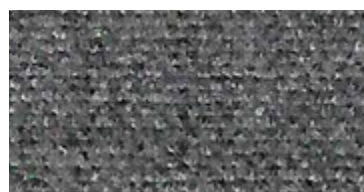
7050.36



7050.03



7050.06



7050.22

# HESTAN / CAT. EXTRA

## Composizione / Composition

100% poliestere ignifugo  
100% Flame retardant polyester

## Peso / Weight

± 570 g/m<sup>1</sup>

## Altezza / Width

cm 140

## Abrasione - Test Martindale / Abrasion - Test Martindale

ISO 12947-2 60000 cicli/turns ± 20%

## Solidità Luce / Lightfastness

ISO 105-B02 6 (scale 1-8)

## Pulizia / Cleaning

Non spazzolare e usare con regolarità l'aspirapolvere  
Do not brush and use the vacuum-cleanr regularly

## Lavaggio / Washing



## Omologazioni / Approvals

- I** UNI 9175, classe 1
- F** NF P92/503-507, M1
- D** DIN 4102, B1
- UK** BS 5852, crib 5
- USA** Cal TB 117
- EN** EN 1021/1-2

## Differenze colore / Colour differences

Leggere differenze di colore fra un bagno e l'altro sono da considerarsi normali.  
Slight differences between colour batches have to be considered normal.

# WOLIN / CAT. EXTRA

## Composizione / Composition

75% Wool/Lana 20% Poliestere/Polyester  
5% Poliammide/Polyamide

## Peso / Weight

± 638 g/m<sup>1</sup>

## Altezza / Width

cm 150

## Abrasione - Test Martindale / Abrasion - Test Martindale

ISO 12947-2 100.000 cicli/turns ± 20%

## Solidità Luce / Lightfastness

ISO 105-B02 6 (scale 1-8)

## Pulizia / Cleaning

Non spazzolare e usare con regolarità l'aspirapolvere  
Do not brush and use the vacuum-cleanr regularly

## Lavaggio / Washing



## Omologazioni / Approvals

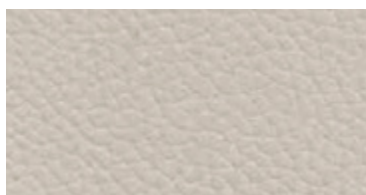
- I** UNI 9175, classe 1
- F** NF P92/503-507, M2
- D** DIN 4102, B2
- UK** BS 5852, crib 5
- USA** Cal TB 117
- EN** EN 1021/1-2

## Differenze colore / Colour differences

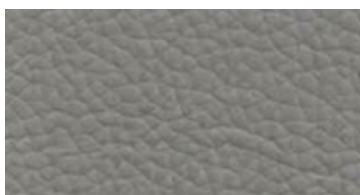
Leggere differenze di colore fra un bagno e l'altro sono da considerarsi normali.  
Slight differences between colour batches have to be considered normal.

# Diemme.

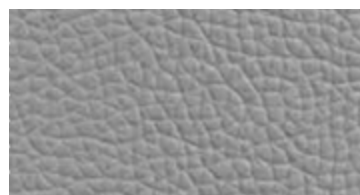
# POLO / CAT. FIESTA



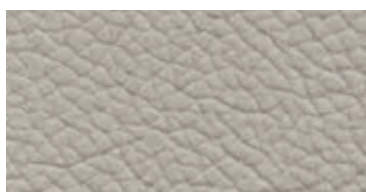
872



827



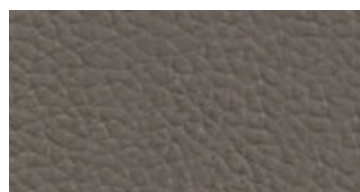
854



930



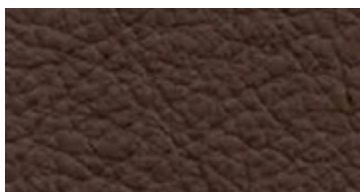
933



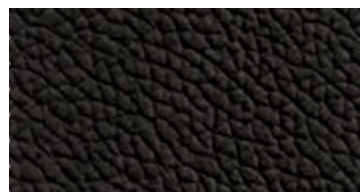
931



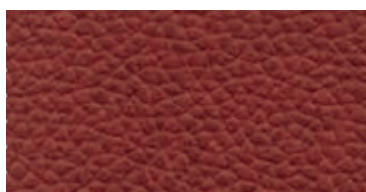
838



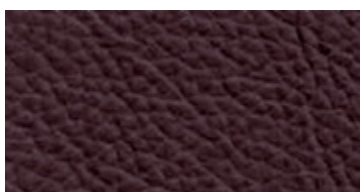
824



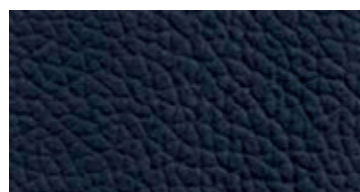
825



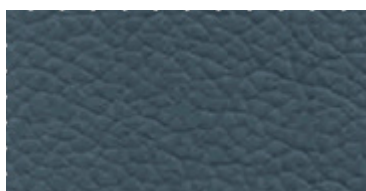
840



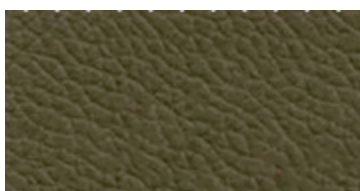
850



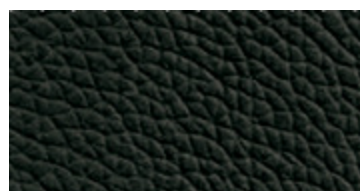
856



878



881



832

# POLO / CAT. FIESTA

## Caratteristiche

Pelle bovina di provenienza Europea, conciata al cromo tintura passante in botte e fiore leggermente smerigliato. Tutte le lavorazioni sono effettuate con la massima attenzione alla qualità del prodotto e al rispetto dell'ambiente mediante utilizzo di prodotti a norma CEE. **Le eventuali piccole imperfezioni, cicatrici ed irregolarità di stampa non sono da considerarsi difetti ma pregi che determinano la garanzia della vera pelle.**

## Spessore

0,9 - 1,0 mm

## Pulizia e manutenzione

Per la normale pulizia spolverare periodicamente con un panno pulito, morbido e asciutto. Eventuali macchie possono essere rimosse usando un panno pulito imbevuto in una soluzione d'acqua e sapone neutro bianco. Evitare di strofinare la superficie da trattare, ma tamponare, dall'esterno verso l'interno della macchia. Non asciugare la pelle alla luce del sole o con l'asciugacapelli. Non utilizzare mai sostanze detergenti non consigliate in quanto possono danneggiare il rivestimento in pelle causando crepe o scolorimento. Per mantenere vivo il colore del rivestimento, evitare l'esposizione del manufatto in pelle alla luce diretta del sole.

## Differenza Colore

I prodotti chimici necessari alla produzione della pelle, utilizzati per la concia, la tintura e la rifinitura dei grezzi, non contengono sostanze nocive alla salute ed all'ambiente. Per motivi tecnici non è possibile garantire la stessa tonalità del colore tra una partita e l'altra.

## Characteristics

First choice corrected quality European fine bovine leather, chromium tanned in barrel and grain surface lightly sanded. All our working methods are carried out respecting the environment and meet CEE standard duties. **Flaws and irregularities are not to be considered as defects, but qualities that guarantee "true leather".**

## Thickness

0,9 - 1,0 mm

## Cleaning and care

For normal cleaning just dust the leather with a clean, soft dry cloth. Any stains can be removed using a damp cloth and mild white detergent. Do not rub the surface but dab it from the outside towards the inside of the stain. Do not dry the leather in the sunlight or with a hair dryer. Do not use detergents that are not specific for leather, as they can damage the surface causing it to crack or fade. To keep the colours bright, do not expose the leather to direct sunlight.

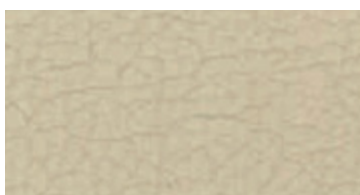
## Colour Differences

The chemicals needed for the production of leather, used for the tanning, the dyeing and the finishing of the raw hides, do not contain substances which can be harmful for health or the environment. Due to technical reasons it is not possible to guarantee the same tonality of colour from one bath to another.

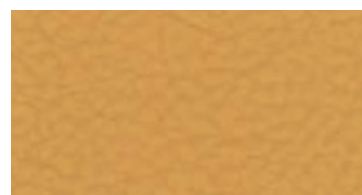
## Diemme.



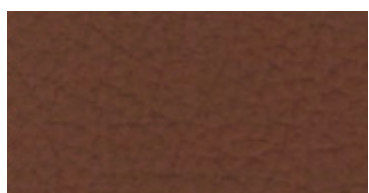
300



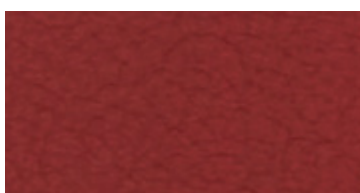
301



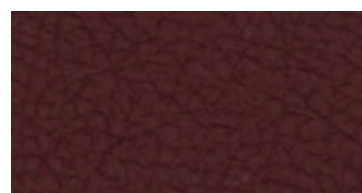
307



304



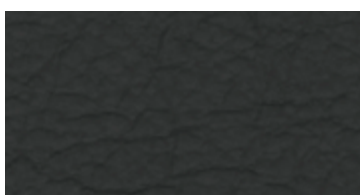
421



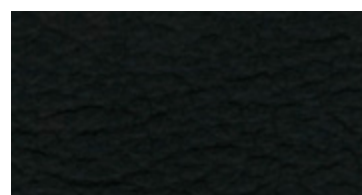
424



468

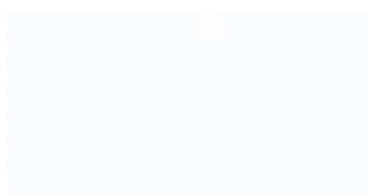


454

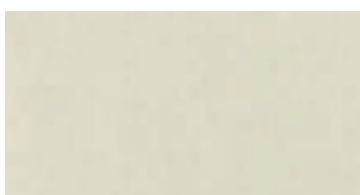


314

## NUVOLA



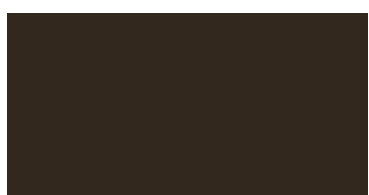
117



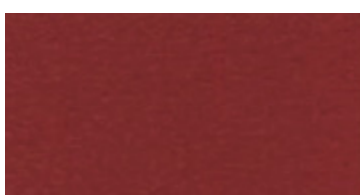
158



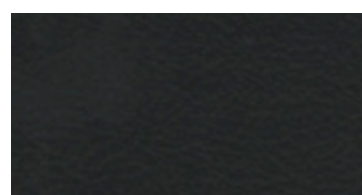
148



175



113



101



# FIESTA

## Composizione

Pelle bovina di provenienza Europea, conciata al cromo tintura passante in botte e fiore leggermente smerigliato. Tutte le lavorazioni sono effettuate con la massima attenzione alla qualità del prodotto e al rispetto dell'ambiente mediante utilizzo di prodotti a norma CEE. **Le eventuali piccole imperfezioni, cicatrici ed irregolarità di stampa non sono da considerarsi difetti ma pregi che determinano la garanzia della vera pelle.**

*First choice corrected quality European fine bovine leather, chromium tanned in barrel and grain surface lightly sanded. All our working methods are carried out respecting the environment and meet CEE standard duties. **Flaws and irregularities are not to be considered as defects, but qualities that guarantee "true leather"***

## Spessore / Thickness

0,8 - 0,9 mm

## Pulizia/Cleaning

Per lo **sporco normale** si consiglia:

Utilizzare acqua pura

Tamponare e assorbire se pressione

Non strofinare

*For every **day grime** it is advisable to:*

*Use water*

*Dot and absorb without pressure*

*Do not rub*

## Manutenzione / Care

Usare l'aspirapolvere

Arieggiare l'ambiente nei giorni umidi

Non usare prodotti chimici

Use vacuum cleaner

Air the room

Never use chemical products

## La pelle vi ringrazia se / Leather thanks if:

Evitare l'esposizione diretta al sole

Evitare l'essiccamento

Evitare il calore diretto

*Avoid direct exposure to sun-light*

*Do not place in very dry environments*

*Avoid direct heat*

## Differenze Colore

Leggere differenze di colore fra un bagno e l'altro sono da considerarsi normali.

*Slight differences between colour batches have to be considered normal.*

# NUVOLA

## Composizione

La qualità della Pelle NUVOLA, deriva da una migliore scelta dei grezzi di origine Europea e da una maggiore attenzione in tutte le fasi della lavorazione. I prodotti usati per la concia, per la tintura, e per il finissaggio rispettano pienamente le normative CEE e non contengono sostanze nocive per la salute. **Le eventuali piccole imperfezioni, cicatrici o irregolarità di stampa non sono da considerarsi difetti ma pregi che determinano la garanzia della vera pelle.**

*The quality of NUVOLA Leather is due to a better choice of bovines coming from Europe and to a greater attention during all the working process. The products used for tanning, dyeing and finishing are in conformity with CEE rules and they are not toxic for human health. **Flaws and irregularities are not to be considered as defects, but qualities that guarantee "true leather"**.*

## Spessore / Thickness

1,0 - 1,2 mm

## Pulizia/Cleaning

### Normale pulizia

Usare un panno imbevuto di latte scremato e di acqua in uguale misura

### Molto Sporco

Usare una soluzione di sapone di Marsiglia diluita in acqua tiepida, strofinare leggermente con una spugna pulita e imbevuta di acqua.

### Normal cleaning

*Soak a clean cloth in some skimmed milk and water and gently rub over the surface.*

### Very dirty

*Use a sponge soaked in luke warm and neutral soap and gently rub over the surface.*

## Manutenzione / Care

Non utilizzare mai i comuni detersivi o preparati vari per le pulizie in genere. Non trattare la pelle con oli di varia natura.

*Never use common detergents or other products for cleaning. Do not use oil of different composition.*

## La pelle vi ringrazia se / Leather thanks if:

Evitare l'esposizione diretta al sole

Evitare l'essiccamento

Evitare il calore diretto

*Avoid direct exposure to sun-light*

*Do not place in very dry environments*

*Avoid direct heat*

## Omologazioni / Approvals

BS EN 1021-1: 1994

BS EN 1021-2

California test

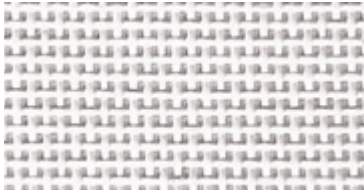
## Differenze Colore

Leggere differenze di colore fra un bagno e l'altro sono da considerarsi normali.

*Slight differences between colour batches have to be considered normal.*

**Diemme.**

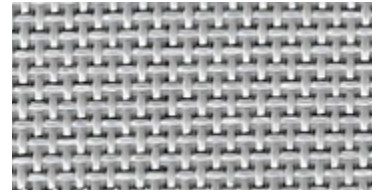
**RETI** AUCKLAND / FIT / SOCIAL



FB0538



FN0538



FG0538

**RETI** GOAL / HOP / LEAD / NEW BONN / SKIN / SOCIAL



1001



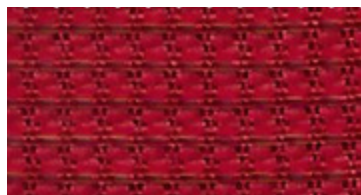
8043



8033



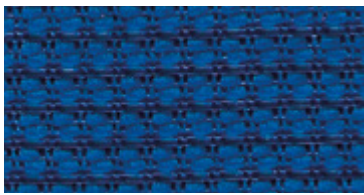
3029



4008



7041



6015

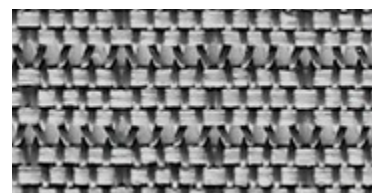


8089

**RETI** LIBERTY



NK-00



NK-10

## RETI AUCKLAND RETI FIT / SOCIAL

### Composizione / Composition

PVC 70% - 30% Poliestere/Polyester

### Peso / Weight

g/m<sup>2</sup> 560

### Resistenza alla fatica / Fatigue strength

EN 1728:2000 - EN 15373:2007 - livello 3° severo / 3° hard level  
>200.000 cicli/turns / 1.000 N

### Abrasione - Test Martindale / Abrasion - Test Martindale

EN ISO 12947-2:1998 >100.000 cicli/turns

### Solidità Luce / Lightfastness

UNI EN ISO 105 B02 8 (scala blu / blue scale)  
Tolleranza: da 5 a 8 / Tolerance: from 5 to 8

### Pulizia / Cleaning

Usare con regolarità l'aspirapolvere  
Use the vacuum-cleaner regularly

### Lavaggio / Washing

Lavare con acqua e sapone neutro.  
Wash with water and neutral soap.

### Omologazioni / Approvals

Certificazione OEKO-TEX STANDARD 100  
OEKO-TEX STANDARD 100 Certification

### Differenze colore / Colour differences

Leggere differenze di colore fra una partita e l'altra sono da considerarsi normali.  
Slight color differences between one lot and another have to be considered within commercial tolerance.

## RETI GOAL / HOP / LEAD NEW BONN / SKIN / SOCIAL

### Composizione / Composition

55% Poliestere/Polyester - 45% Poliammide/Polyamide

### Peso / Weight

g/ml 390 ± 5% g/m<sup>2</sup> 280 ± 5%

### Abrasione - Test Martindale / Abrasion - Test Martindale

UNI EN ISO 12947/2 100.000 cicli/turns ± 10%

### Solidità Luce / Lightfastness

UNI EN ISO 105 B02 6 (scala blu / blue scale)  
Tolleranza: da 5 a 8 / Tolerance: from 5 to 8

### Manutenzione e lavaggio / Cleaning and washing



### Reazioni al fuoco / Flammability

EN 1021/1

### Differenze colore / Colour differences

Leggere differenze di colore fra una partita e l'altra sono da considerarsi normali.  
Slight color differences between one lot and another have to be considered within commercial tolerance.

## RETI LIBERTY

### Composizione / Composition

70% Nylon - 30% Poliestere/Polyester

### Peso / Weight

g/m<sup>2</sup> 420

### Solidità Luce / Lightfastness

Xenotest - Lampada ad arco scala di grigi/20AFU - 4.5  
Xenotest - Arc Lamp Gray scale/20AFU - 4.5

### Abrasione - Test Martindale / Abrasion - Test Martindale

12 kpa (Martindale) 100.000 cicli/turns

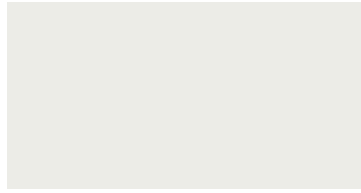
### Differenze colore / Colour differences

Leggere differenze di colore fra una partita e l'altra sono da considerarsi normali.  
Slight color differences between one lot and another have to be considered within commercial tolerance.

**NEW BONN**



**Nero / Black**  
RAL 9005



**Bianco / White**  
RAL 9003



**Grigio Chiaro / Light Grey**  
RAL 7040



**Antracite / Anthracite**  
RAL 7024



**Rosso / Red**  
PANTONE 201C



**Blu / Blue**  
PANTONE 294C

**NUKE**



**Bianco / White**  
Simil RAL 9003



**Arancione / Orange**  
Simil RAL 1028



**Azzurro / Sky Blue**  
Simil PANTONE 304 EC

**Diemme.**

**POLIPROPILENE / Polypropylene**

**SLIM**



**Nero / Black**  
Simil RAL 9011



**Bianco / White**  
Simil RAL 9003



**Sabbia / Sand**  
Simil PANTONE 401 EC

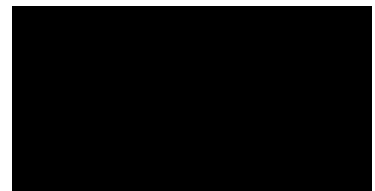


**Grigio / Gray**  
Simil RAL 7040

**SUNNY NEW**



**Bianco / White**  
Simil RAL 9003

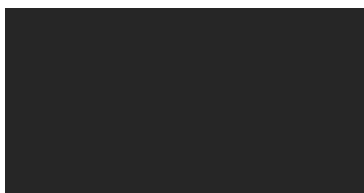


**Nero / Black**  
Simil RAL 9011

**Diemme.**

**POLIPROPILENE / Polypropylene**

**NO FRILL**



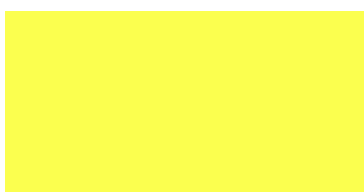
**Antracite / Anthracite**  
Simil RAL 7016



**Bianco / White**  
Simil RAL 9003



**Sabbia / Sand**  
Simil RAL 1015

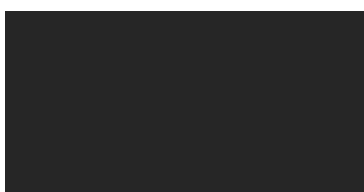


**Giallo Cedro / Yellow**  
Simil PANTONE 395 5EC



**Azzurro / Sky Blue**  
Simil PANTONE 304 EC

**RED HOT**



**Antracite / Anthracite**  
Simil RAL 7016



**Bianco / White**  
Simil RAL 9003



**Giallo Cedro / Yellow**  
Simil PANTONE 395 5EC



**Azzurro / Sky Blue**  
Simil PANTONE 304 EC

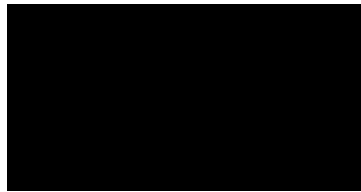
**Diemme.**

**POLIPROPILENE / Polypropylene**

**CLOP**



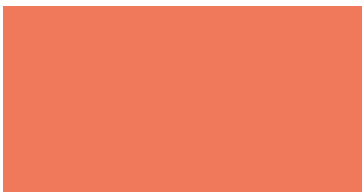
**Bianco / White**  
Simil RAL 9010



**Nero / Black**  
Simil RAL 9011



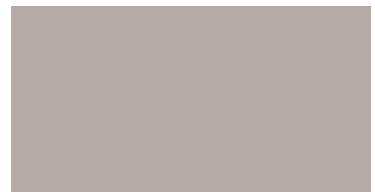
**Verde / Green**  
Simil PANTONE 553 U



**Arancione / Orange**  
Simil RAL 3022 o Pantone 7417U



**Azzurro 1010**  
**Light Blue 1010**  
NCS S 3010-B10G



**Beige 572**  
**Beige 572**  
NCS S 3005-Y80R

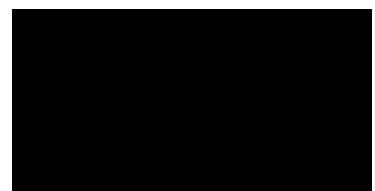


**Rosso Scuro 1451**  
**Dark Red 1451**  
NCS S 3560-Y90R

**CLOP / SEDIA IN CUOIO / HIDE**



**Naturale / Natural**



**Nero / Black**

**Diemme.**

**POLIPROPILENE / Polypropylene**

**KIRE**



**Bianco / White**  
RAL 9003



**Nero / Black**  
RAL 9011



**Verde / Green**  
RAL 6005



**Ocra / Ocher**  
Pantone 7510 L



**Azzurro / Light blue**  
NCS S 3010-B10G

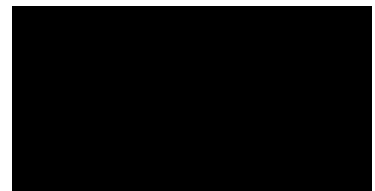


**Mattone / Brick**  
Pantone 18-1248 TCX

**KIRE / SEDIA IN CUOIO / HIDE**



**Naturale / Natural**

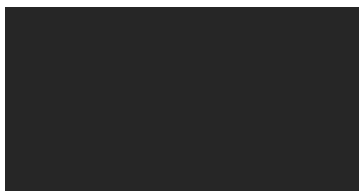


**Nero / Black**



# Diemme. POLIURETANO RIGIDO TECH / Tech Polyurethane

## EON

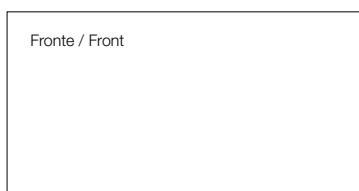


Antracite / Anthracite  
Simil RAL 7024

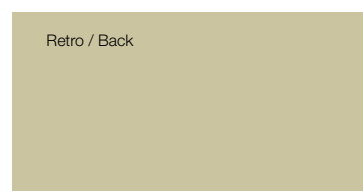


Bianco / White  
Simil RAL 9016

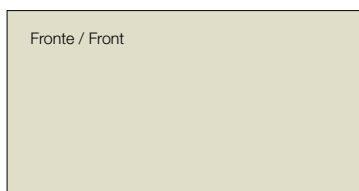
## Colori BICOLOR - TWO-COLORS SHELL



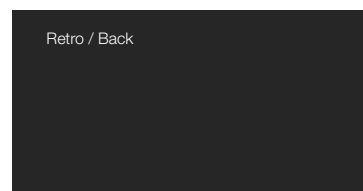
Bianco / White  
Simil RAL 9016



Tortora / Beige  
RAL 1019



Panna / Cream  
Simil RAL 1013



Moka / Chocolate  
Simil RAL 8019

**Diemme.**

**POLIETILENE** / Polyethylene

**MARGARITA** / SEDIA / CHAIRS



**Antracite / Anthracite**  
Simil PANTONE 425 C



**Bianco / White**  
Simil RAL 9010



**Grigio / Grey**  
Simil PANTONE 413 EC



**Giallo / Yellow**  
Simil PANTONE 130 EC



**Rosso / Red**  
Simil PANTONE 201C



**Verde / Green**  
Simil PANTONE 583C

**MARGARITA** / TAVOLO / TABLE



**Antracite / Anthracite**  
Simil PANTONE 425 C



**Bianco / White**  
Simil RAL 9010

**Diemme.**