

# Fabrics & Finishings 2023



SELECT 61186 (3)



VELVET Winered 39 (2)



NEXT NX-7 (1)



LEATHER PREMIUM 2875 (5)



VELVET Copper 126 (2)



LEATHER PREMIUM 2845 (5)



LEATHER PREMIUM 2840 (5)



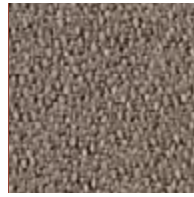
VALENCIA 107-0002 (2)



XTREME YS136 (2)



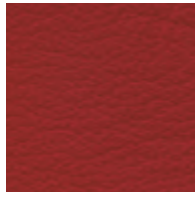
STEP 63075 (3)



EVO EV-2 (1)



VALENCIA 107-0034 (2)



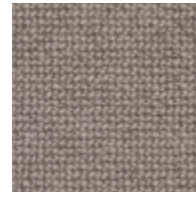
LEATHER S-19 (4)



SOFTLINE SL-19 (2)



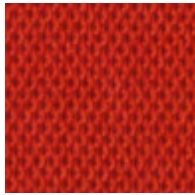
STEP 60090 (3)



CURA 61168 (2)



XTREME YS079 (2)



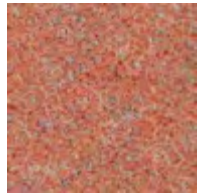
SPRINT PS010 (2)



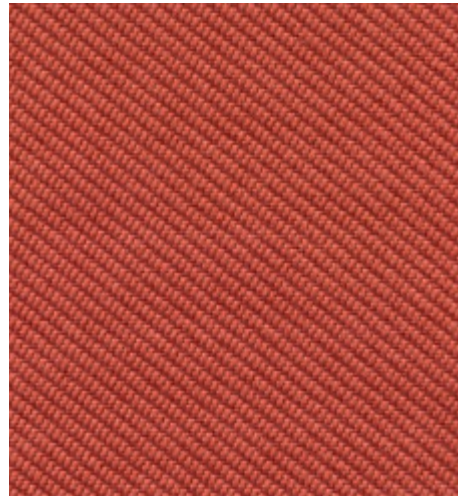
RHYTHM Rhythm 63067



EVO EV-5 (1)



SYNERGY LDS73 (3)



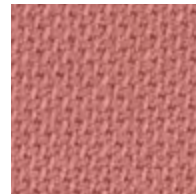
OCEANIC OOC12 (3)



SYNERGY LDS74 (3)



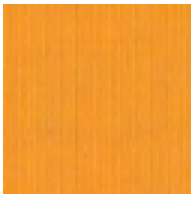
OCEANIC OOC16 (3)



SELECT 65117 (3)

Price Group

- (1) (2) (3) (4) (5)



NEXT NX-1 (1)



ALBA 3005 (1)



CURA 62083 (2)



STEP 62057 (3)



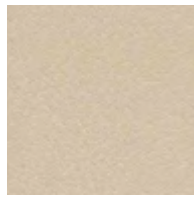
VALENCIA 107-2116 (2)



VELVET Ocre 23 (2)



LEATHER PREMIUM 2180 (5)



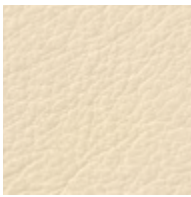
LEATHER S-21 (4)



SOFTLINE SL-21 (2)



SELECT 62097 (3)



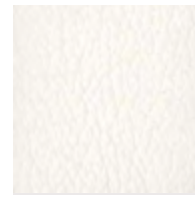
LEATHER S-10 (4)



SOFTLINE SL-10 (2)



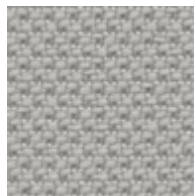
SOFTLINE SL-28 (2)



LEATHER S-28 (4)



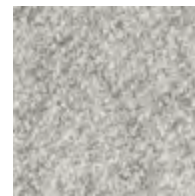
RUNNER Runner 60061 (3)



ALBA 8078 (1)



OCEANIC OOC13 (3)



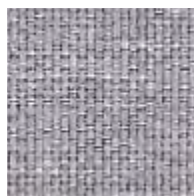
SYNERGY LDS08 (3)



SYNERGY LDS16 (3)



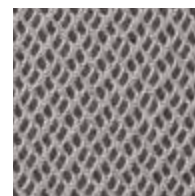
XTREME YS094 (2)



NEXT NX-10 (1)



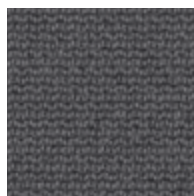
STEP 60091 (3)



RHYTHM Rhythm 60165 (3)



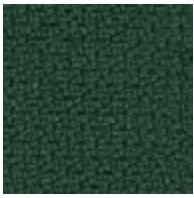
VALENCIA 107-4045 (2)



CURA 60110 (2)



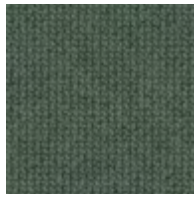
SPRINT PS028 (2)



STEP 68161 (3)



VELVET Emerald 184 (2)



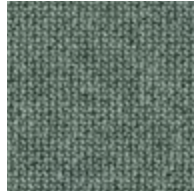
CURA 68182 (2)



SYNERGY LDS49 (3)



VELVET Eucalyptus 193 (2)



CURA 68186 (2)



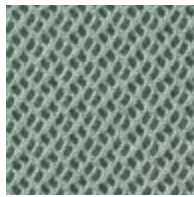
XTREME YS047 (2)



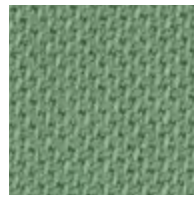
NEXT NX-11 (1)



XTREME YS096 (2)



RHYTHM Rhythm 68121 (2)



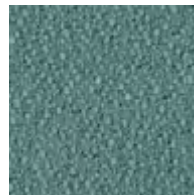
SELECT 68210 (3)



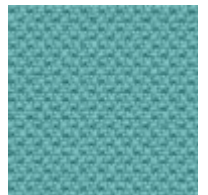
OCEANIC OOC04 (3)



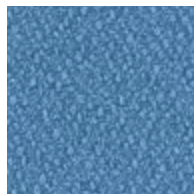
SPRINT PS041 (2)



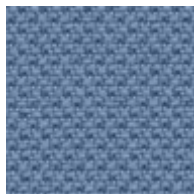
EVO EV-24 (1)



ALBA 7026 (1)



EVO EV-25 (1)



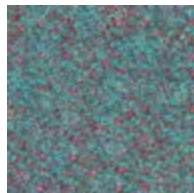
ALBA 6005 (1)



VALENCIA 107-2107 (2)



VALENCIA 107-4042 (2)



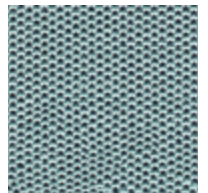
SYNERGY LDS56 (3)



SELECT 67098 (3)



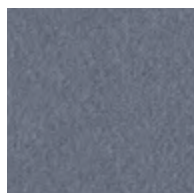
STEP 67004 (3)



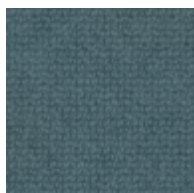
SPRINT PS039 (2)



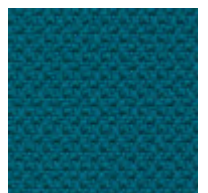
STEP 66152 (3)



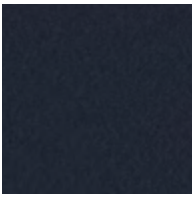
VELVET Niagara 158 (2)



CURA 66167 (2)



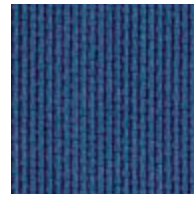
ALBA 6031 (1)



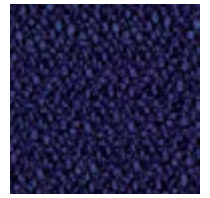
VELVET  
Navy 49 (2)



XTREME  
YS026 (2)



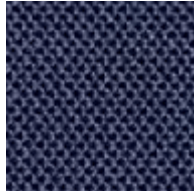
NEXT  
NX-15 (1)



EVO  
EV-10 (1)



OCEANIC  
OOC06 (3)



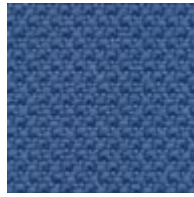
SPRINT  
PS033 (2)



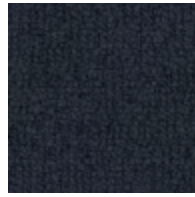
RHYTHM  
Rhythm 66152



SYNERGY  
LDS62 (3)



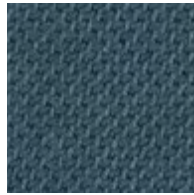
ALBA  
6026 (1)



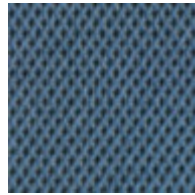
CURA  
66170 (2)



OCEANIC  
OOC11 (3)



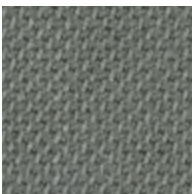
SELECT  
67097 (3)



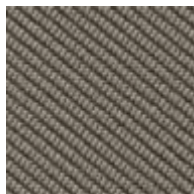
SPRINT  
PS040 (2)



VELVET  
Lavender 71 (2)



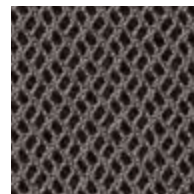
SELECT  
60132 (3)



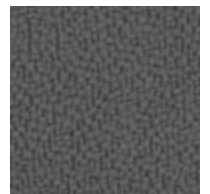
OCEANIC  
OOC08 (3)



EVO  
EV-14 (1)



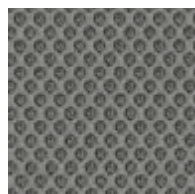
RHYTHM  
Rhythm 60176



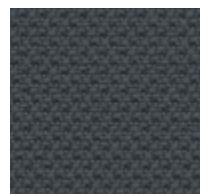
XTREME  
YS081 (2)



ALBA  
8003 (1)



RUNNER  
Runner 60011



LEATHER  
PREMIUM  
2760 (5)



SPRINT  
PS030 (2)



SYNERGY  
LDS17 (3)



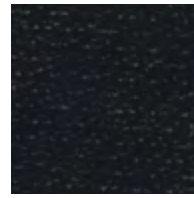
OCEANIC  
OOC01 (3)



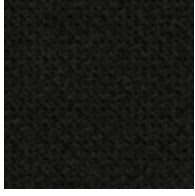
XTREME  
YS009 (2)



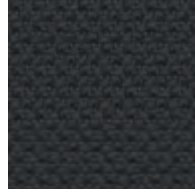
SPRINT  
PS004 (2)



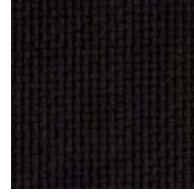
STEP  
60999 (3)



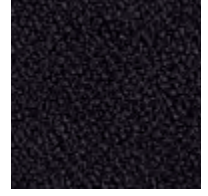
CURA  
60999 (2)



ALBA  
8010 (1)



NEXT  
NX-16 (1)



EVO  
EV-11 (1)



LEATHER  
S-18 (4)



SOFTLINE  
SL-27 (2)



EVO  
EV-1 (1)



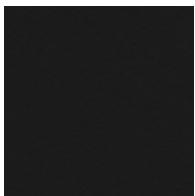
SELECT  
60999 (3)



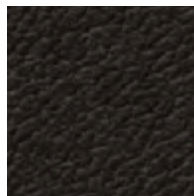
VALENCIA  
107-9035 (2)



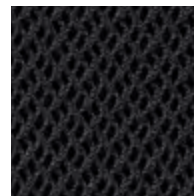
NEXT  
NX-14 (1)



LEATHER  
PREMIUM  
2900 (5)



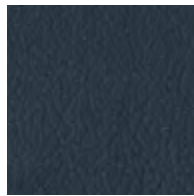
SOFTLINE  
SL-18 (2)



RHYTHM  
Rhythm 60999



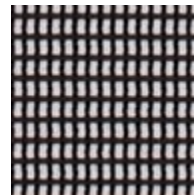
LEATHER  
S-16 (4)



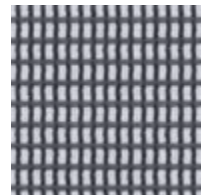
LEATHER  
S-27 (4)



RUNNER  
Runner 60999



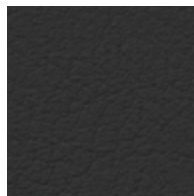
STRING  
String 60999



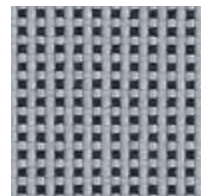
STRING  
String 60118



SOFTLINE  
SL-16 (2)



VALENCIA  
107-4003 (2)



NEXT  
NX-12 (1)

Kolory oferowane przez Profim sprzyjają tworzeniu harmonijnych biur, a najnowsze kolekcje tapicerek stworzone z post-konsumenckiego plastiku są zgodne z nowymi standardami cyrkularnej produkcji. W nowym wzorniku 2023 barwy ułożone są zgodnie z ich temperaturą – od tonów najcieplejszych, przez chłodne, aż do neutralnych. Pozwala to na intuicyjną pracę z kolorami.

Profim colors concept has been carefully curated towards the creation of harmonious offices. Our latest collections of upholstery made of post-consumer plastic comply with our new standards of circular production. We've arranged the hues in the 2023 color chart according to their tone – from the warm, through cool, to neutral tones. This allows you to work intuitively with colors.

Das Farbkonzept von Profim ermöglicht die Gestaltung von harmonischen Büroräumen. Die neuesten Stoffkollektionen, die aus Post-Consumer-Kunststoff hergestellt werden, entsprechen unseren neuen Standards der Kreislaufproduktion. In der neuen Farbmusterkarte 2023 sind die Farben nach ihrem Ton geordnet – von den wärmsten Tönen über kühle bis hin zu neutralen Tönen. So lässt sich intuitiv mit den Farbtönen arbeiten.

---

## Frames

White RAL 9016, Black RAL 9005: Acos<sup>Pro</sup>, Arca, Ariz, Bit, Com\*, Chic, Chic Lounge, Chic Tables, Ellie<sup>Pro</sup>, Fan, Normo, Nu, Revo Tables, Tables: SV, SH, SR, Seven, Zoo\*  
Black RAL 9005: Chic Air, MyTurn Sofa, MyTurn Sofa Tables, October, October Tables, Vancouver Lite, Wall In, Xenon, Xenon Net

---

## Frames

Acos<sup>Pro</sup>, Ariz, Chic, Chic Lounge, Chic Tables, Com\*, Ellie<sup>Pro</sup>, Fan, Normo, Nu\*, Revo Tables, Seven, Tables: SV, SH, SR, Zoo\*

---

## Frames

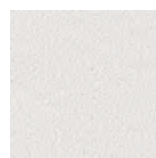
Acos<sup>Pro</sup>, Ariz, Chic, Chic Lounge, Chic Tables, Com\*, Fan, Normo, Nu, Revo Tables, Seven, Tables: SV, SH, SR



White  
RAL 9016



Black  
RAL 9005



Light Grey  
NCS S 2500-N



Grey  
NCS S 6500-N



Deep Green  
RAL 6004



Navy Blue  
RAL 5003



Burgundy  
RAL 3005



Salvia/Green  
RAL 6021



Blue  
RAL 5014



Terracotta  
RAL 3012

---

## Frames

Acos<sup>Pro</sup>, Arca, Ariz, Bit, Chic, Chic Air, Chic Lounge, Chic Tables, Com, Ellie<sup>Pro</sup>, Fan, MyTurn Sofa, MyTurn Sofa Tables, Normo, Nu, October, October Tables, Revo Tables, Seven, Sorriso, Sun, Tables: SV, SH, SR, Vancouver Lite, Wall In, Xenon, Xenon Net, Zoo

---

## Frames

Accis<sup>Pro</sup>, Arca, Ariz, Bit, Chic, Chic Air, Chic Lounge, Chic Tables, Com\*, Ellie<sup>Pro</sup>\*, Fan, MyTurn, MyTurn Sofa, MyTurn Sofa Tables, Nu, October, October Tables, Sorriso, Sun, Tables: SV, SH, SR, Trillo<sup>Pro</sup>, Vancouver Lite, Wall In, Xenon, Xenon Net, Zoo\*

---

## Aluminium elements

Accis<sup>Pro</sup>, Action, Arca, Ellie<sup>Pro</sup>, Fan, LightUp, Motto, MyTurn, Nu, Playa, Raya, Softbox, Softbox Tables, Table SF, Trillo<sup>Pro</sup>, Violle, Veris Net, Xenon, Xenon Net

---

## Aluminium elements

White RAL 9016, Graphite, Black RAL 9005: Ellie<sup>Pro</sup>, Trillo<sup>Pro</sup>, Nu  
White RAL 9016, Graphite: Accis<sup>Pro</sup>  
White RAL 9016, Black RAL 9005: Violle  
Black RAL 9005: Action, Softbox, Softbox Tables

---

## Plastics

Mickey

---

## Plastics, Frames

Zoo

---

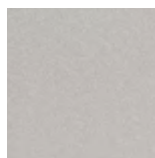
## Plastics

Light Grey RAL 7047, Black RAL 9005: Accis<sup>Pro</sup>, Ellie<sup>Pro</sup>, Trillo<sup>Pro</sup>, LightUp, Violle  
Grey RAL 7043: Trillo<sup>Pro</sup>

---

## Plastics

Ariz



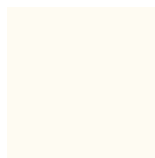
MetalikPro



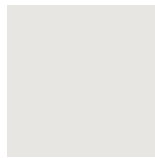
Chrome



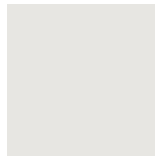
Polished



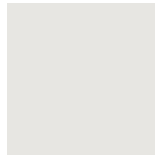
White  
RAL 9016



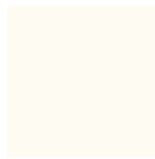
Light Grey  
RAL 7047



Light Grey  
NCS S 2500-N



Light Grey  
RAL 7047



White  
CODE 20



Gray Blue  
CODE 503

---

## Frames

Chic\*, Chic Lounge, Chic Tables\*, Com\*, Ellie<sup>Pro</sup>\*, Fan\*, Nu\*

---

## Frames

Ellie<sup>Pro</sup>\*

---

## Frames

Ellie<sup>Pro</sup>\*

---

## Aluminium elements

Arca, Ellie<sup>Pro</sup>, Fan, Nu, Playa, Raya, Softbox, Softbox Tables, Trillo<sup>Pro</sup>, Veris Net



Graphite



Beige  
RAL 7036



Grey  
NCS S 6500-N



Grey  
RAL 7043



Ashen  
CODE 517



Navy  
CODE 516



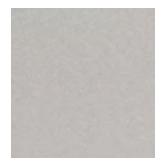
Gold



Metalsilver



Graphite



MetalikPro



Black  
RAL 9005



Grey  
RAL 7043



Black  
RAL 9005



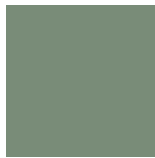
Black  
RAL 9005



Black  
CODE 01



Red  
CODE 3020



Olive Green  
CODE 513



---

## Wood (oak)

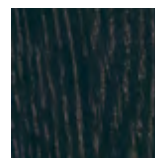
Fan, Tables SW



HO6



HO12



HO11

---

## Wood (beech)

Com, Chic, Chic Air, ElliePro, Fan, Nu, October, Tables SW



H6  
(matching NB)



H12



H5

---

## Natural modified veneers

MyTurn Sofa, SoftBox



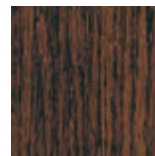
HM10



HM11



HM12



HM20

---

## Natural veneers

Chic Tables, Com, Revo Tables



Ash  
NA



Beech  
NB (matching H6)



Oak  
NO

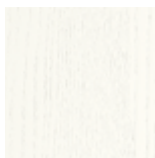


Walnut  
NW

---

## Coloured natural veneers

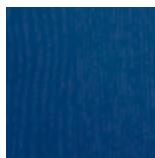
Chic Tables, Com, Revo Tables



White Ash  
CNA01



Deep Green Ash  
CNA05 RAL 6004



Navy Blue Ash  
CNA06 RAL 5003



Burgundy Ash  
CNA07 RAL 3005

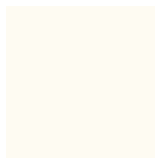


Black Ash  
CNA02

---

## HPL

MyTurn Sofa, SoftBox Tables



White  
LW01 RAL 9016



Grey  
LW04 RAL 7037

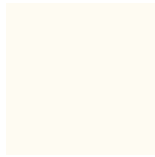


Black  
LW02 RAL 9011

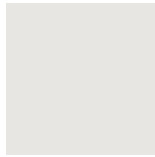
---

## HPL

Com, Revo Tables, Tables SH/SR, Wall In



White  
LW01 RAL 9016



Light Grey  
LW03 NCS S 2500-N



Grey  
LW04 RAL 7037



Black  
LW02 RAL 9011



Navy Blue  
LW06 RAL 5003

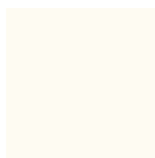


Light Burgundy  
LW07 RAL 3004

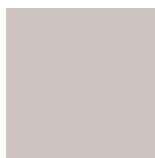
---

## Tempered Glass

Chic Tables



White  
G1



Beige  
G3 RAL 7044



Graphite  
G4 RAL 7042



Black  
G2

\*see current pricelist to find out which frame colours are available

# Standard Collection

## Technical Specifications

	Alba	Evo	Next	Cura	Softline	Sprint	Valencia	Velvet	Xtreme	Oceanic	Select	Step	Synergy	Rhythm	Runner	String	Leather	Leather Premium
<b>COMPOSITION (%)</b>																		
Wool	-	-	-	-	-	-	-	-	-	-	85	-	95	-	-	-	-	-
Polyurethane	-	-	-	-	100 <sup>1</sup>	-	-	-	-	-	-	-	-	-	-	-	-	-
Polyamide	-	-	-	-	-	-	-	-	-	-	15	-	5	-	-	-	-	-
Polyester	100	100	100	2	-	100	-	100 <sup>1</sup> 90 <sup>2</sup>	-	-	-	-	-	100	80	100	-	-
Polyester Hi-Loft <sup>2TM</sup>	-	-	-	-	-	-	100 <sup>2</sup>	-	-	-	-	-	-	-	-	-	-	-
Post-consumer recycled Polyester	-	-	-	98	-	-	-	-	100	100	-	-	-	-	20	-	-	-
Recycled Polyester	-	-	-	-	-	-	-	-	-	-	-	-	-	-	-	-	-	-
Trevira CS	-	-	-	-	-	-	-	-	-	-	-	100	-	-	-	-	-	-
Vinyl	-	-	-	-	-	-	100 <sup>1</sup>	-	-	-	-	-	-	-	-	-	-	-
Cotton	-	-	-	-	100 <sup>2</sup>	-	-	10 <sup>2</sup>	-	-	-	-	-	-	-	-	-	-
Leather	-	-	-	-	-	-	-	-	-	-	-	-	-	-	-	-	100	100
<b>ENVIRONMENTAL FACTS</b>																		
EU Ecolabel	-	•	-	•	-	-	-	-	•	•	•	•	•	-	•	-	-	-
Oeko-Tex <sup>®</sup> Standard 100	•	•	•	•	-	-	-	-	•	•	•	•	-	•	•	•	-	-
Cradle to Cradle	-	-	-	-	-	-	-	-	-	-	-	-	-	-	•	-	-	-
100% free of heavy metals	-	-	-	-	-	-	-	-	-	-	-	•	-	-	-	-	-	-
Indoor Advantage Gold	-	-	-	-	-	•	-	-	•	-	-	-	•	-	-	-	-	-
<b>FLAMMABILITY</b>																		
BS EN 1021 – Cig. & Match	•	•	•	•	-	•	•	-	•	•	•	•	•	•	•	•	•	•
BS EN 1021-1 – Cigarette	-	-	-	-	•	-	-	-	-	-	-	-	-	-	-	-	-	-
BS 7176 Low Hazard	-	-	-	-	-	•	-	-	•	•	-	-	•	-	-	-	-	-
BS 7176 Medium Hazard	•	-	-	-	-	-	-	-	•	•	-	-	•	-	•	-	-	-
BS 5852 Part 1 0 Cigarette	-	-	-	-	-	-	-	•	-	-	-	-	-	-	-	-	-	-
BS 5852 Part 1 0,1 Cig. & Match	-	-	-	-	-	-	-	-	-	-	•	-	-	-	-	-	-	-
BS 5852 Crib 5	•	-	-	-	-	-	-	-	•	-	•	•	-	•	-	-	-	-
DIN 4102 B1	-	-	-	-	-	-	-	-	•	-	-	•	-	•	-	-	-	-
DIN 4102 B2	-	-	-	-	-	-	•	-	-	-	-	-	-	-	-	-	-	-
UNI 9175 (Class 1IM)	•	-	-	-	-	•	-	-	•	-	-	•	•	-	•	-	-	-
Önorm B1/Q1	-	-	-	-	-	-	-	-	-	-	-	•	-	-	-	-	-	-
NF D 60-013	-	-	-	-	-	-	-	-	•	-	-	-	-	-	-	-	-	-
NF P 92-503/M2	-	-	-	-	-	-	•	-	-	-	-	-	-	-	-	-	-	-
CA TB 117-2013	•	-	-	•	-	-	-	-	-	•	•	•	-	•	•	•	-	-
IMO A.652 (16)	-	-	-	-	-	-	-	-	-	-	-	-	-	-	-	-	-	-
IMO MSC 307 (88) Annex 1 part 8	-	-	-	-	-	-	-	-	-	-	•	-	-	-	-	-	-	-
ASTM E 84 Class I	-	-	-	•	-	-	-	-	-	•	-	-	-	-	-	-	-	-
<b>FASTNESS TO RUBBING</b>																		
Dry	4-5	4-5	-	4-5	-	4	-	-	4	-	4-5	4-5	4	4-5	4-5	4-5	4-5	>4
Wet	4-5	4-5	-	4-5	-	4	-	-	4	-	4-5	4-5	4	4-5	4-5	4-5	4-5	>4
<b>OTHER</b>																		
Weight (g/m <sup>2</sup> )	450	320	340	300	220	325	650	305	310	497	365	336	400	328	320	220	-	-
Width (cm)	140	140	140	140	140	150	140	140	140	140	140	140	140	160	160	150	-	-
Thickness	-	-	-	-	-	-	-	-	-	-	-	-	-	-	-	-	0.8-1.0 mm (+/-15%)	1.0-1.2 mm
Abrasion (Martindale)	100000	180000	100000	100000	≥50000	170000	>300000	>100000	100000	100000	200000	100000	100000	70000	70000	70000	-	-
Pilling (EN ISO 12945-2)	4-5	5	4-5	4-5	-	4	-	4-5	5	4	4	4-5	4	5	5	4-5	-	-
Light fastness (EN ISO 105-B02)	6	4-5	4-5	5-8	-	5	>5	4-5	6	5	5-8	5-7	5	5-7	5-7	5-7	5	5
PZH Hygenic Certificate	-	•	•	-	•	5	•	-	-	-	-	-	-	-	-	-	-	-
Bacterial resistance (AATCC 147)	-	-	-	-	-	-	-	•	-	-	-	-	-	-	-	-	-	-
Mildew resistance (ASTM G21-02)	-	-	-	-	-	-	-	•	-	-	-	-	-	-	-	-	-	-
Urine resistance	-	-	-	-	-	-	-	•	-	-	-	-	-	-	-	-	-	-
Antistatic (ASTM D-257)	-	-	-	-	-	-	•	-	-	-	-	-	-	-	-	-	-	-
Acoustic test air flow resistance EN 29053 & ISO 9053-1	-	-	-	•	-	-	-	-	-	-	-	-	-	-	-	-	-	-

<sup>1</sup> surface

<sup>2</sup> basic material

More information about maintenance can be found at [www.profim.eu](http://www.profim.eu)