

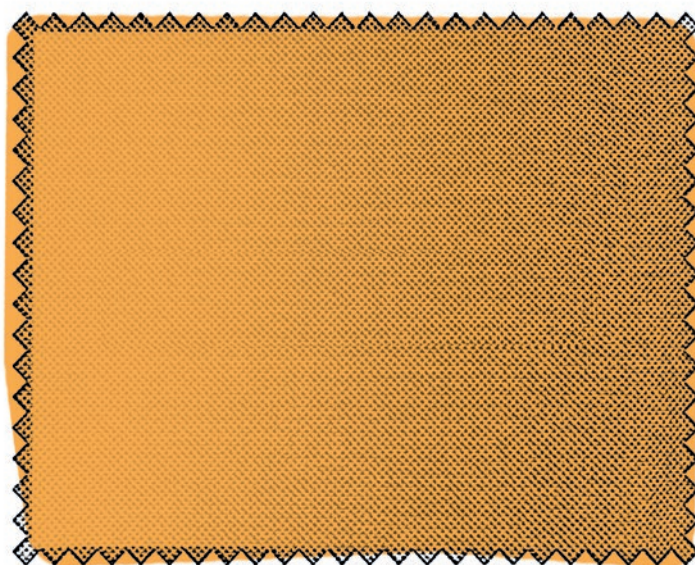
# LEYFORM

the seating experience

The background of the page is a complex, abstract graphic composed of numerous thin, golden-yellow lines that flow and curve across the space. These lines create a sense of movement and depth, with some lines being thicker than others, forming a mesh-like structure that resembles the contours of a chair or a piece of furniture. The overall effect is one of fluidity and elegance.

*Flow*

*Rivestimenti  
Upholstery covers*



# Rivestimenti

Upholstery covers

Revêtements

Bezüge



# Serie 100

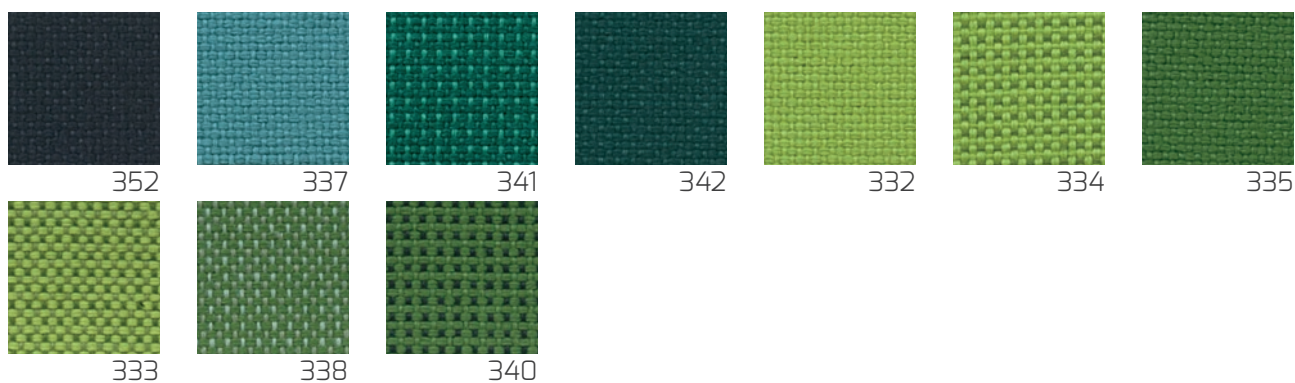
## Categoria B

100% Polyester Trevira C5

260 ± 5% g/m<sup>2</sup> | Martindale: 60.000 | Pilling: 5 | Xenotest: 6 | Flammability: 







# Serie 200

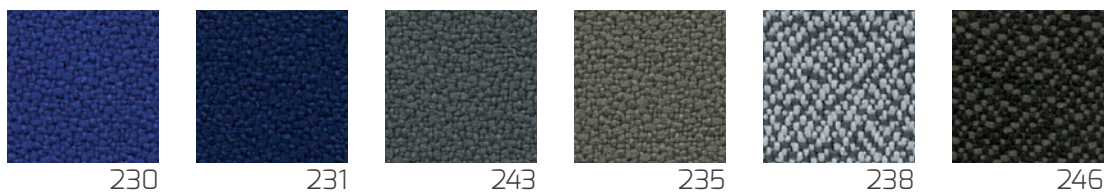
## Categoria B

100% Polyester Trevira CS

300 ± 5% g/m<sup>2</sup> | Martindale: 100.000 | Pilling: 5 | Xenotest: 6 | Flammability: ~~✗~~







# Serie 600

## Categoria B

83% Pvc | 17% Rayon / Pes

600 ± 5% g/m<sup>2</sup> | Martindale: 50.000 | Flextest: 80.000 | Xenotest: 6 | Flammability: ~~X~~

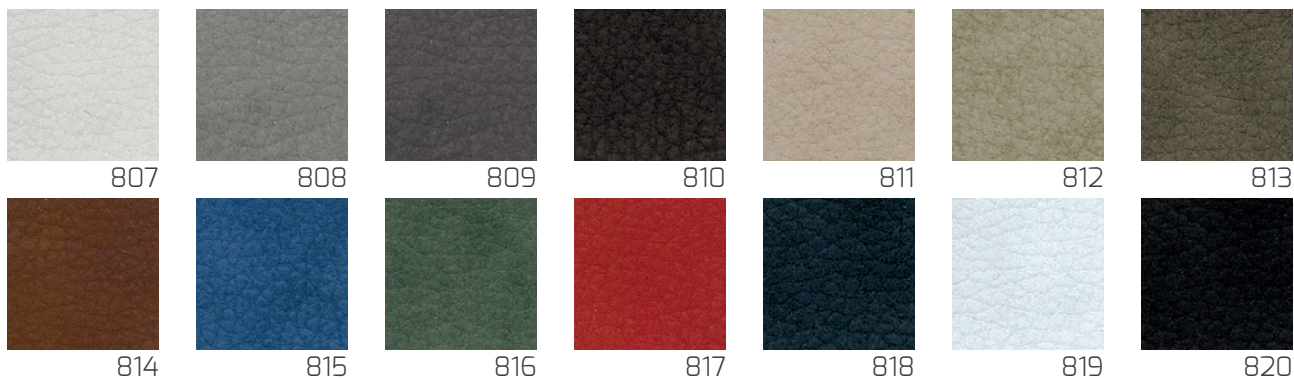


# Ecopelle plus

## Categoria D

66% Pvc | 17% Pes | 17% Cot

750 ± 5% g/m<sup>2</sup> | Martindale: 15.000 | Flextest: 300.000 | Traction: 1100 | Xenotest: 7 | Flammability: ~~X~~



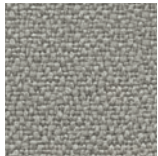


# Xtreme

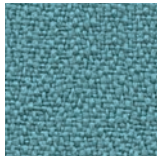
## Categoria D

100% Extreme FR®

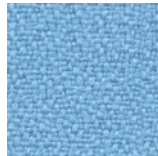
285 ± 5% g/m<sup>2</sup> | Martindale: 100.000 | Pilling: 5 | Xenotest: 6 | Flammability: ~~X~~



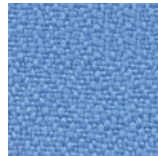
YS108



YS074



YS174



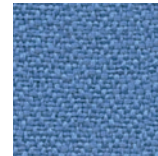
YS157



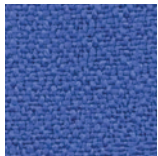
YS071



YS096



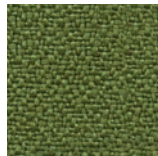
YS073



YS097



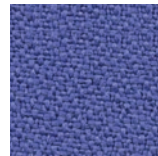
YS091



YS077



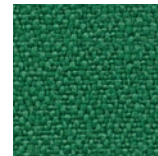
YS156



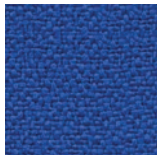
YS069



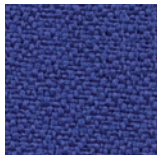
YS158



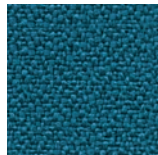
YS159



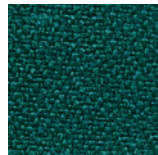
YS035



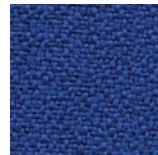
YS021



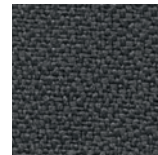
YS160



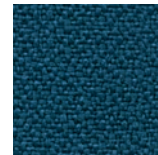
YS161



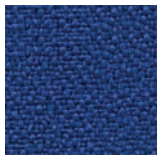
YS082



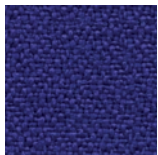
YS141



YS011



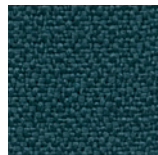
YS005



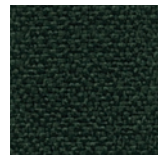
YS162



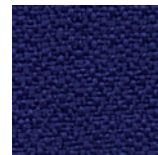
YS086



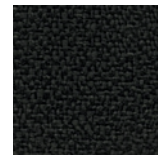
YS047



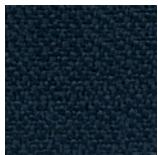
YS045



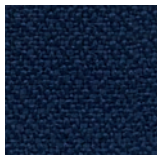
YS100



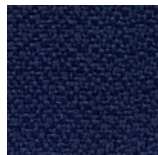
YS046



YS164



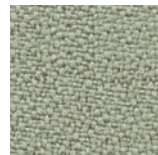
YS026



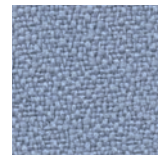
YS024



YS165



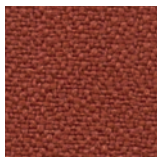
YS166



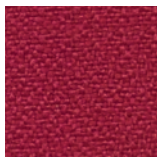
YS173



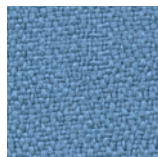
YS072



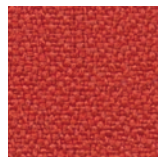
YS076



YS105



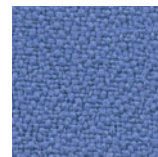
YS167



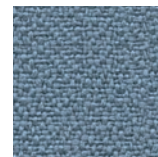
YS168



YS079



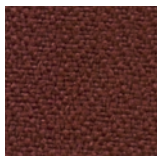
YS169



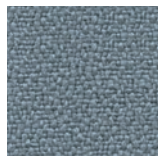
YS170



YS101



YS027



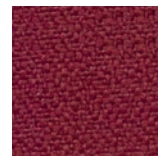
YS094



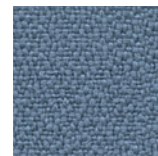
YS081



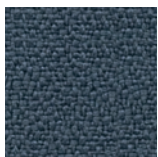
YS102



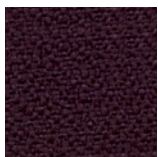
YS106



YS095



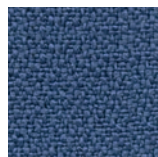
YS171



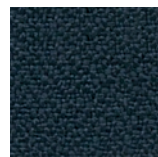
YS030



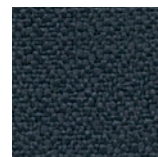
YS136



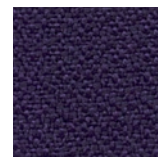
YS004



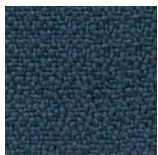
YS172



YS145



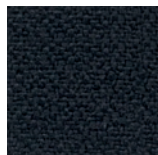
YS084



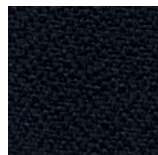
YS083



YS009



YS016



YS144



# Vita

## Categoria D

98.5% Pvc | 1.5% PU

850 ± 10% g/m<sup>2</sup> | Martindale: 100.000 | Xenotest: 6-7 | Flammability: ~~X~~

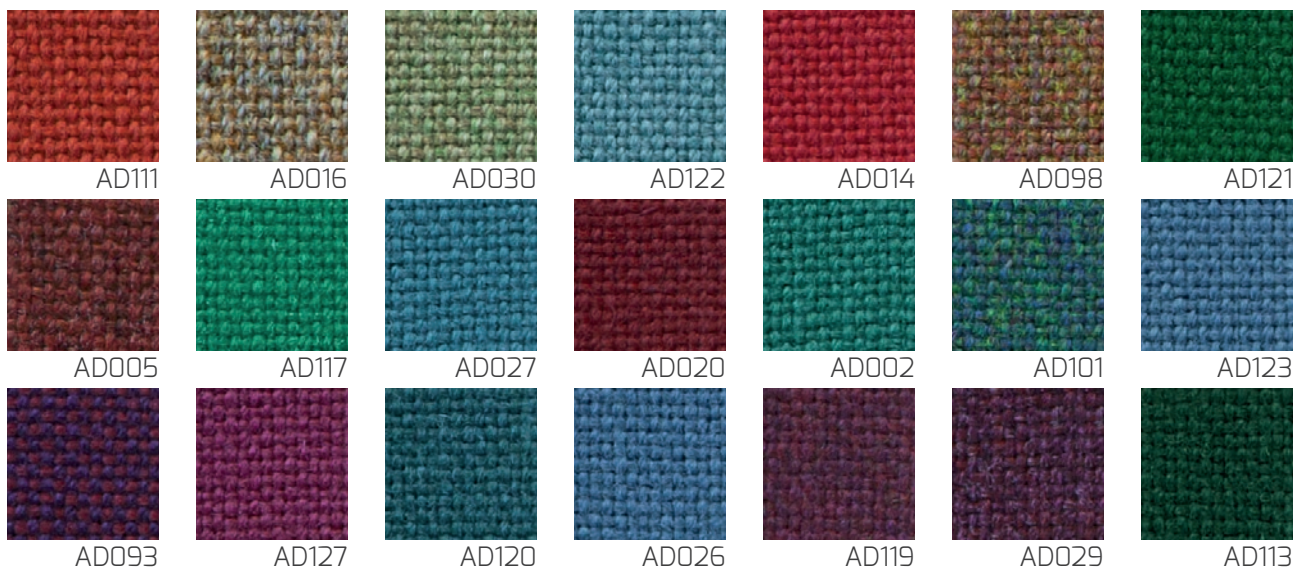


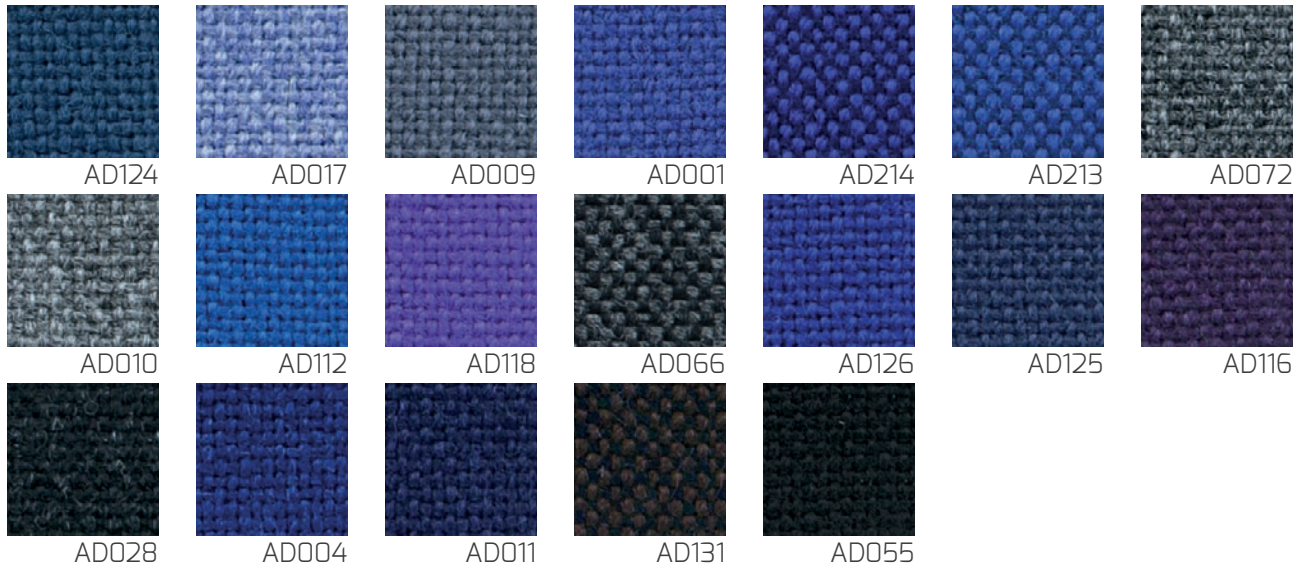
# Advantage

## Categoria D

60% Polypropylene | 30% Wool | 10% Viscose

360 ± 5% g/m<sup>2</sup> | Martindale: 90.000 | Xenotest: 5 | Flammability: ~~X~~



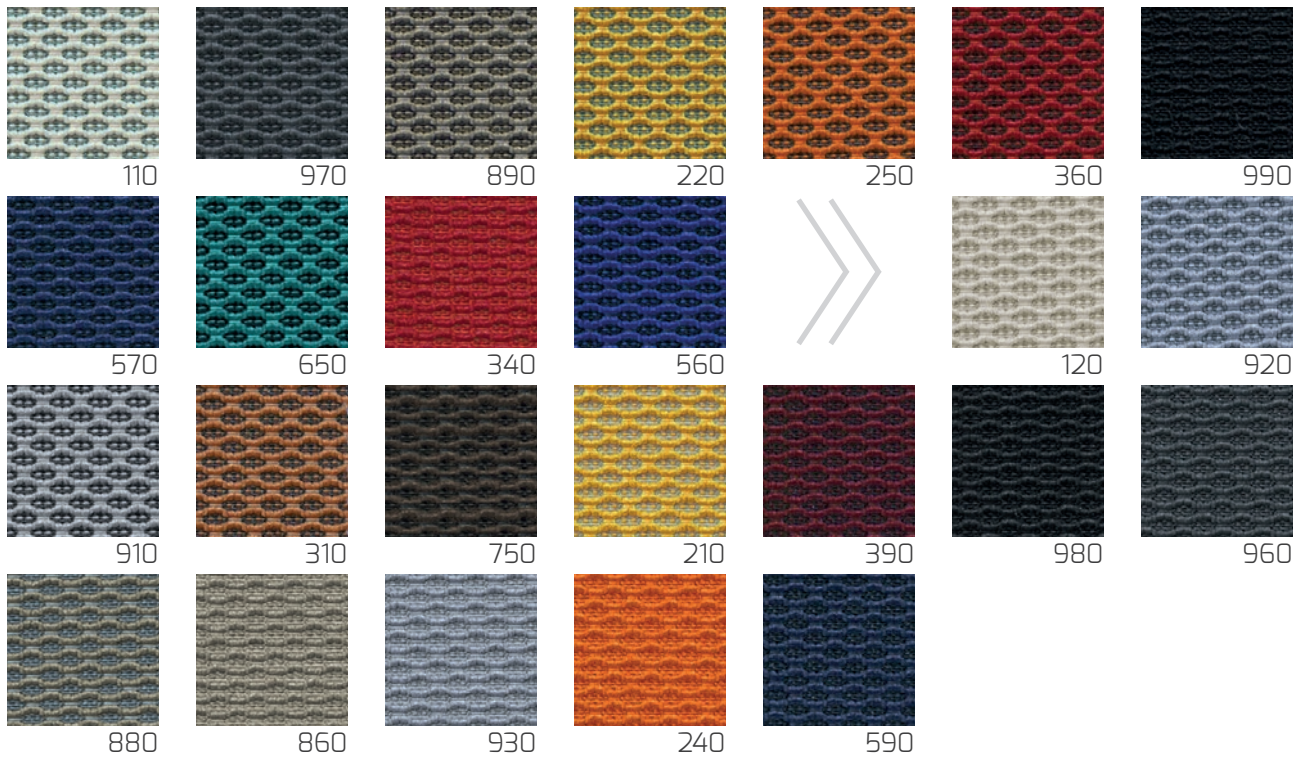


# Climatex

## Categoria E

72% Cradura™ | 16% Virgin Wool | 12% Red. Lenzing FR™

455 ± 3% g/ml | Martindale: 150.000 | Pilling: 4-5 | Xenotest: 6 | Flammability:



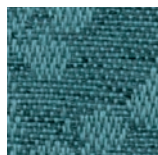


# The Halcyon Collection

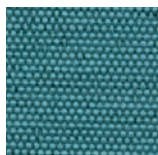
## Categoria E

100% Polyester

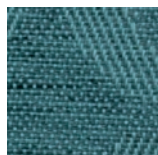
405-490 ± 5% g/m<sup>2</sup> | Martindale: 40.000-100.000 | Xenotest: 6 | Flammability: 



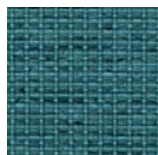
HPB09



HPL09



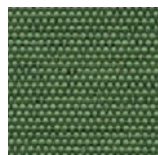
HPA09



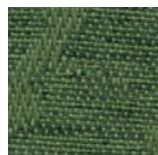
HPC09



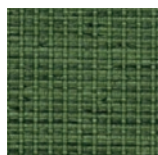
HPP09



HPL08



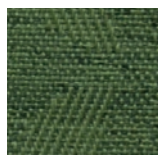
HPB08



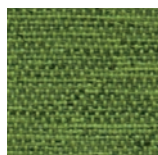
HPC08



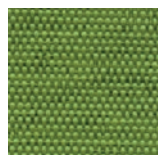
HPP08



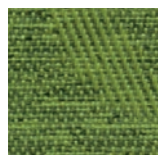
HPA08



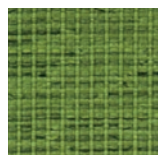
HPB07



HPL07



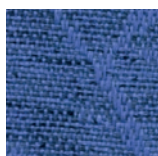
HPA07



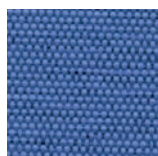
HPC07



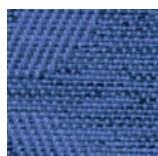
HPP07



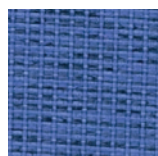
HPB05



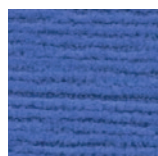
HPL05



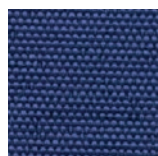
HPA05



HPC05



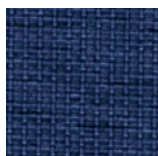
HPP05



HPL04



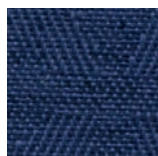
HPB04



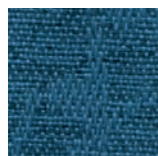
HPC04



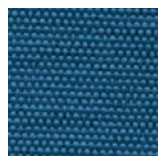
HPP04



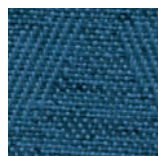
HPA04



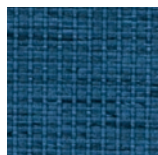
HPB06



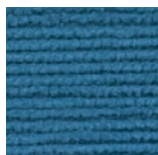
HPL06



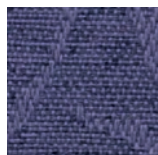
HPA06



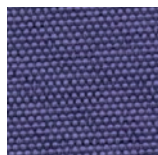
HPC06



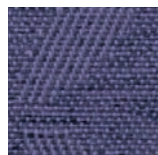
HPP06



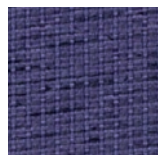
HPB02



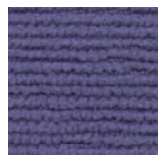
HPL02



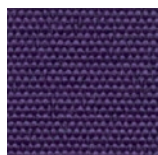
HPA02



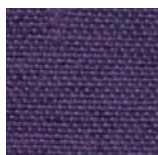
HPC02



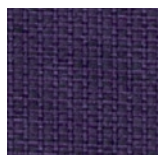
HPP02



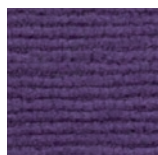
HPL03



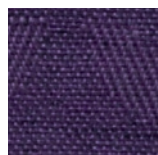
HPB03



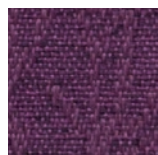
HPC03



HPP03



HPA03



HPB01



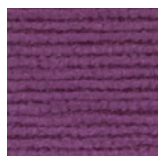
HPL01



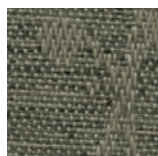
HPA01



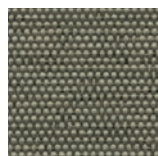
HPC01



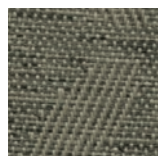
HPP01



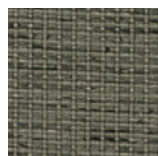
HPB10



HPL10



HPA10



HPC10



HPP10



HPL12



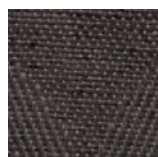
HPB12



HPC12



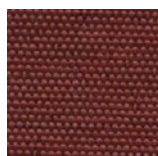
HPP12



HPA12



HPB11



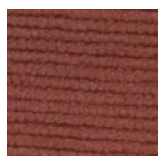
HPL11



HPA11



HPC11



HPP11

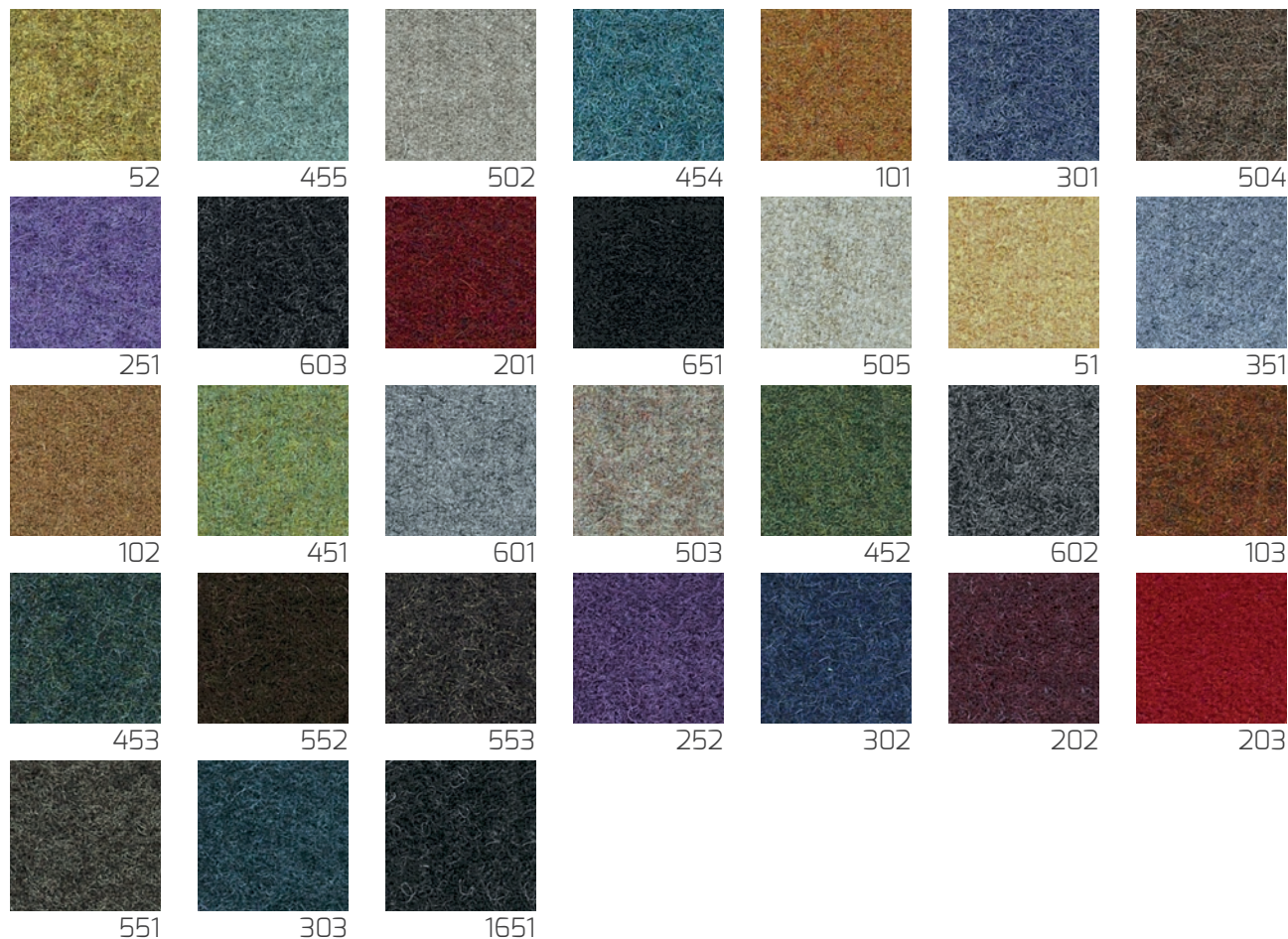


# Fenice

## Categoria E

75% Wool | 25% Polyammide

570 ± 7% g/ml | Martindale: 100.000 | Xenotest: 4 ± 1 | Flammability: ~~X~~



# Ambla

## Categoria E

85% Pvc | 15% Cotton

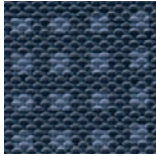
850 ± 10% g/m<sup>2</sup> | Martindale: 300.000 | Xenotest: 6-7 | Flammability: ~~X~~

### MUNRO

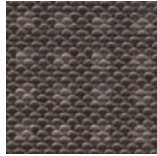




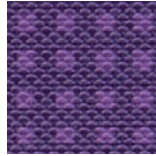
**BERKSHIRE**



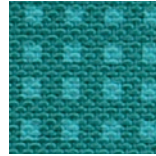
Aston



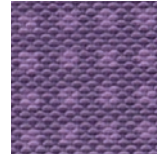
Aldworth



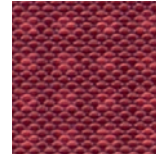
Burghfield



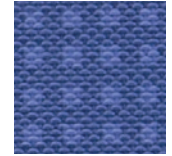
Theale



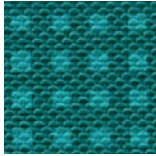
Padworth



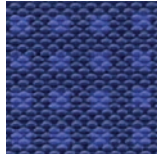
Purley



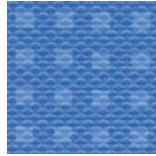
Newbury



Donnington



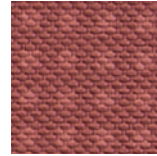
Caversham



Boxford

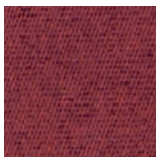


Fawley

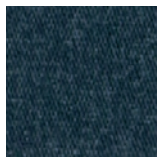


Chalvey

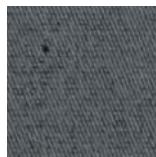
**WILD HEATHER**



Lewis



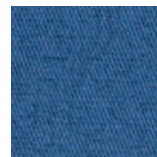
Ninian



Spey



Islay



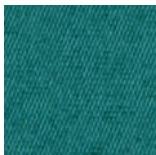
Skye



Oban



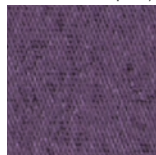
Lomond



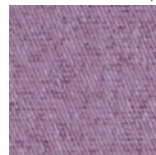
Brechin



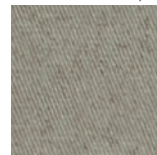
Fife



Daviot



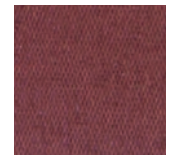
Kerry



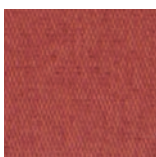
Bute



Harris



Clova



Barra



Clyde

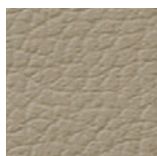


Nevis

**EXMOOR**



Ashwick



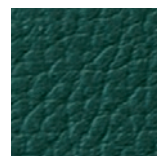
Upton



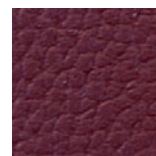
Barbrook



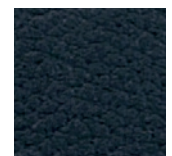
Allerford



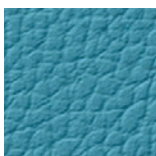
Hawkrigde



Cheriton



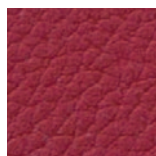
Exton



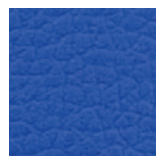
Lynton



Bratton

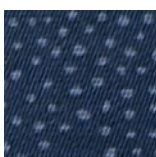


Horner

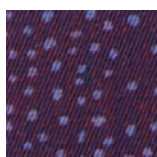


Elworthy

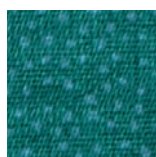
**BOWLAND**



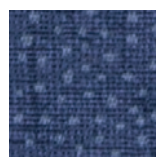
Lune



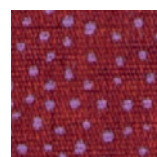
Roeburn



Settle



Bentham



Bleasdale

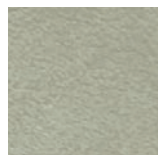
WOODLAND



Ash



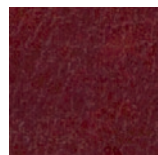
Fern



Yew



Spruce



Cherry



Mallow

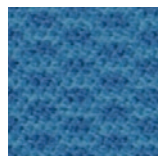
YORK WEAVE



Tanner



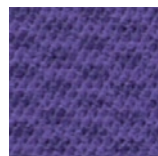
Aldwark



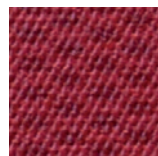
Fishergate



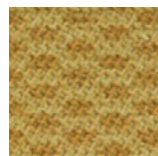
Clifford



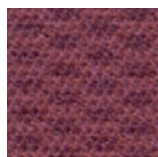
Grape



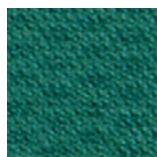
Priory



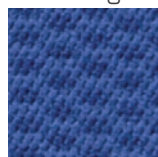
Piccadilly



Coppergate



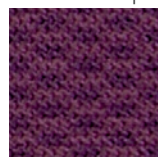
Toft Green



Minster



Deangate

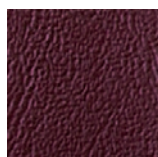


Trinity



Foss Bank

NEW RICHMOND IN COLOUR



Rosehip



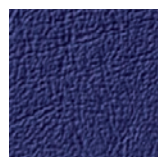
Lupin



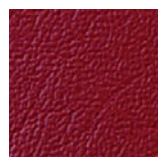
Bluebell



Cornflower



Blueberry



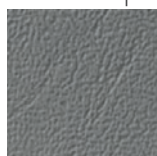
Poppy



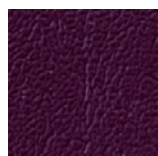
Blackcurrant



Black



Flake



Damson



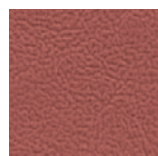
Apricot



Apple



Snow White



Peach



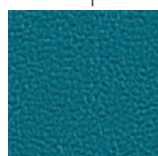
Lime



Sunflower



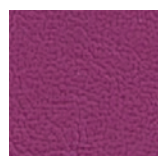
Iris



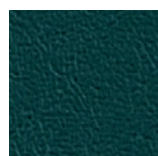
Orchid



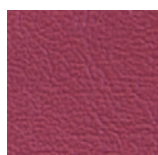
Mango



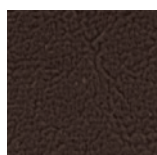
Blossom



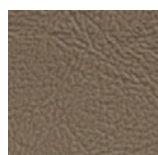
Leaf Green



Fire Cracker



Chocolate



Truffle



Mushroom



# Blazer

## Categoria F

100% Virgin Wool

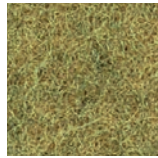
460 ± 5% g/m<sup>2</sup> | Martindale: 50.000 | Xenotest: 5 | Flammability: ~~X~~



CUZ47



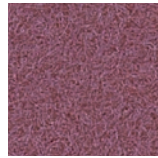
CUZ82



CUZ58



CUZ14



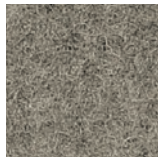
CUZ84



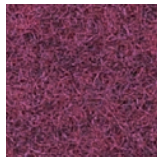
CUZ83



CUZ85



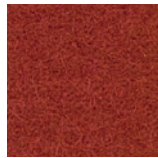
CUZ86



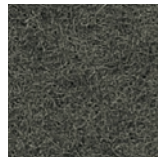
CUZ87



CUZ88



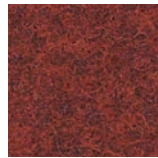
CUZ39



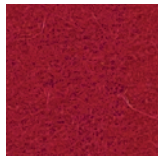
CUZ31



CUZ89



CUZ90



CUZ18



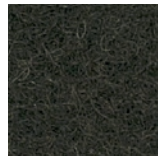
CUZ67



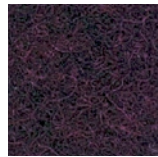
CUZ21



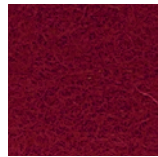
CUZ63



CUZ1A



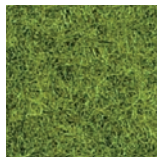
CUZ1B



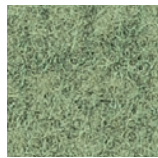
CUZ13



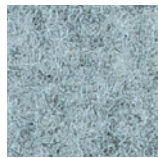
CUZ66



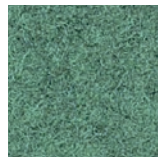
CUZ1F



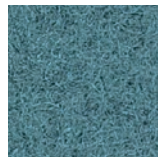
CUZ1D



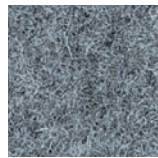
CUZ28



CUZ1C



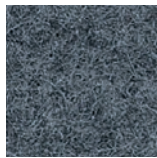
CUZ33



CUZ1E



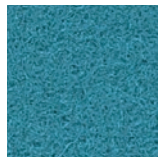
CUZ1L



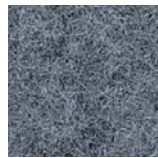
CUZ1J



CUZ53



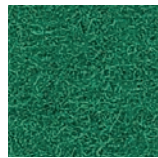
CUZ02



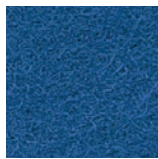
CUZ1G



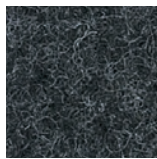
CUZ1K



CUZ1H



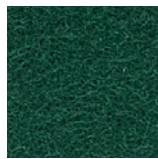
CUZ26



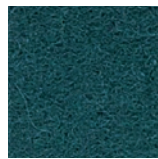
CUZ30



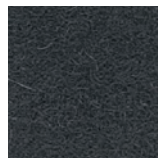
CUZ1M



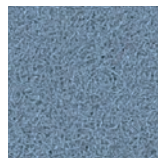
CUZ1N



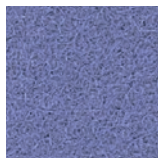
CUZ1P



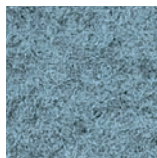
CUZ12



CUZ1Q



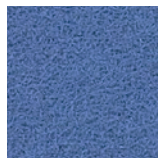
CUZ1T



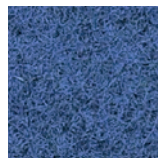
CUZ1R



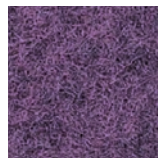
CUZ1S



CUZ1V



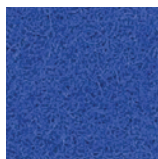
CUZ1W



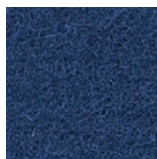
CUZ1X



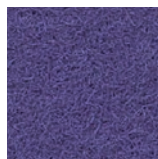
CUZ1U



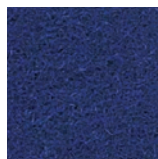
CUZ24



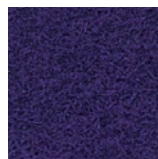
CUZ1Y



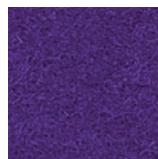
CUZ1Z



CUZ09



CUZ27



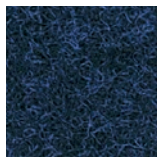
CUZ2A



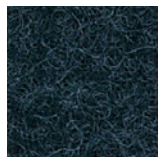
CUZ46



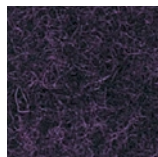
CUZ08



CUZ62



CUZ35



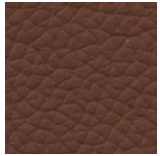
CUZ32

# Pelle plus

## Categoria P

100% Leather - Cuir - Leder

0.9 - 1.1 mm | Rubbing: 5 | Xenotest: 4



178



191



187



189



180



165



159



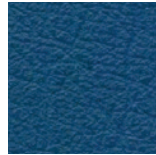
160



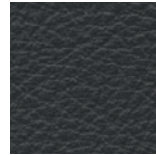
188



185



199



195



176



174



175

# Pelle

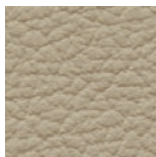
## Categoria P1

100% Leather - Cuir - Leder

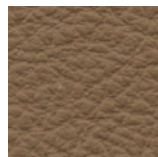
1.2 - 1.3 mm | Rubbing: 5 | Xenotest: 4



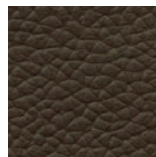
191



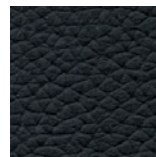
180



188



174



176

# Pelle mix

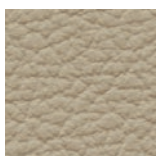
## Categoria M2

100% Leather + 83% Pvc | 17% Rayon / Pes

Pelle | Serie 600



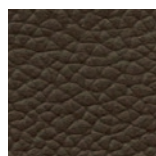
191 / 261



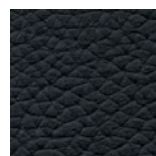
180 / 259



188 / 265



174 / 267



176 / 260



# Plastica

## CORTINA



012



016



014



017

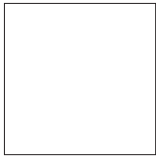


013



011

## LAMIA



027



024



026



025



021

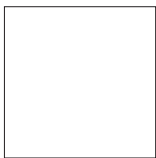


023

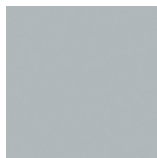


022

## ARCADE



037



034



036



032



038



031

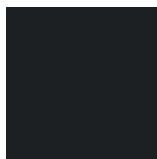


033

## KEY-OK



044



046

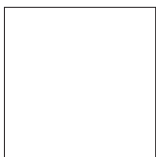


045

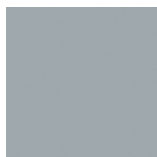


042

## ILIKE



057



054



056



055



051

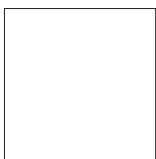


053



052

## STAKY | STRUTTURA-BRACCIOLI | STRUCTURE-ARMRESTS | STRUCTURE-ACCOUDOIRS | STRUKTUR-ARMLEHNEN



B

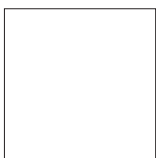


GR



N

## STAKY | SEDILE-SCHIENALE | SEAT-BACKREST | ASSISE-DOSSIER | SITZ-RÜCKENLEHNEN



067



064



066

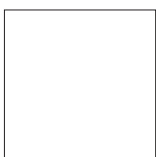


062

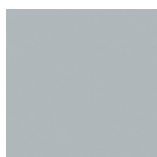


061

## SPOT



B



G



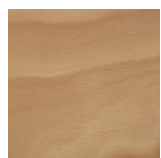
GS



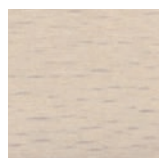
N

# Legno

Colori standard | Standard colours | Couleurs standard | Standard-Farben



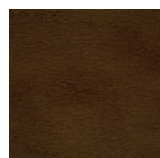
FG Faggio



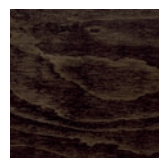
AV Acero



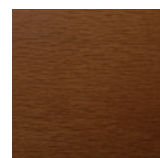
MG Mogano



NS Noce



WG Wengè



CS Ciliegio selvatico

## PIANI TAVOLI EOS



GG



BP



B

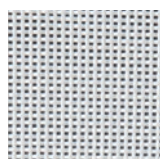


N

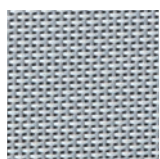
# Rete

Categorie RE e RT

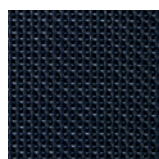
## ORIGAMI RE - RX



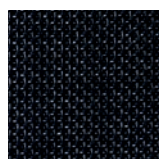
Bianco 424



Grigio 423

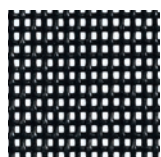


Nero 421

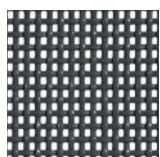


Antracite 422

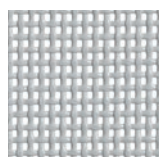
## COMETA



Nero 418



Grigio 420

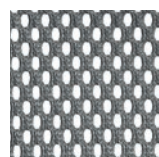


Bianco 419



Bianco

## LAILA

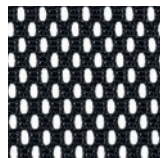


Grigio 416

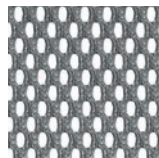


Nero 415

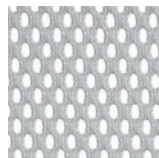
## GUMMY RE, SPRINT RE, EGOLUX, EGONOMIC, KEY OK, WIKI RE



Nero 405



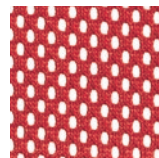
Grigio 407



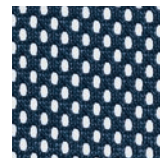
Bianco 406



Beige 408



Rosso 404



Blu 409

Colori standard » Colori non a magazzino. Rivestimenti e colori indicativi.

Standard colours in stock » Additional non stock colours. All colours and finishings are indicative.

Couleurs standard en stock » Couleurs additionnelles pas en stock. Toutes couleurs et finitions sont indicatives.

Standardfarben auf Lager » Zusätzliche Farben nicht auf Lager. Alle Farben und Ausführungen sind indikativ.







Leyform Srl

Via Pertini, 1  
31014 Colle Umberto  
Treviso - Italy

Tel +39 0438 430 050  
Fax +39 0438 430 487  
[www.leyform.com](http://www.leyform.com)  
[info@leyform.com](mailto:info@leyform.com)